

An aerial photograph of New Bern, North Carolina, showing a wide river, a dam, and a town. The image is in a sepia tone. A semi-transparent white box is overlaid on the middle of the image, containing the title and subtitle.

AFFORDABLE AND RESILIENT HOUSING FOR NEW BERN

Affordable Housing + Sustainable Communities Initiative | School of Architecture | NC State University

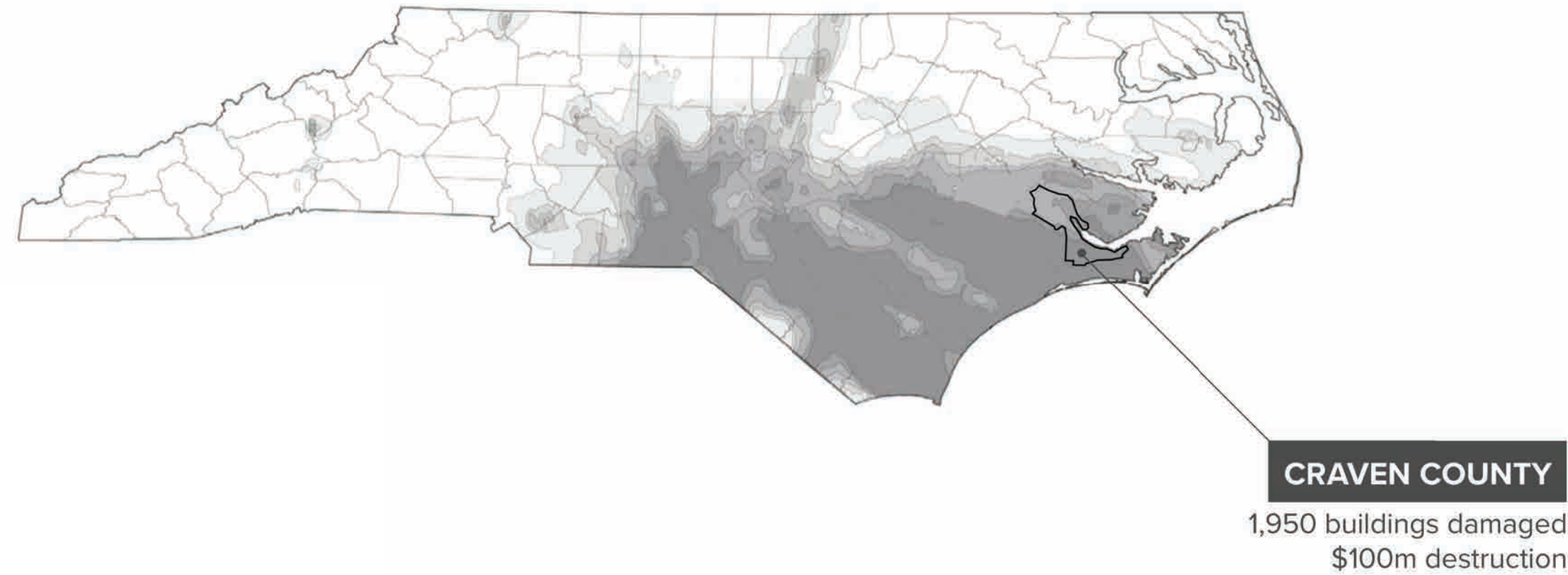


Core+

Gayatri Ganesh

Disaster Declaration

Hurricane Florence



October 2018 [one month after debris]:

*"families [in New Bern] with damaged homes and unlivable apartments **hadn't heard anything from FEMA about temporary housing.**"*

-The Atlantic, 10/04/18

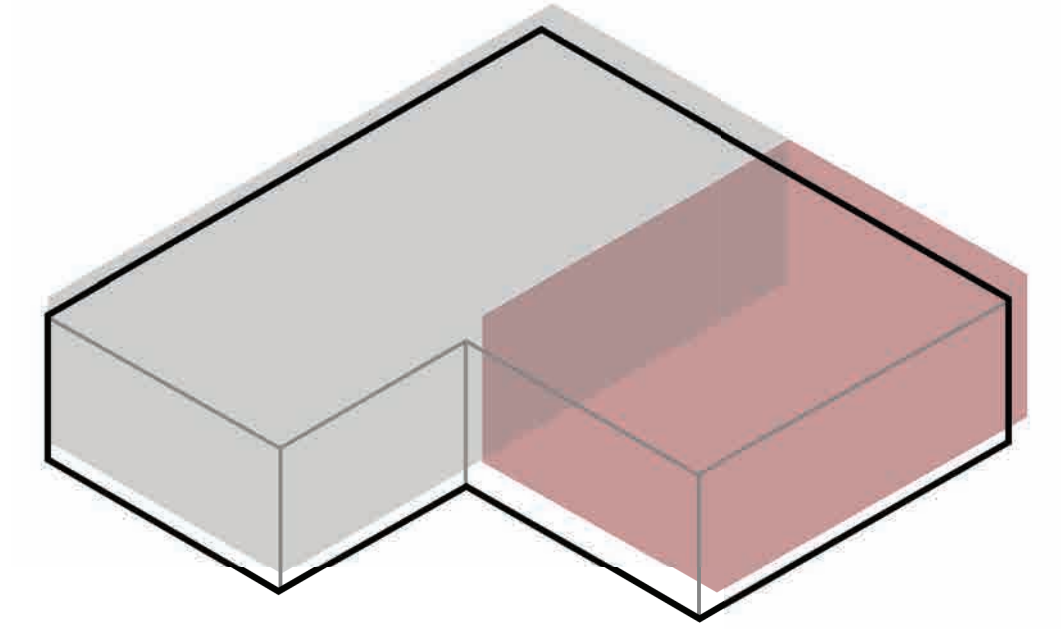
December 2021 [three years after debris]:

Florence-damaged buildings at Trent Court are **still awaiting final FEMA approval**

-Sun Journal, 12/13/21

Core+

Project Statement



Employing a prototypical system of **rapid deployment post-disaster** wherein affected residents are immediately provided with basic core units, and able to later **custom expand** based off preference.

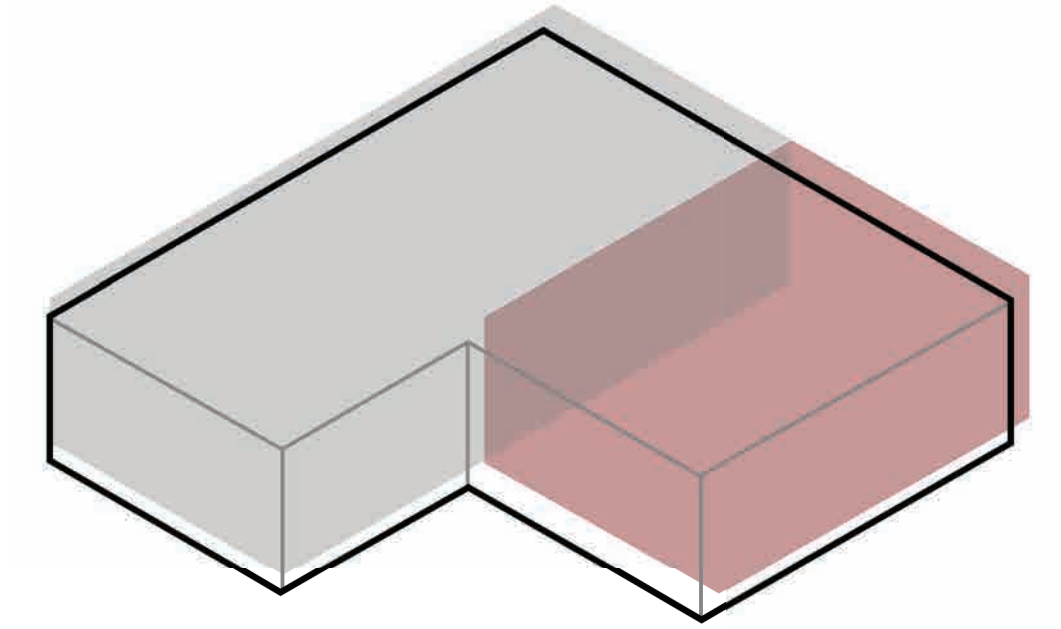
To avoid relocation, cores are built in place of the destroyed home and expansions **rehabilitate destroyed home pieces**, if possible.*

The model is designed so residents can continue to **reside in the self-sustaining core** while expansion construction is ongoing.

*if not, the expansion is started afresh instead of leveraging destroyed home materials

Core+

Design Overview



Low maintenance

Prototypical rapid deployment
Not site specific

Prefabricated Core

Off-site

Reduces specialized labor (greater volunteer ability + participation)
Decreases construction time/cost

Resident-determined/community engagement

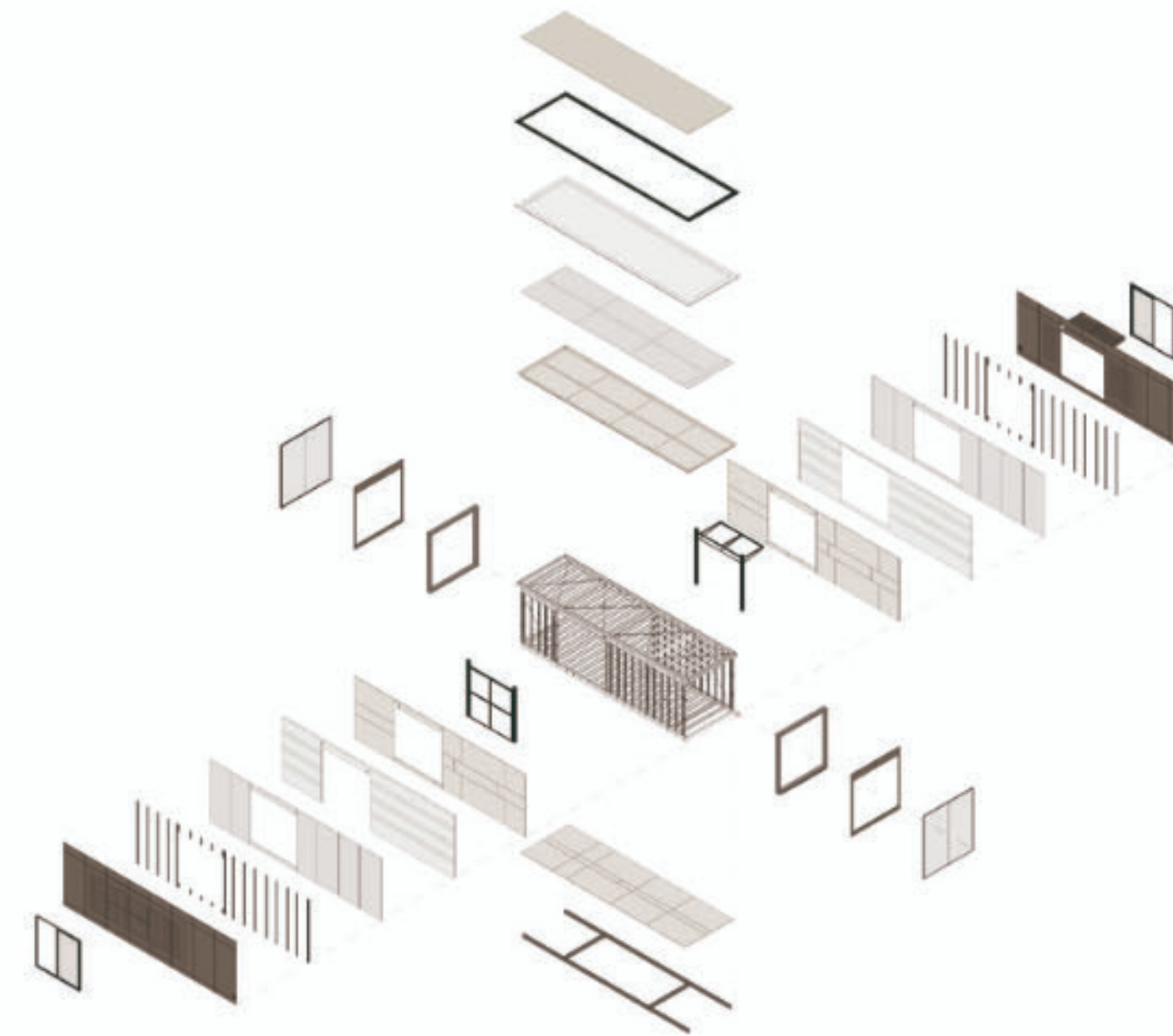
Pre-designated 'packets' wherein residents can determine from 'catalog' for expansion
(bolt-on units)

Core+

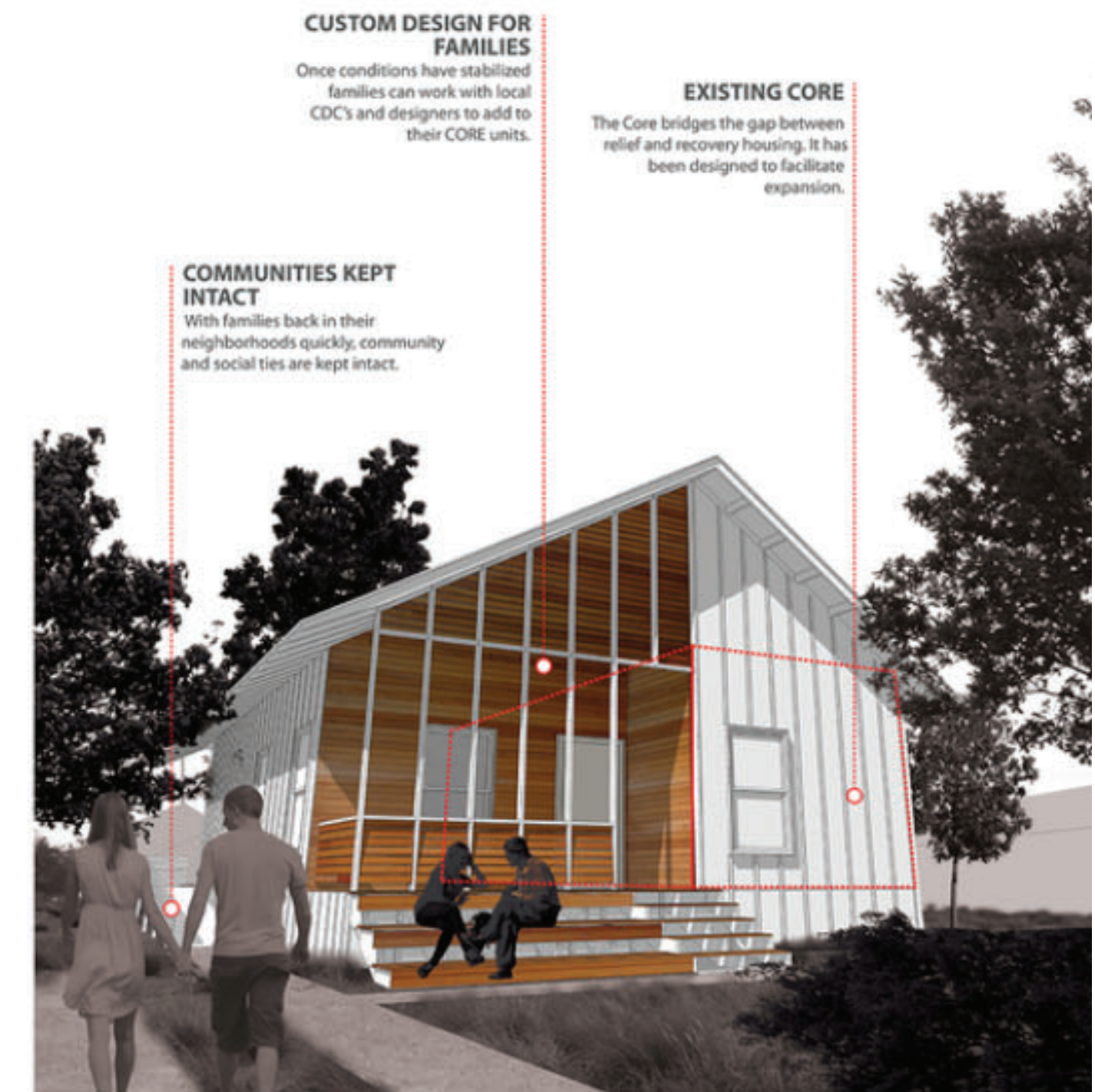
Delivery, Assembly, Implementation Precedents



Core Disaster Recovery
post Central Java Earthquake in Indonesia
(2006)

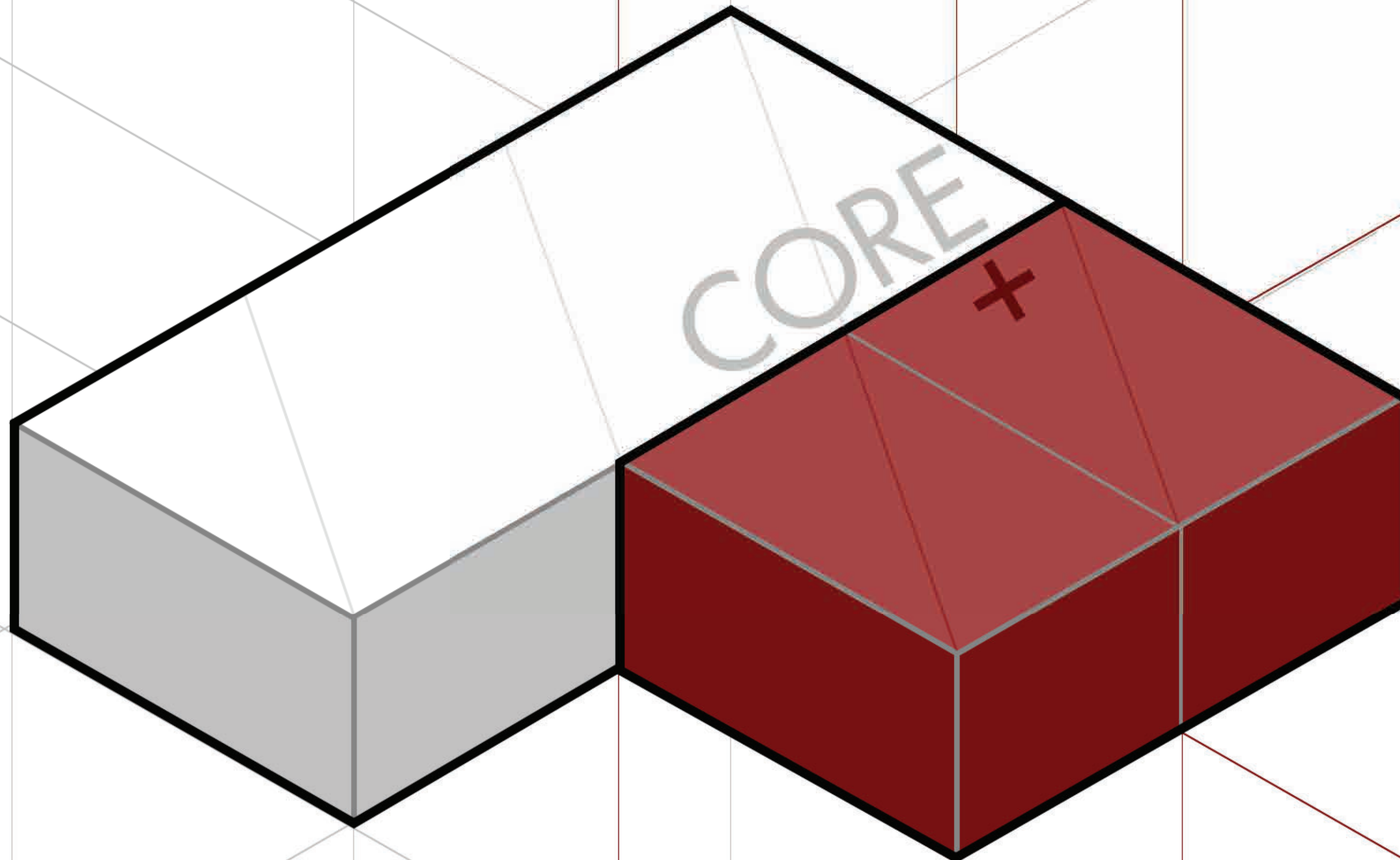


MINIMOD_MAPA
Rapid prefab delivery
(2013)

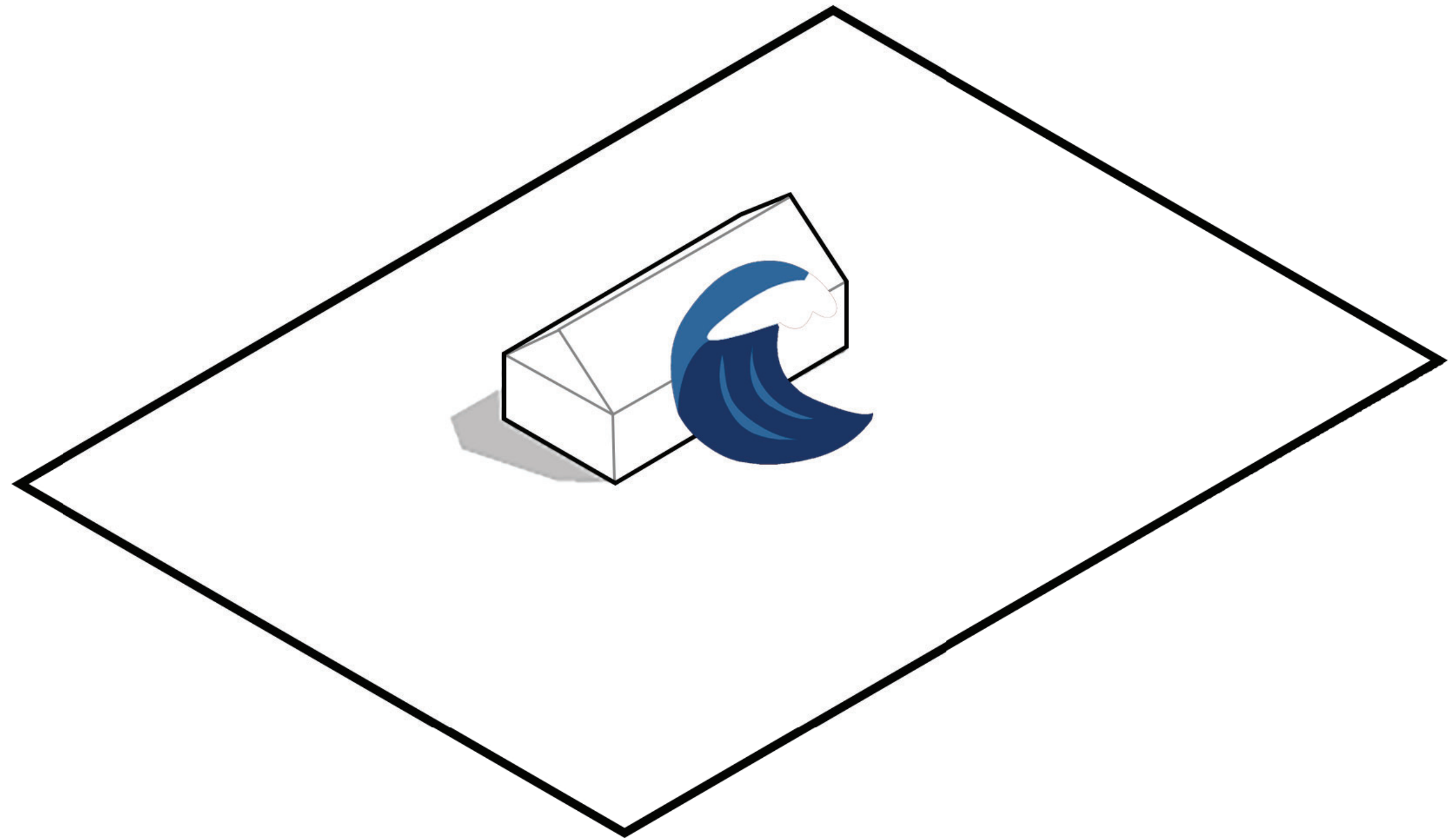


RAPIDO_bc Workshop
post Hurricane Dolly in Texas
(2008)

Core+
Geometry

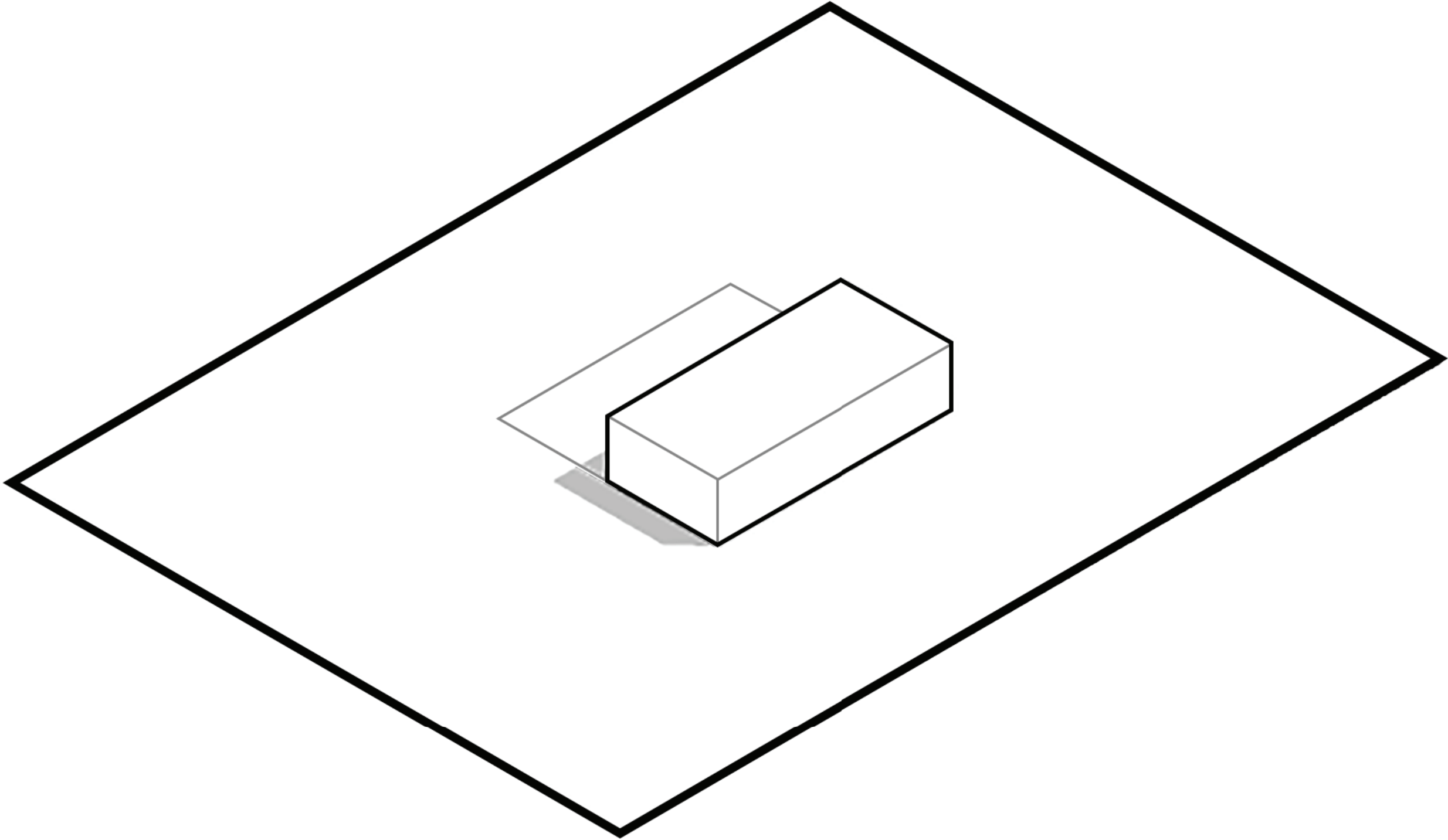


DESTRUCTION



DESTRUCTION

TRANSITIONAL



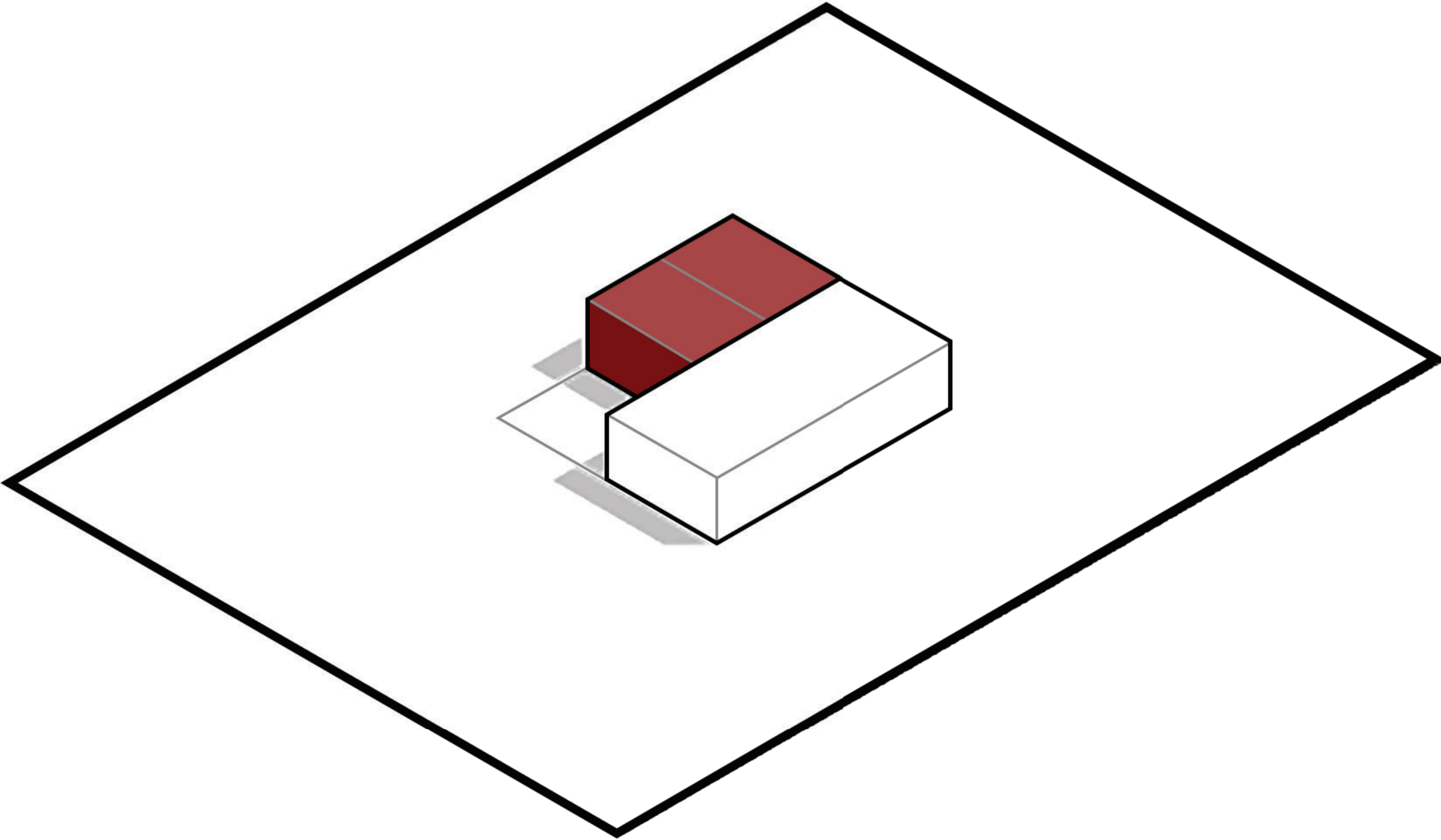
Core+

System

DESTRUCTION

TRANSITIONAL

PERMANENT



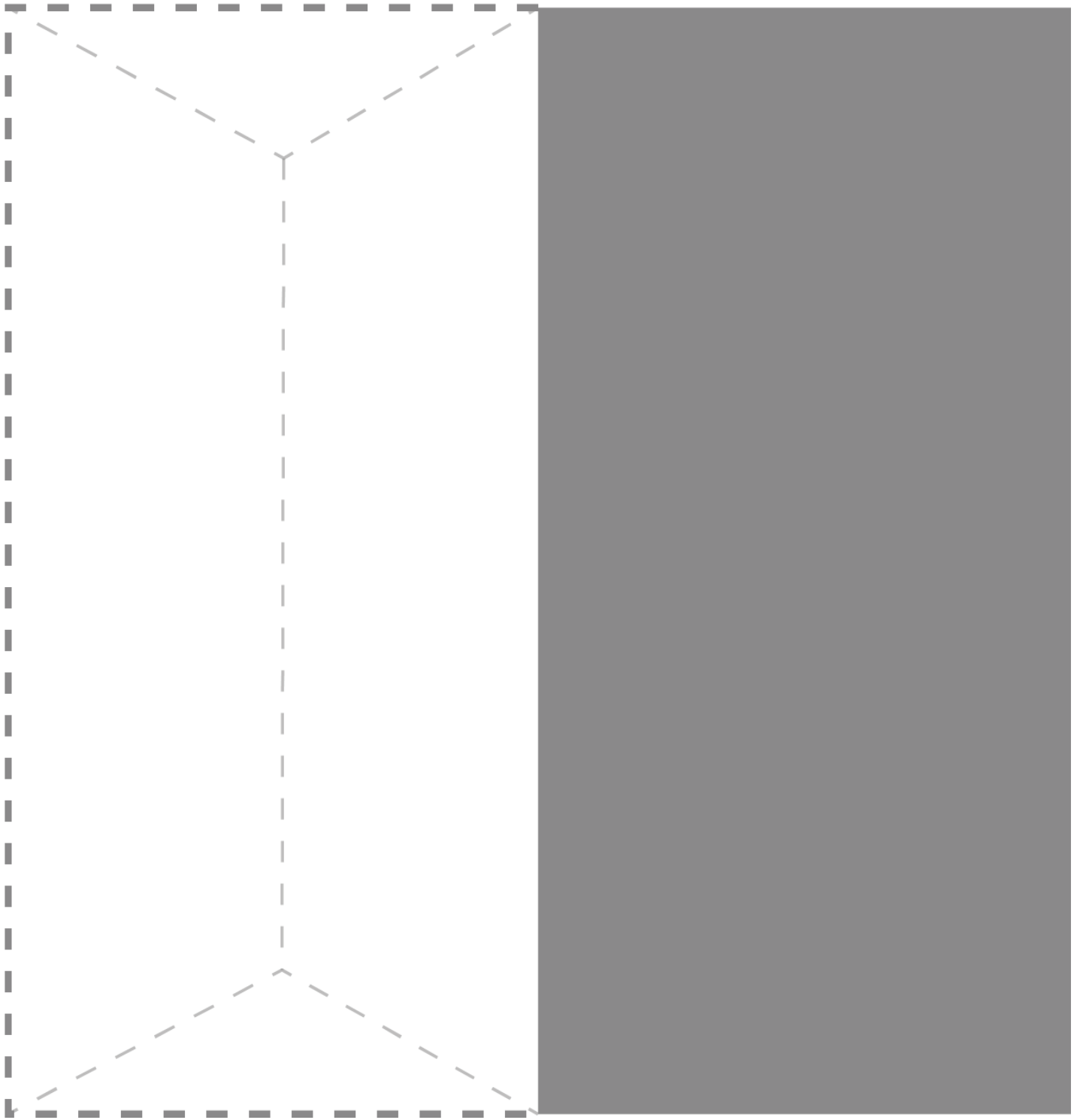
Core+

Assembly + Delivery

DESTRUCTION



CORE
6 WEEKS



Core+

Assembly + Delivery

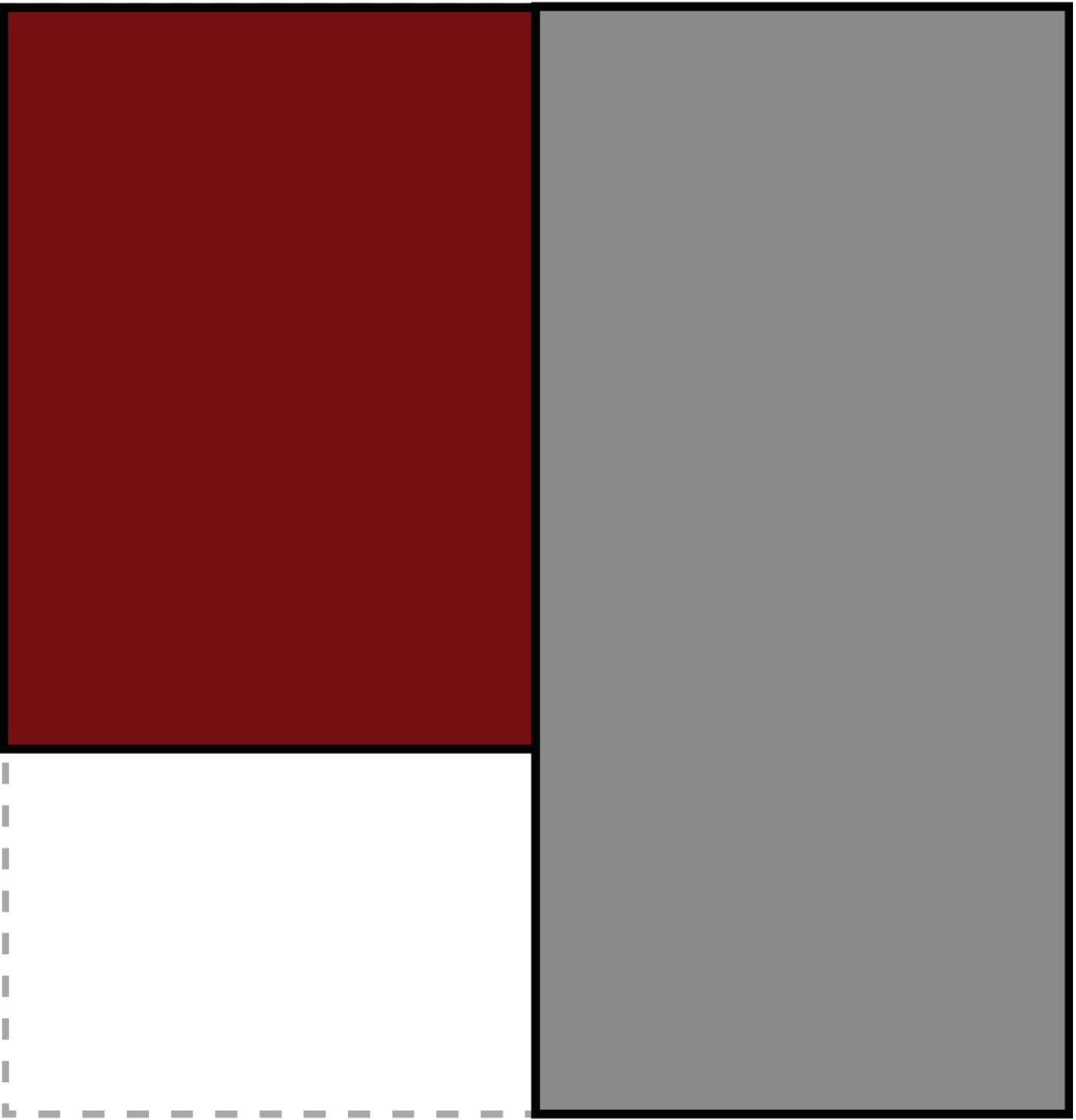
DESTRUCTION



CORE
6 WEEKS

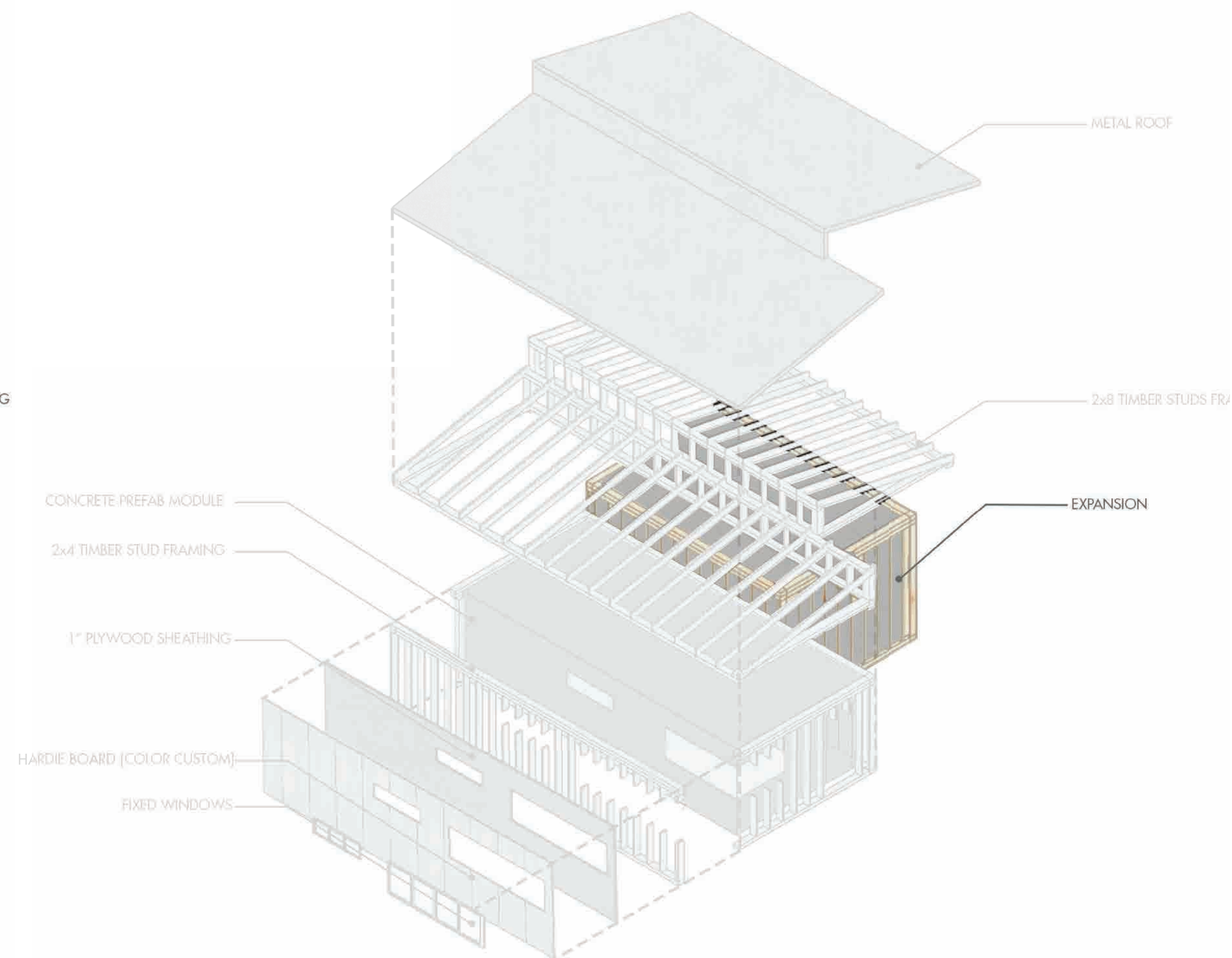
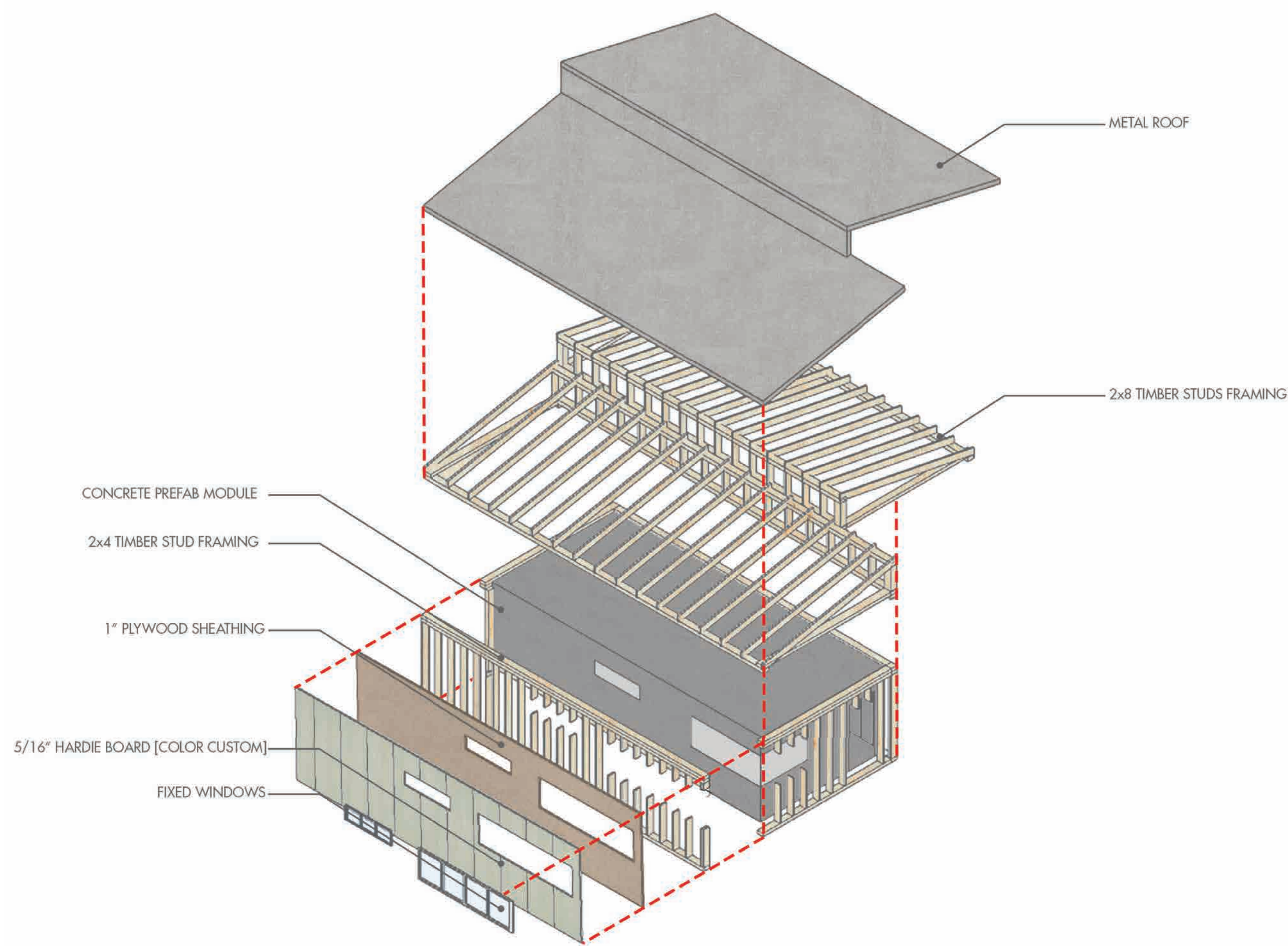


+
3 MONTHS~

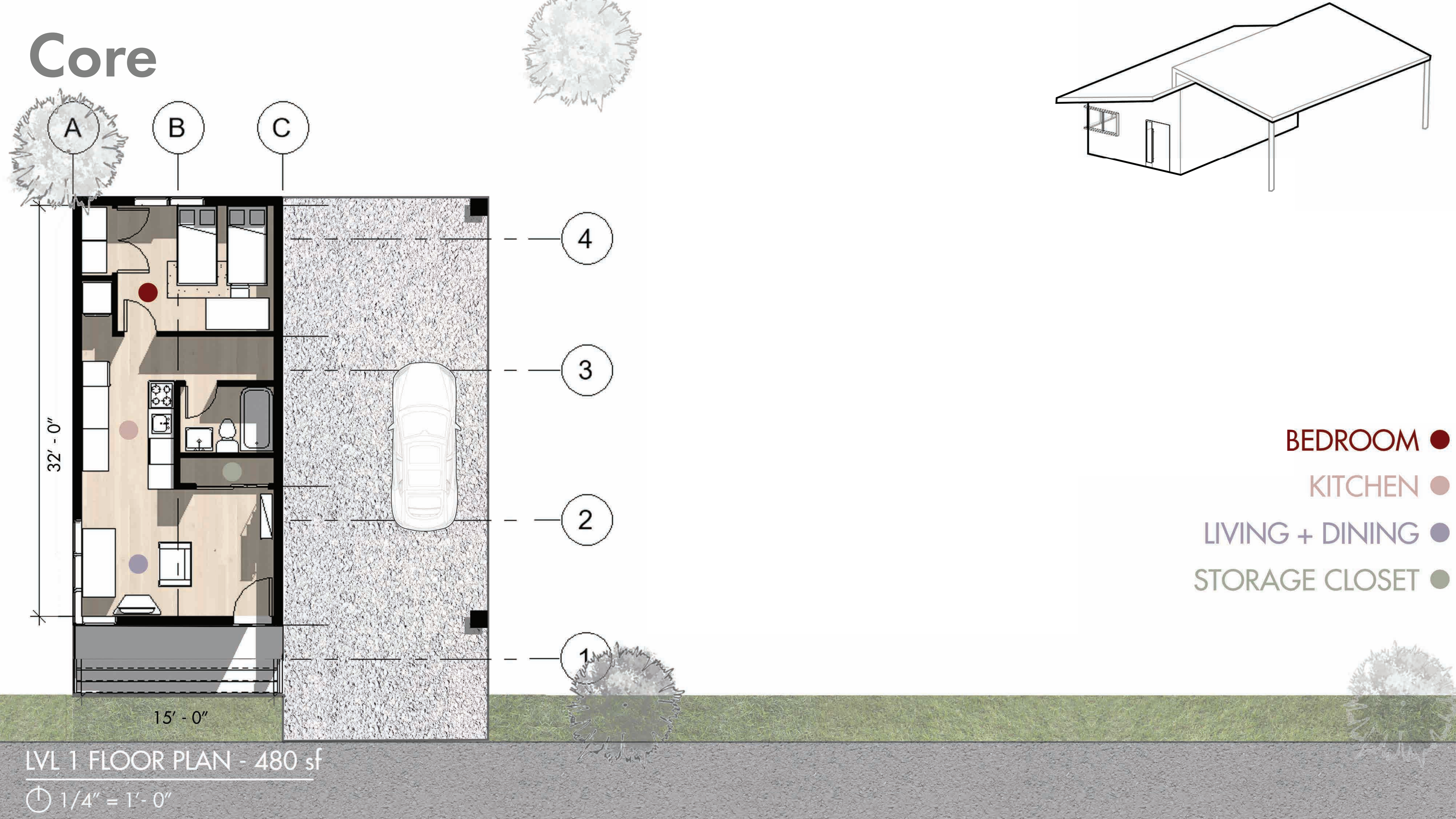


Core+

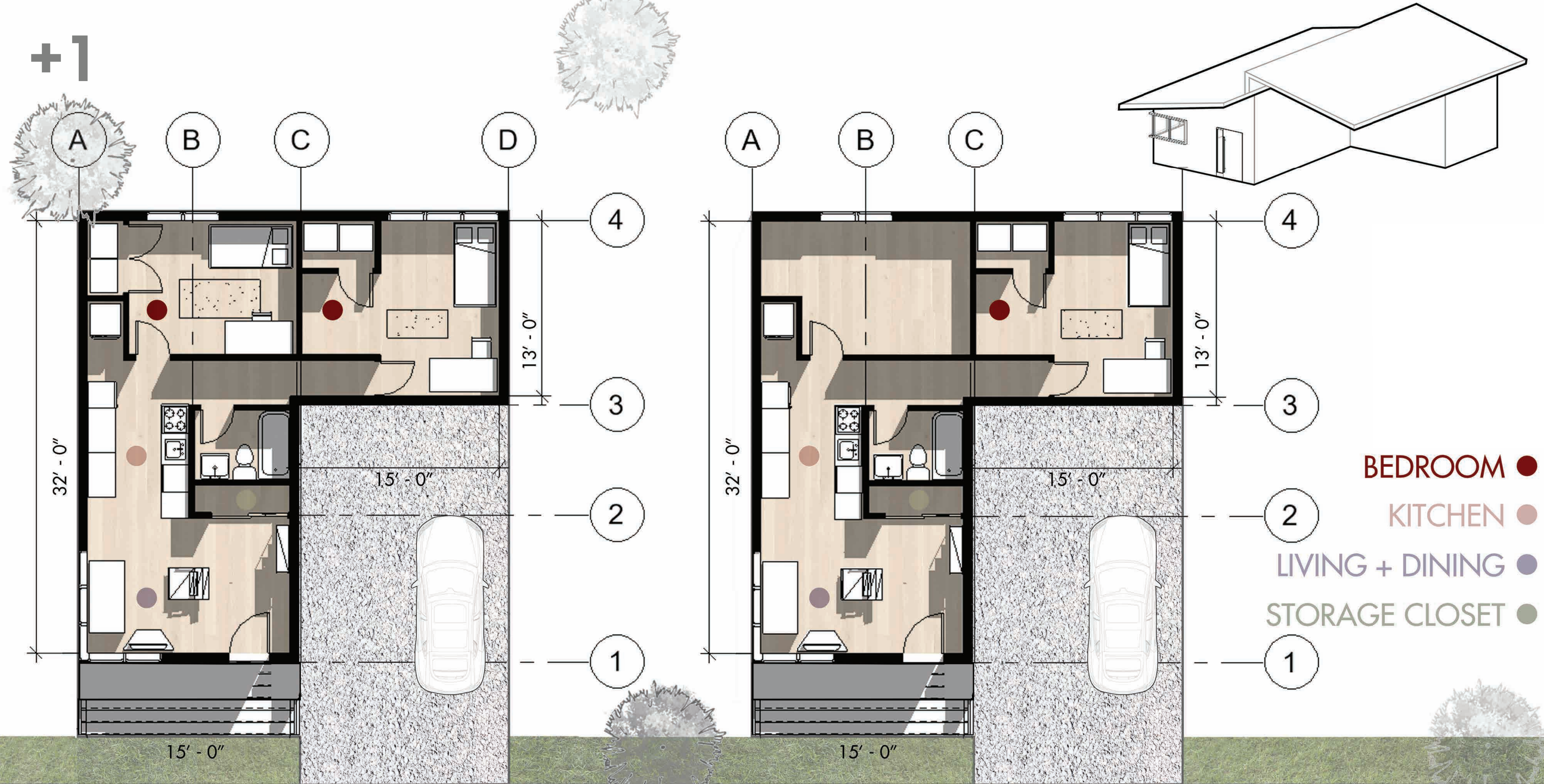
Assembly + Delivery



Core



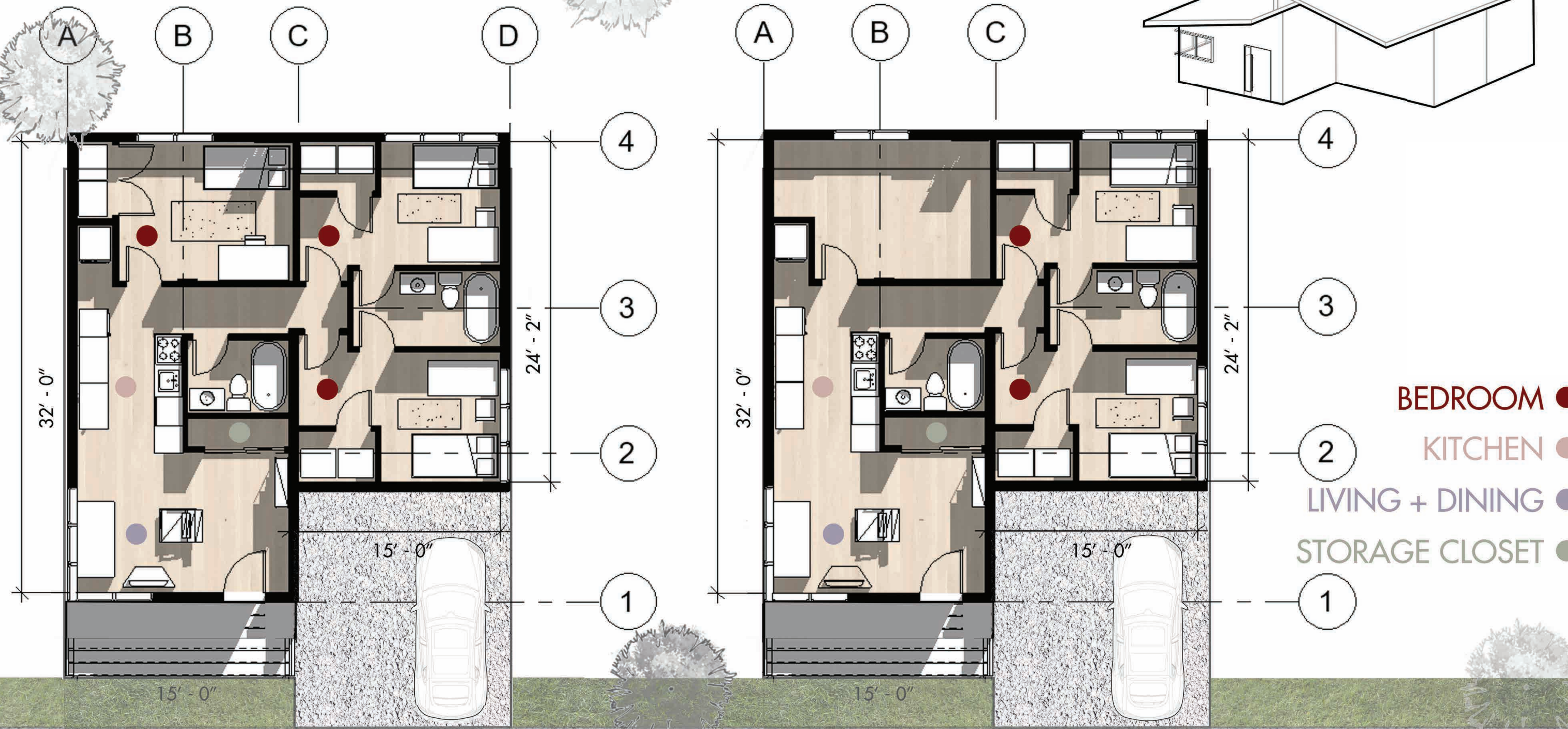
+1



LVL 1 FLOOR PLAN - 675 sf

1/4" = 1'-0"

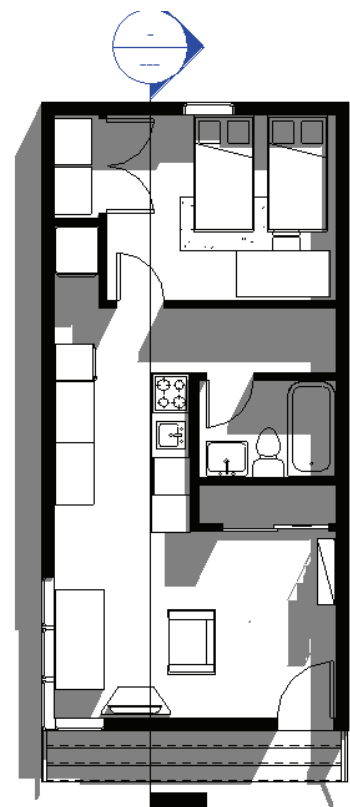
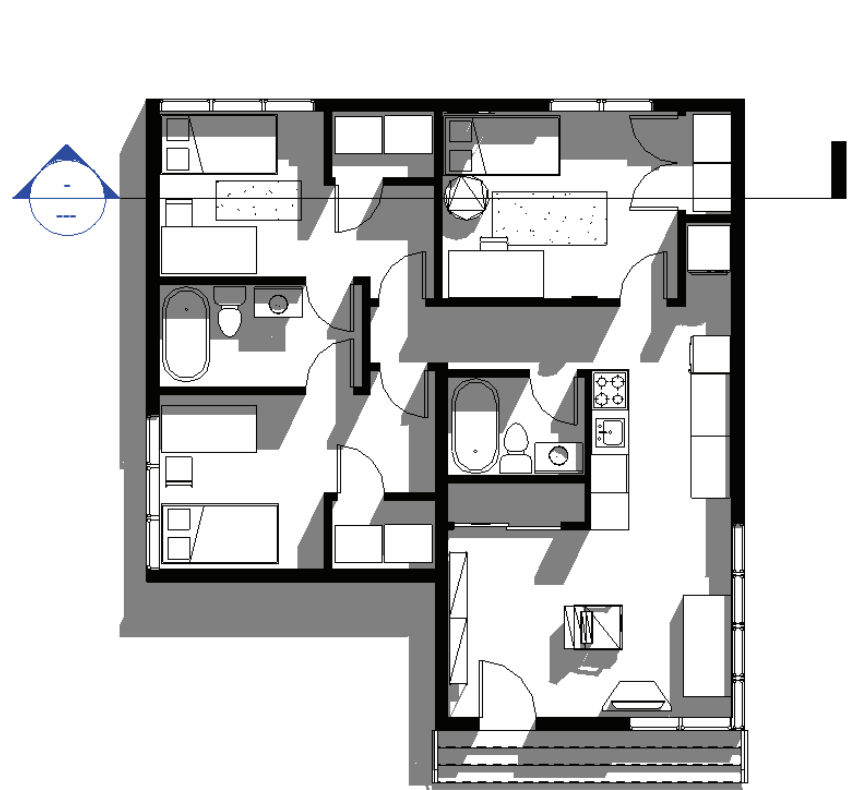
+2



LVL 1 FLOOR PLAN - 850 sf

1/4" = 1'-0"

Building Sections



NORTH CUT

0 2.5 5 7.5 10 12.5

EAST CUT

0 2.5 5 7.5 10 12.5

Material Palette

EXTERIOR WALL FINISHES

WOOD-STAINED HARDIE BOARD VERTICAL SIDING

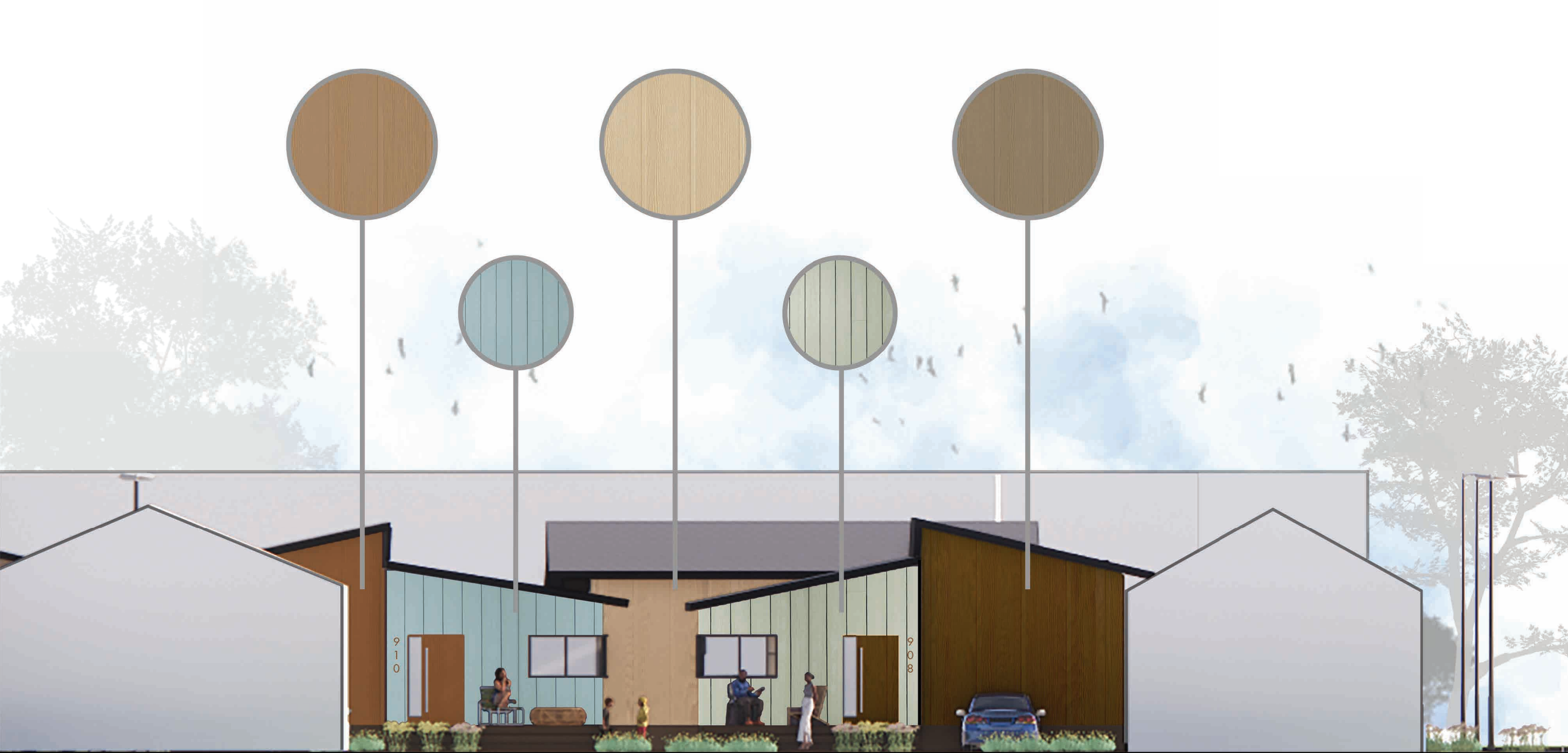


COLOR-PRIMED HARDIE BOARD LAP SIDING



RECOMMENDED COMBOS





WEST ELEVATION

Sustainability



METAL ROOF
(100% RECYCLABLE,
GOOD FOR
RAINWATER
COLLECTION)

COMMUNITY GARDEN
(NON-INVASIVE AND GROUT RESISTANT PLANTINGS)

EAST-WEST ORIENTATION
(NATURAL DAYLIGHTING)

DAYLIGHTING FROM
COOL NORTH SIDE
(APETURES)

ROOF-HARVESTED
RAINWATER IRRIGATES
GARDEN

SHADING FROM
SOUTH SIDE
(+SCREEN FEATURE ON PATIO)

OPEN AIR CIRCULATION
(EFFICIENT FLOOR PLAN)

PREFABRICATED MODULE
(LOCALLY SOURCED MATERIALS,
RAPID DEPLOYMENT,
LOWER SQUARE FOOTAGE,
ONE STORY)

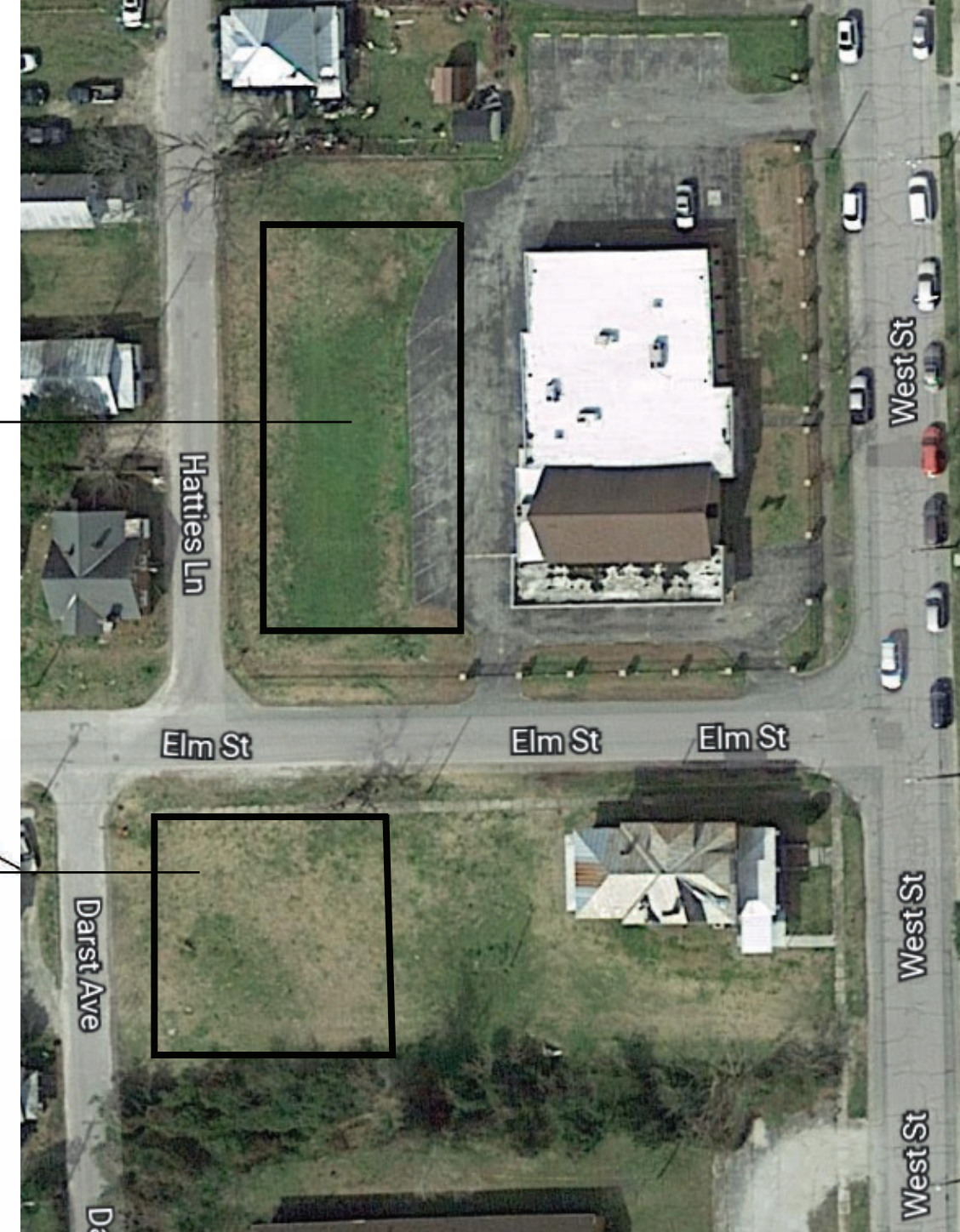
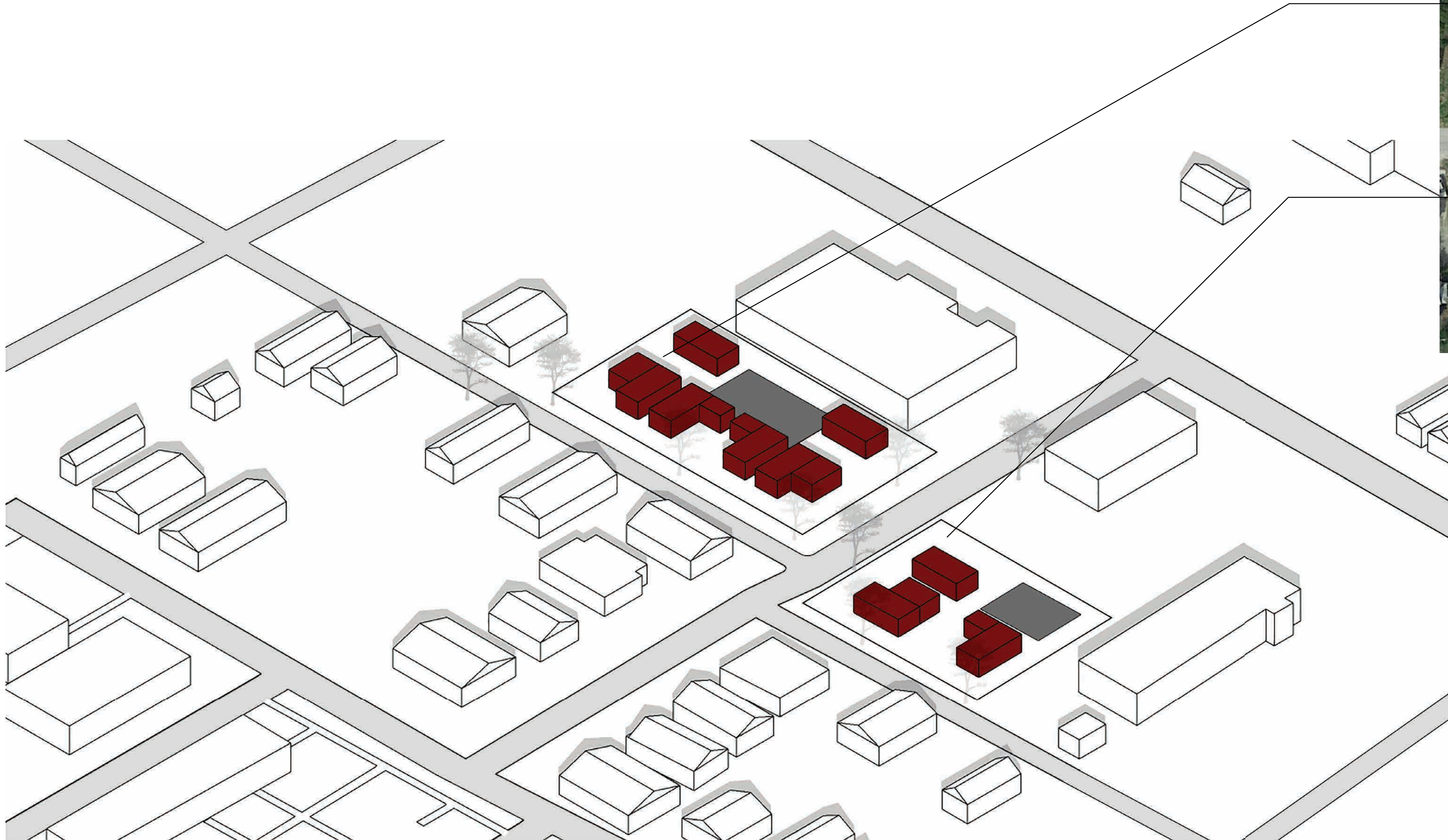
PERVIOUS
PAVEMENT

Scattered Sites



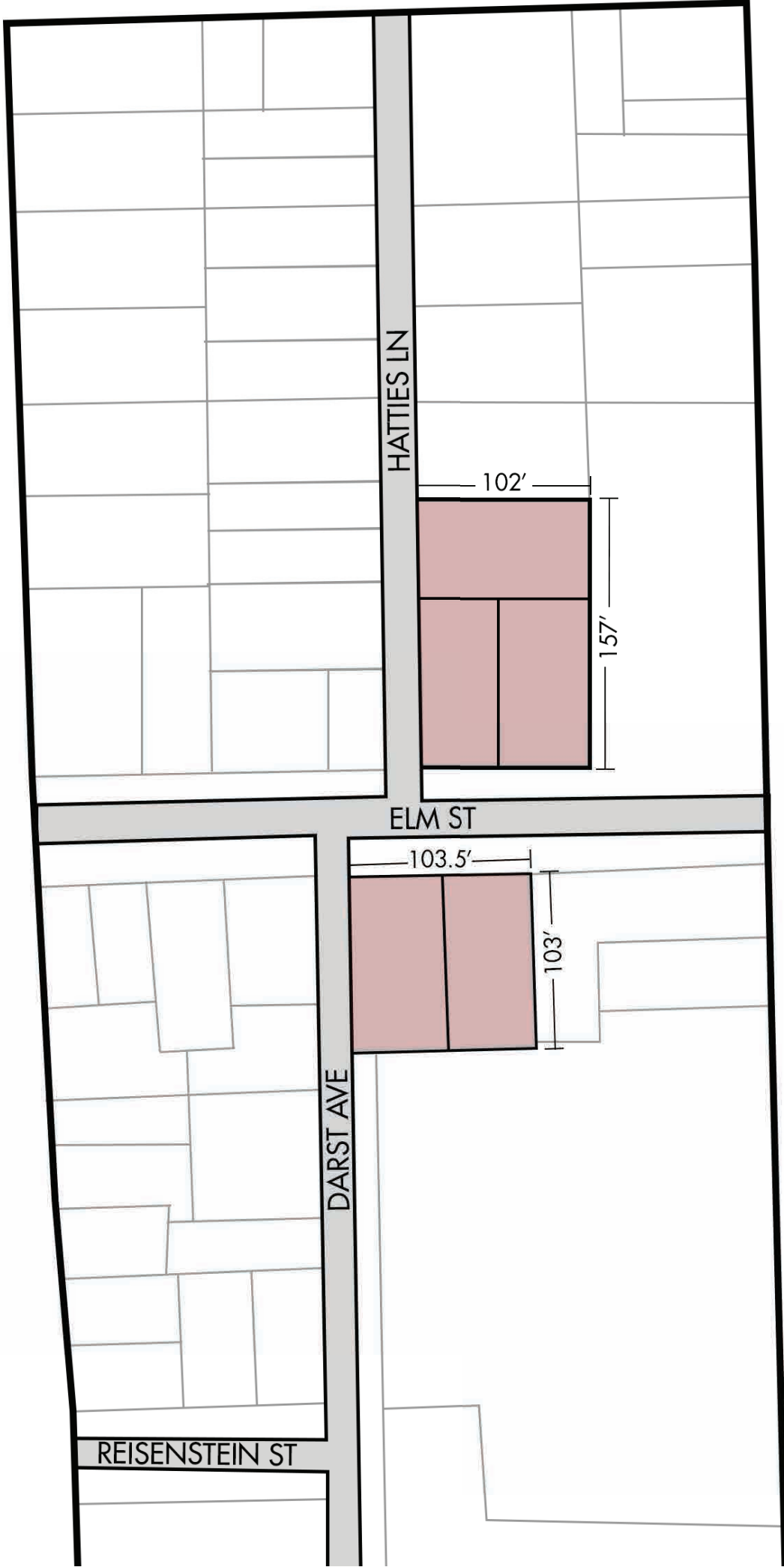
Zone 1

Site



Zone 1

Site





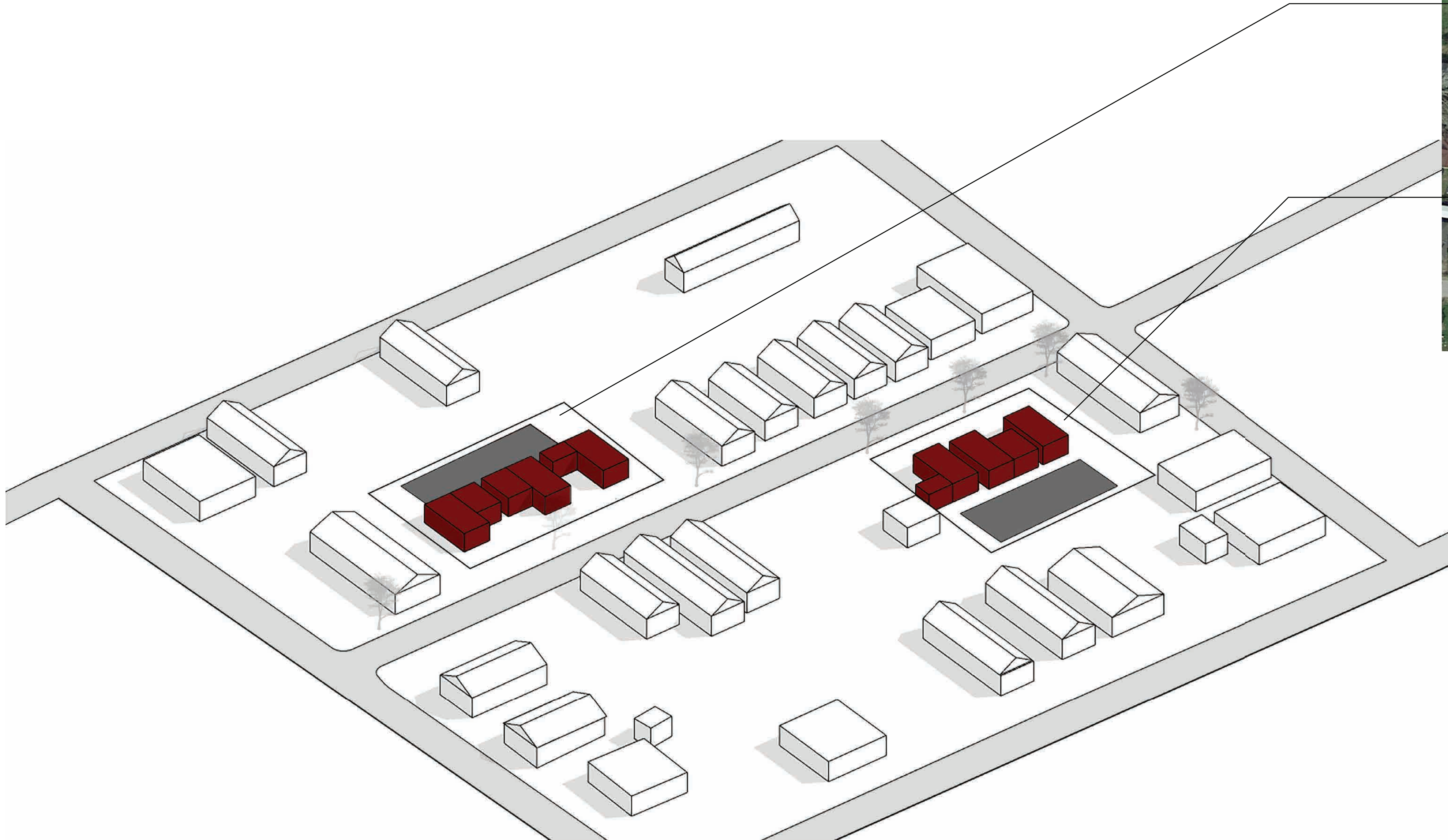




Community Garden

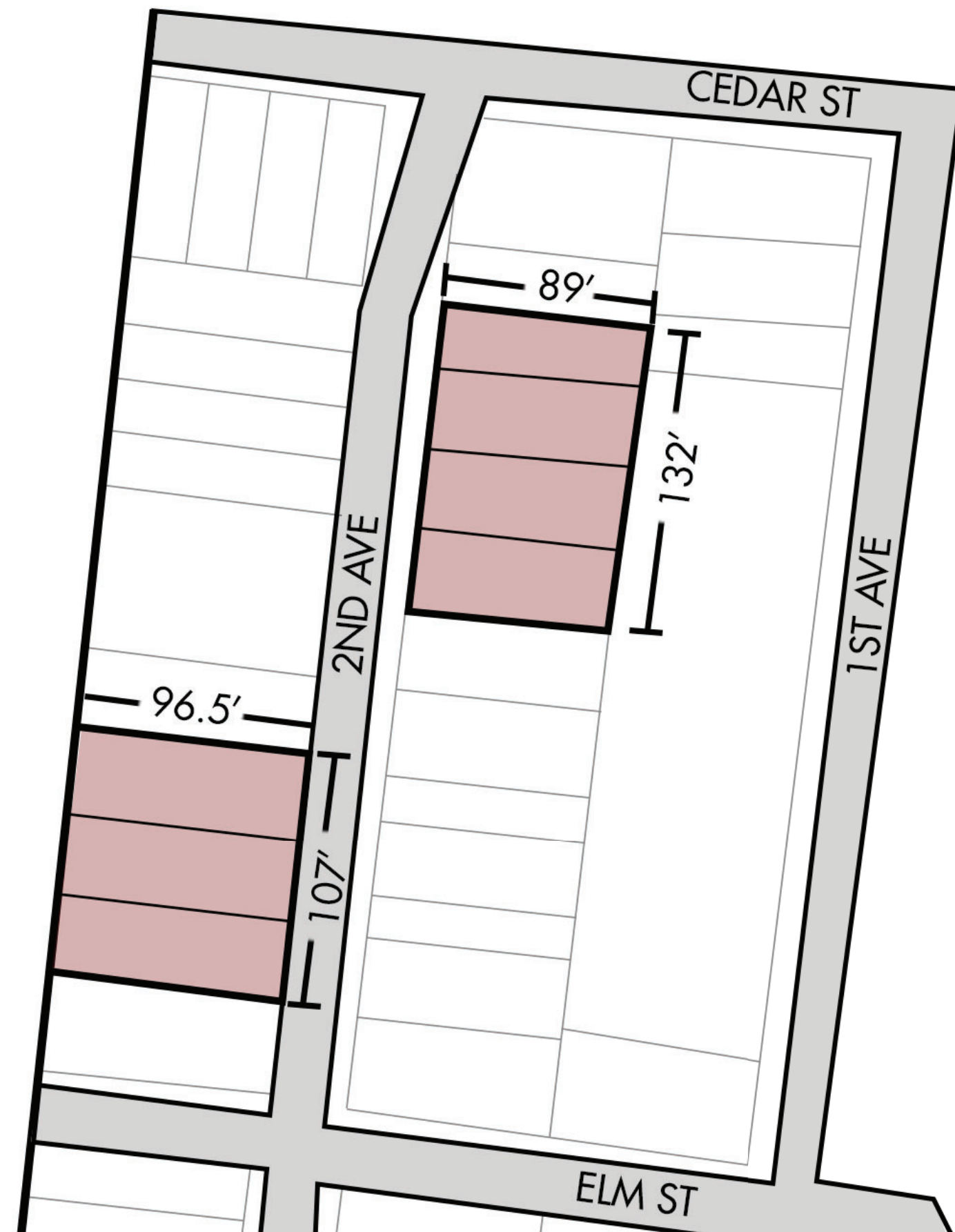
Zone 2

Site



Zone 2

Site



Core+

Interior Renders

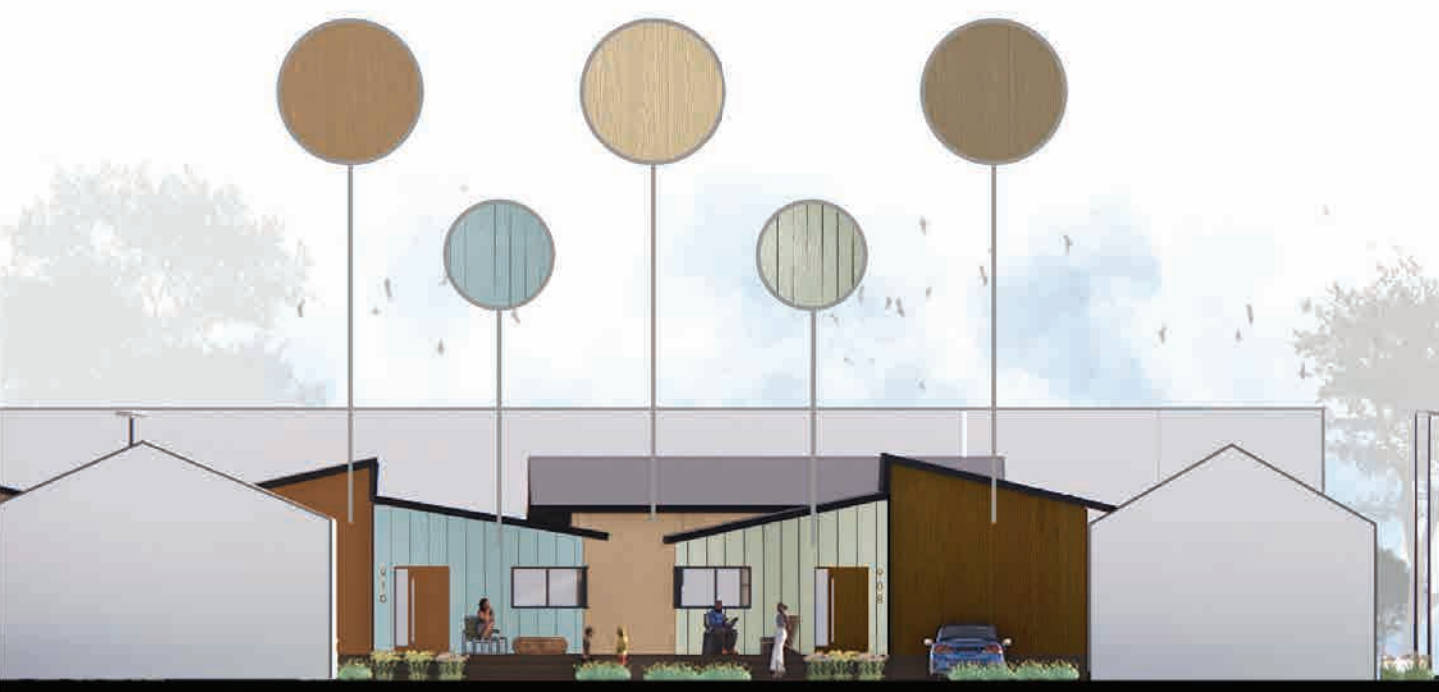
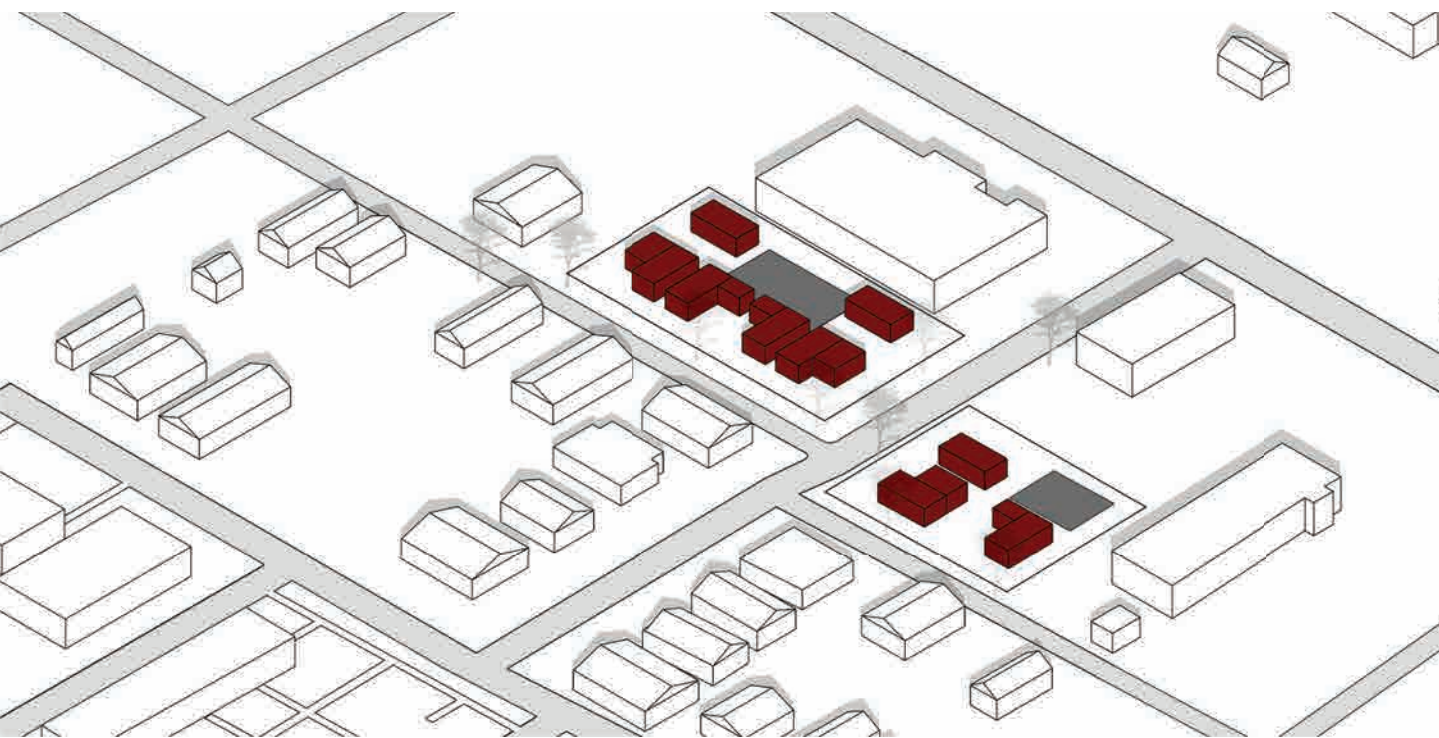




Bedroom



Kitchen



WEST ELEVATION

