

Tesoro Grove Apartments

PROJECT DATA:

DESCRIPTION:

Affordable Multi-Family Housing

TYPE:

Affordable apartment community

CONTEXT:

Site is a left over parcel between a major freeway and a wastewater pumping station.

ARCHITECT:

Studio E Architects, San Diego California

UNIT/ACRE:

12 Freeway Units, 32 through units, 24 townhouses
9 each 1 bedroom units, 42 each 2 bedroom units,
26 each 3 bedroom unit

HOME QUALITIES:

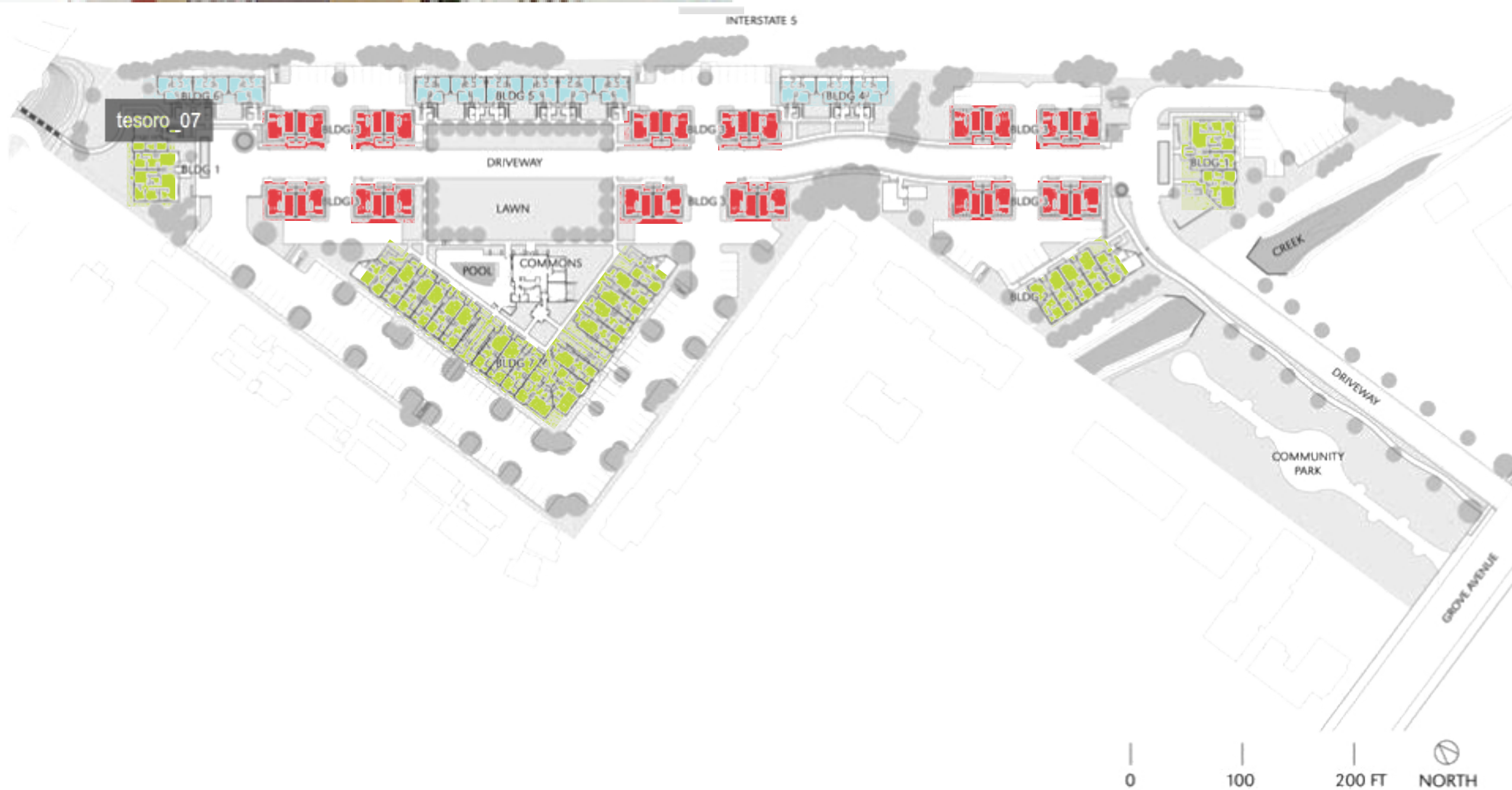
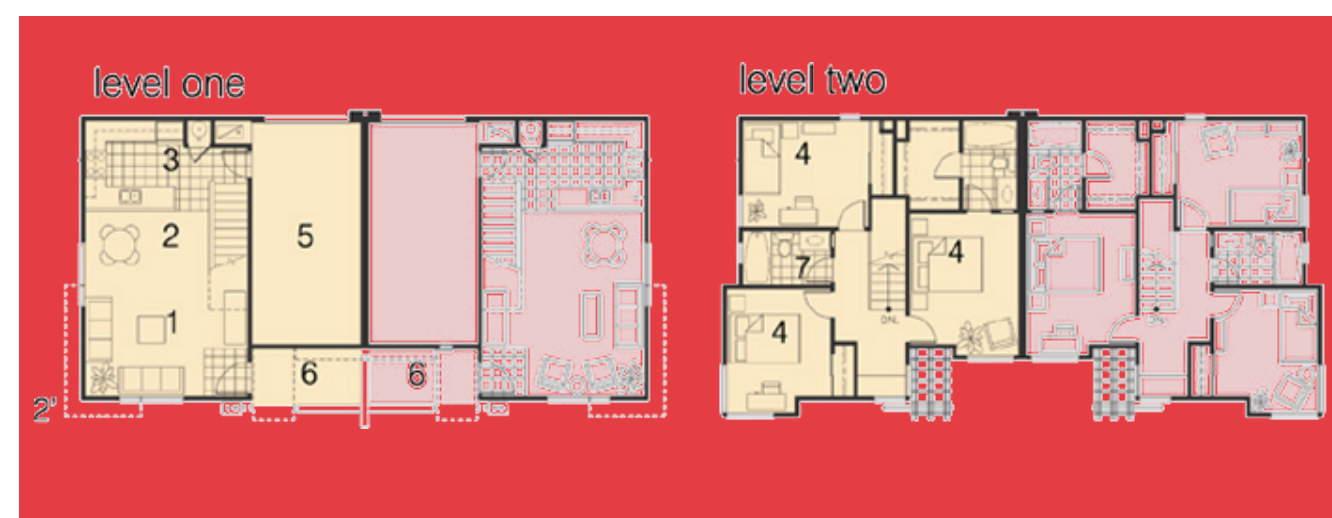
In response to the site, the setting of the project looks inward and is organized around a village street that links plazas, common areas and a large community lawn. Buildings are arranged to create usable space and form a legible realm. Porches, terraces and stoops give individual units a semi-private, yet engaged relationship with the larger community.

MATERIALS AND ASSEMBLIES:

Studio E hewed to it's budget with a simple kit of parts that includes fiber-cement board, MDF, and painted steel. Lexan sunshades and low concrete block walls help define each resident's entry area.

SUSTAINABILITY:

A special feature of the development is the common building- all of the electricity used to run the management office and laundry room is generated by using a photovoltaic system. The design team created a award winning site plan which created a walkable residential neighborhood, orienting the buildings is such a way that the buildings mitigated nearly all of noise generated by the adjacent freeway.



Images by Studio E Architecture

