

SUSTAINABILITY

ENERGY EFFICIENT WINDOWS AND MULTI-FAMILY STRUCTURES THAT MITIGATE HEAT LOSS THROUGH PARTY WALLS CONTRIBUTE TO THE ENVIRONMENTAL SUSTAINABILITY OF CITYLIFE, WHILE IT'S COURTYARD FOSTERS SOCIAL SUSTAINABILITY THROUGH COMMUNITY INTERACTION AND CONVERSATION.

CONNECTIONS

CITYLIFE IS LOCATED IN A WALKABLE AREA OF PORTLAND IS A PEDESTRIAN-ORIENTED DEVELOPMENT WITH IT'S FOCUS ON THE COURTYARD. PORCHES AND PATIOS LOCATED AT THE EDGE OF THE COURTYARD PROVIDE AN EXTENSION OF THE INTERIOR (PRIVATE) SPACE OF EACH RESIDENCE AND FOSTER AN INTERACTION BETWEEN INSIDE AND OUTSIDE. ALSO, SINGLE RESIDENCES ALONG THE STREET-FACING SIDE ALLOW FOR VIEWS AND CONNECTION BETWEEN THE SIDEWALK AND STREET AND THE INTERIOR OF THE COURTYARD.

OPEN SPACES

IN ADDITION TO THE COURTYARD, CITYLIFE IS LOCATED DIRECTLY ACROSS THE STREET FROM A PORTLAND CITY PARK, ALLOWING RESIDENTS THE OPTION OF BROADER OPEN SPACE IN WHICH TO CONDUCT ACTIVITY.

RESPONSE TO CONTEXT

WITH INDUSTRIAL WAREHOUSE FACILITIES LOCATED BEHIND THE SITE, THE EXTERIOR CLADDING AND MASSING OF THE BUILDINGS HINTS TO THOSE INDUSTRIAL ROOTS; HOWEVER, WHILE INSPIRATION WAS DRAWN FROM THE LOCAL INDUSTRIALISM, THE WAREHOUSE WAS NOT A DESIRABLE VISUAL FOCUS. THE MULTI-FAMILY BUILDINGS ARE PLACED AT THE REAR OF THE SITE TO PROVIDE A SCREEN FROM THIS FORM THE COURTYARD AND STREETScape.

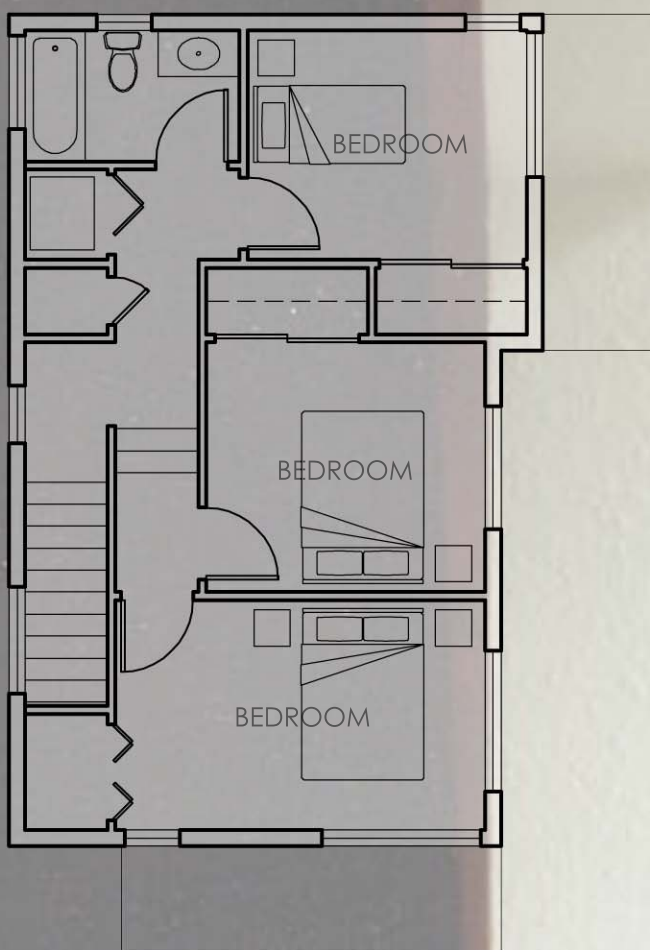
HOME QUALITY

WITHOUT SACRIFICING ON THE PHYSICAL QUALITY OF THE MATERIALS, CITY LIFE IS AN AFFORDABLE COMMUNITY. THIS MEANS THAT THE HOMES ARE SOLD TO PEOPLE WHO MAKE LESS THAN 80% OF THE AREA MEDIAN INCOME.

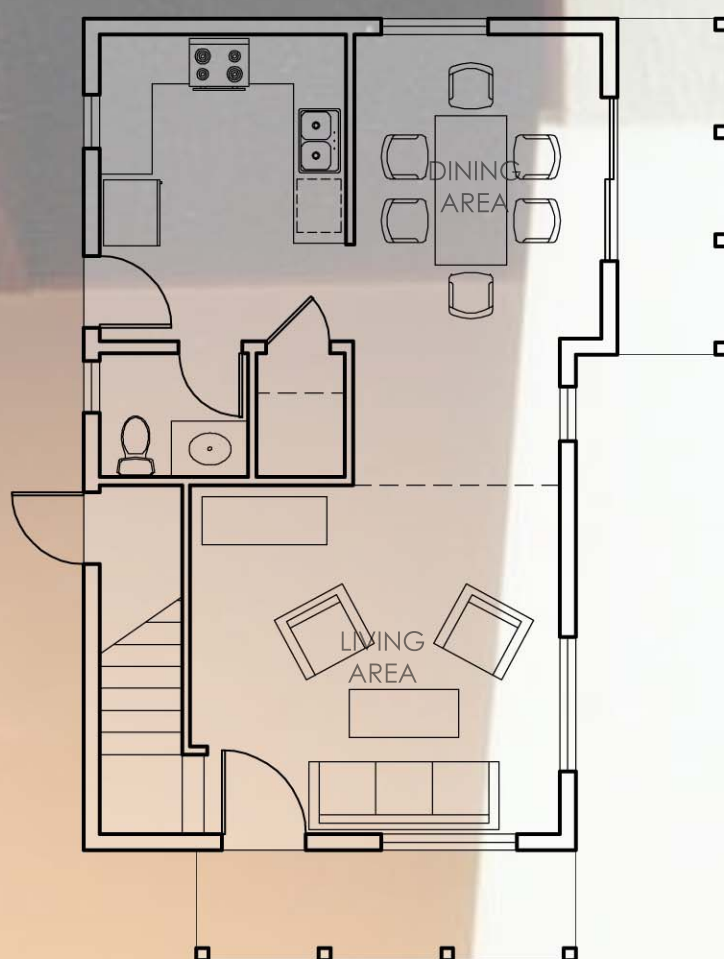
CITY LIFE COURTYARD HOUSING

SE 16TH STREET & CENTER STREET
PORTLAND, OREGON

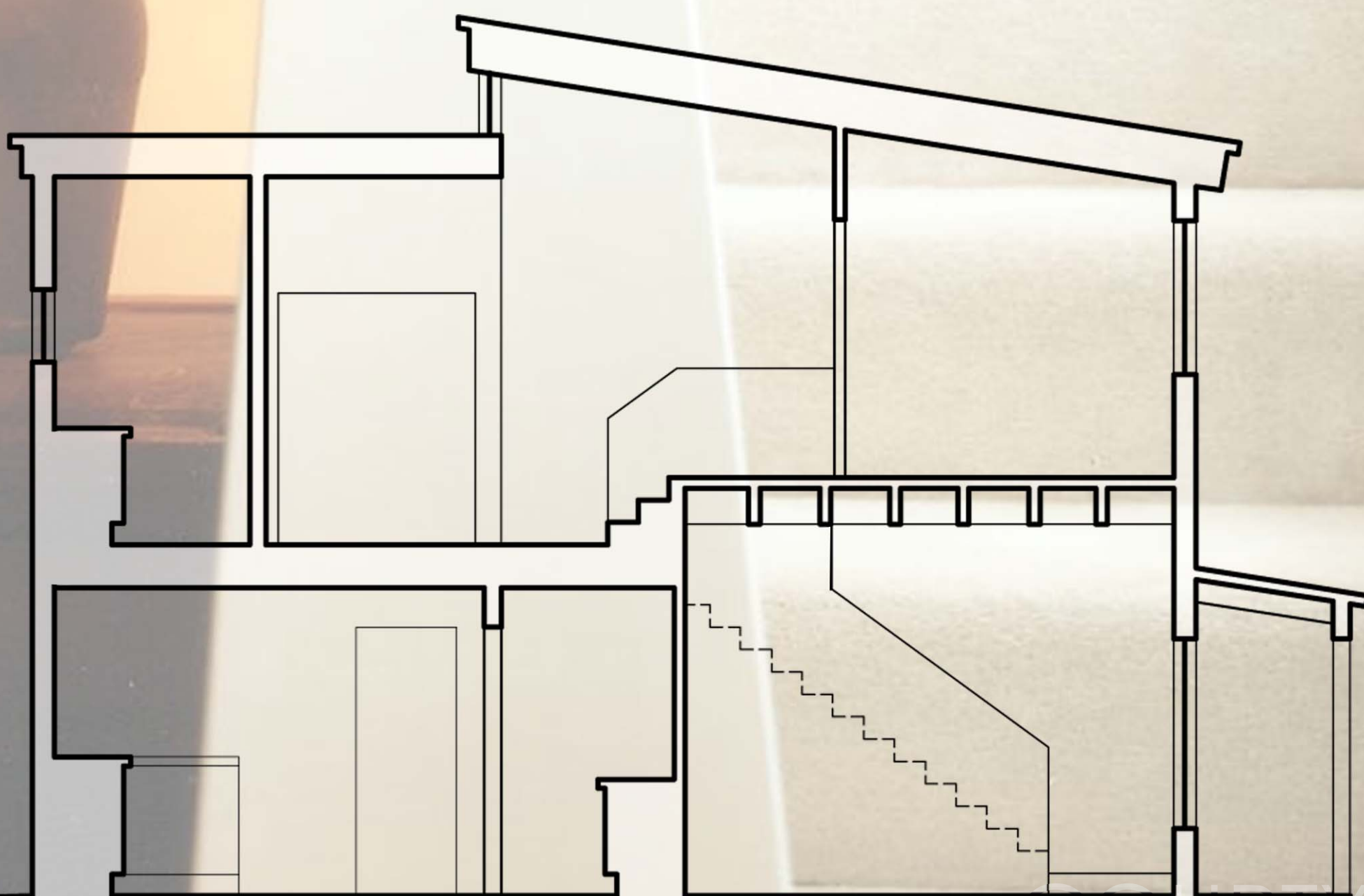
ROBERTSON, MERRYMAN, BARNES ARCHITECTS INC.
AFFORDABLE HOUSING PROJECT
COMPLETED: 1995



SECOND LEVEL



FIRST LEVEL



city life
COURTYARD HOUSING