

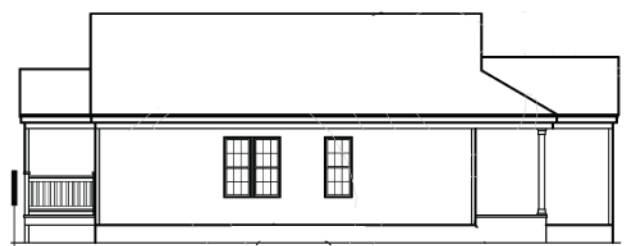
Habitat for Humanity

Wake County Plan 10-1080-DT



Front Elevation

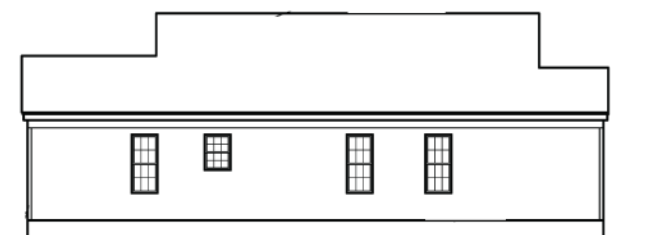
Scale 1/4"=1'



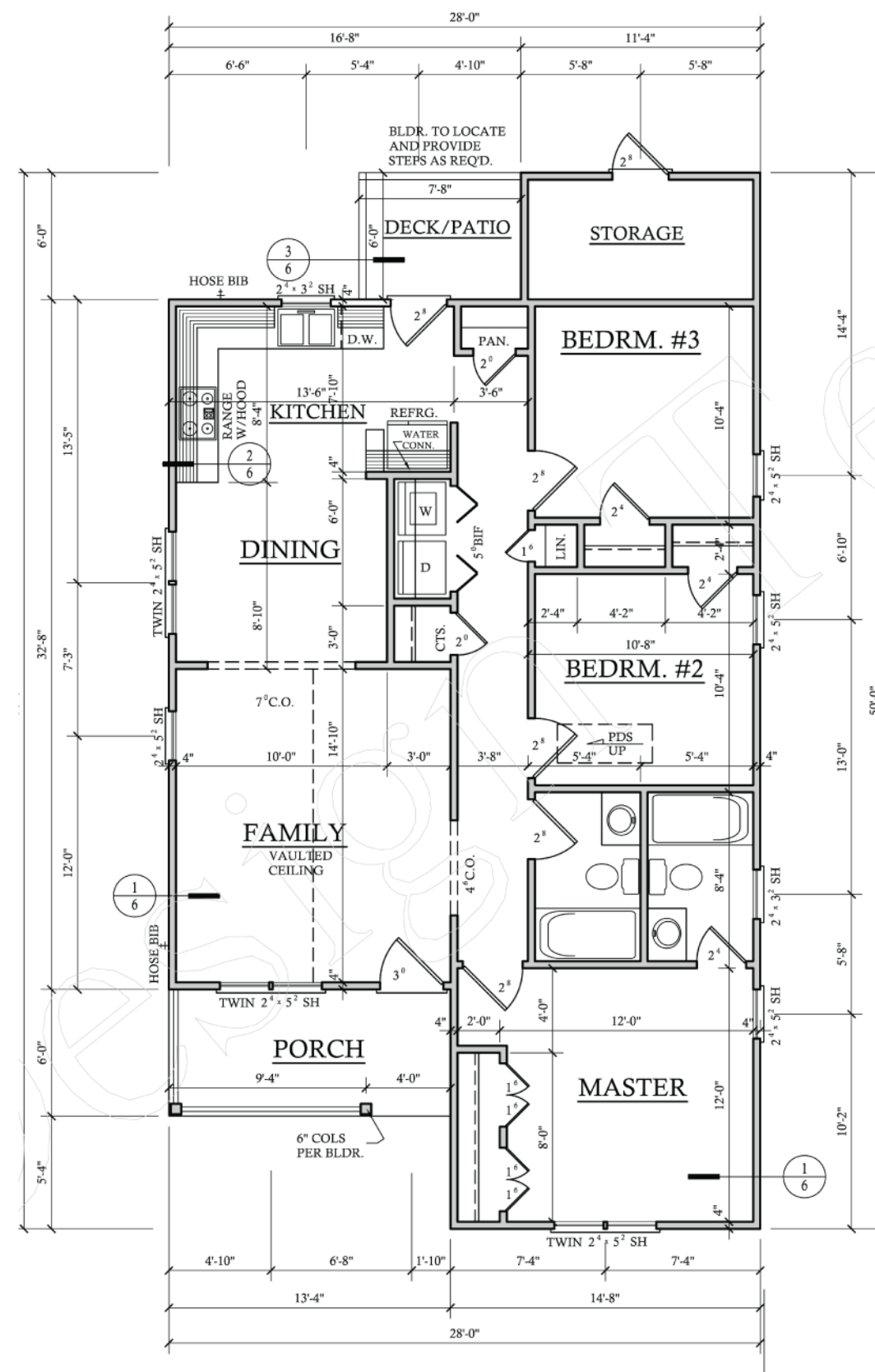
Left Elevation Scale 1/16"=1'



Rear Elevation Scale 1/16"=1'



Right Elevation Scale 1/16"=1'



Floor Plan Scale 1/8"=1'

Specifications:

Square feet -	1080
Bedrooms -	3
Baths -	2

Home Qualities:

The house features a vaulted ceiling with a fan in the living room which makes the small house feel more spacious. Privacy is given by separating private and public with a hall and by buffering between bedrooms with closets and bathrooms.

Plan Efficiency:

The plan is logically laid out with public functions open to each other on the left and private bedrooms and baths to the right. The middle corridor is loaded as much as possible with storage, doorways and laundry.

Materials and Assemblies:

Standard stick built framing materials as well as pre-fabricated trusses were used to make construction easy for contractors and volunteer labor.



- Circulation
- Service - Kitchen/Bath
- Living and Bedrooms
- Storage