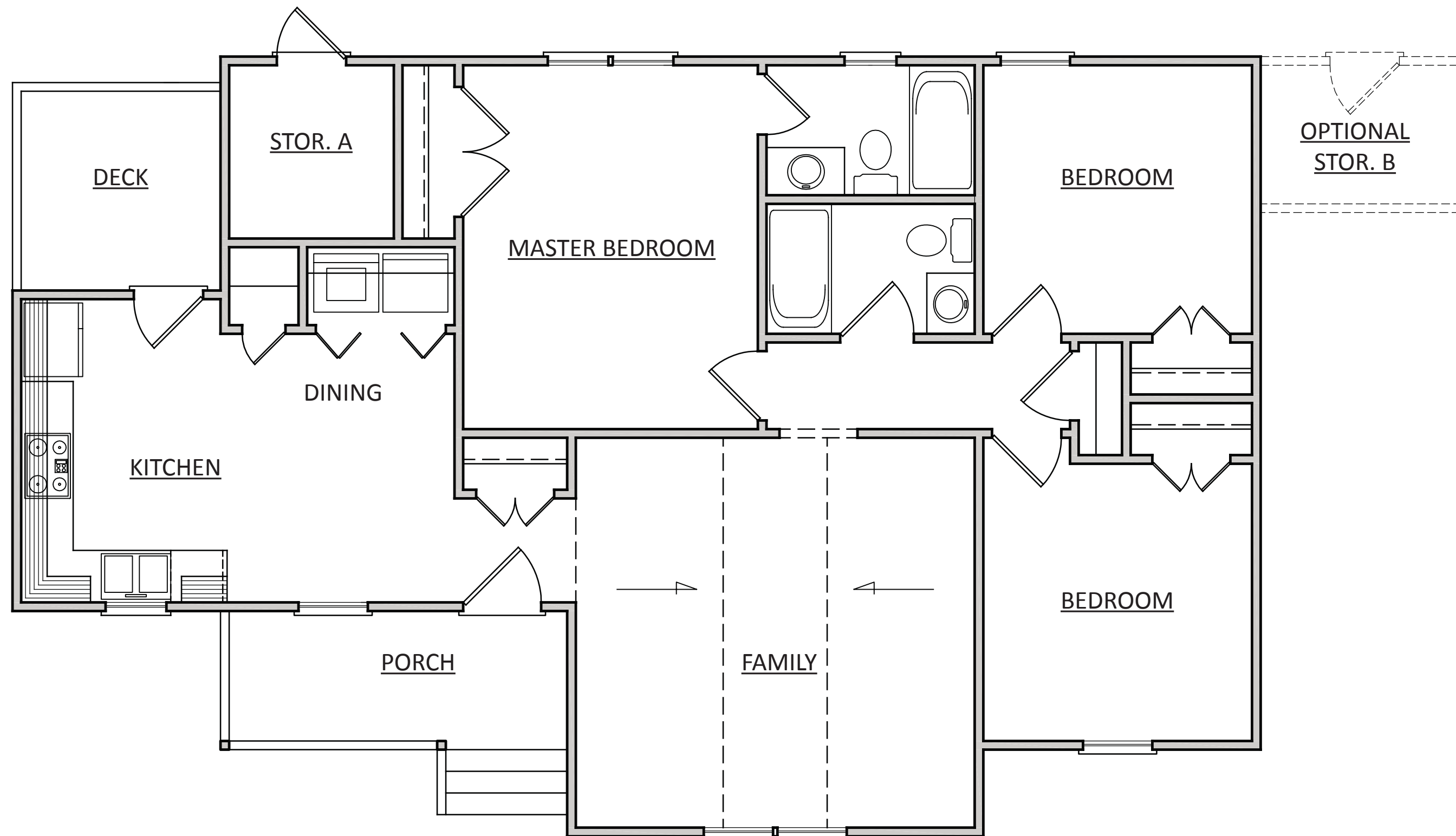
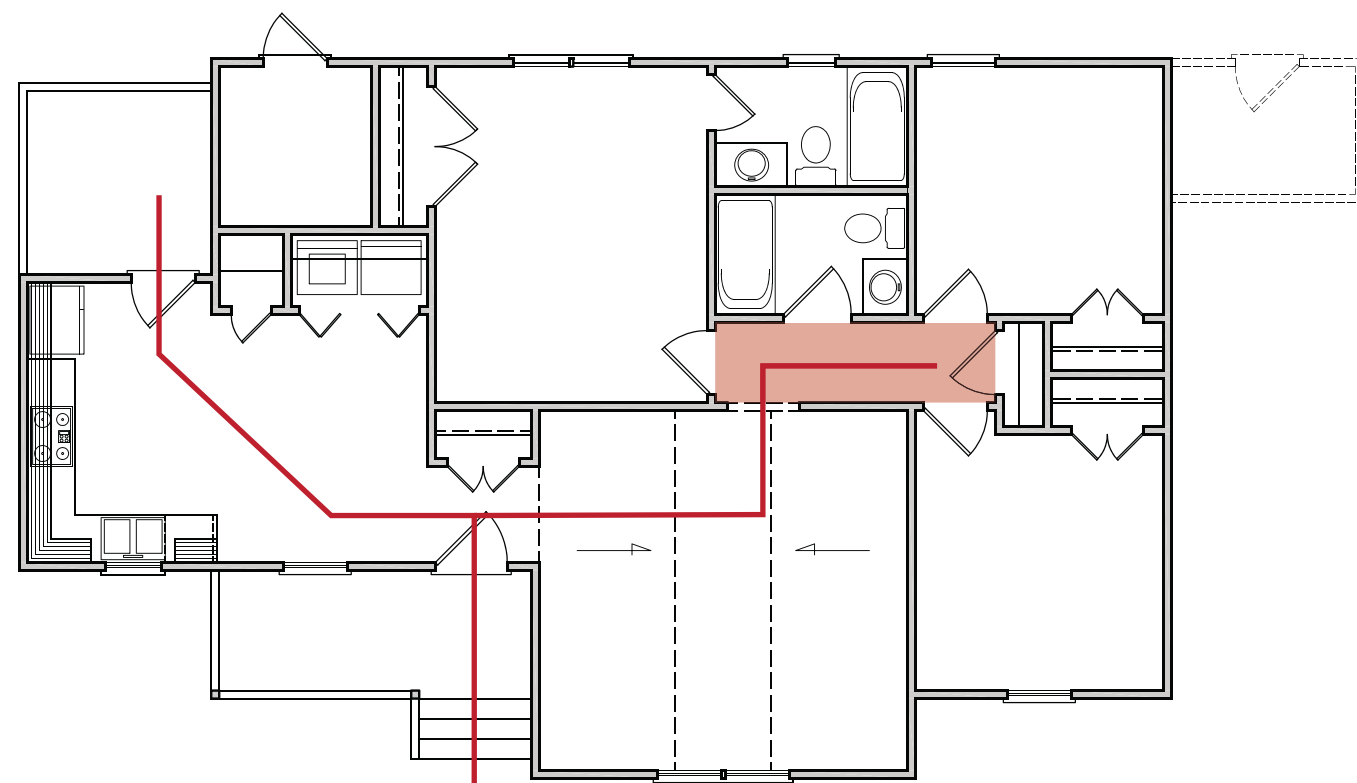


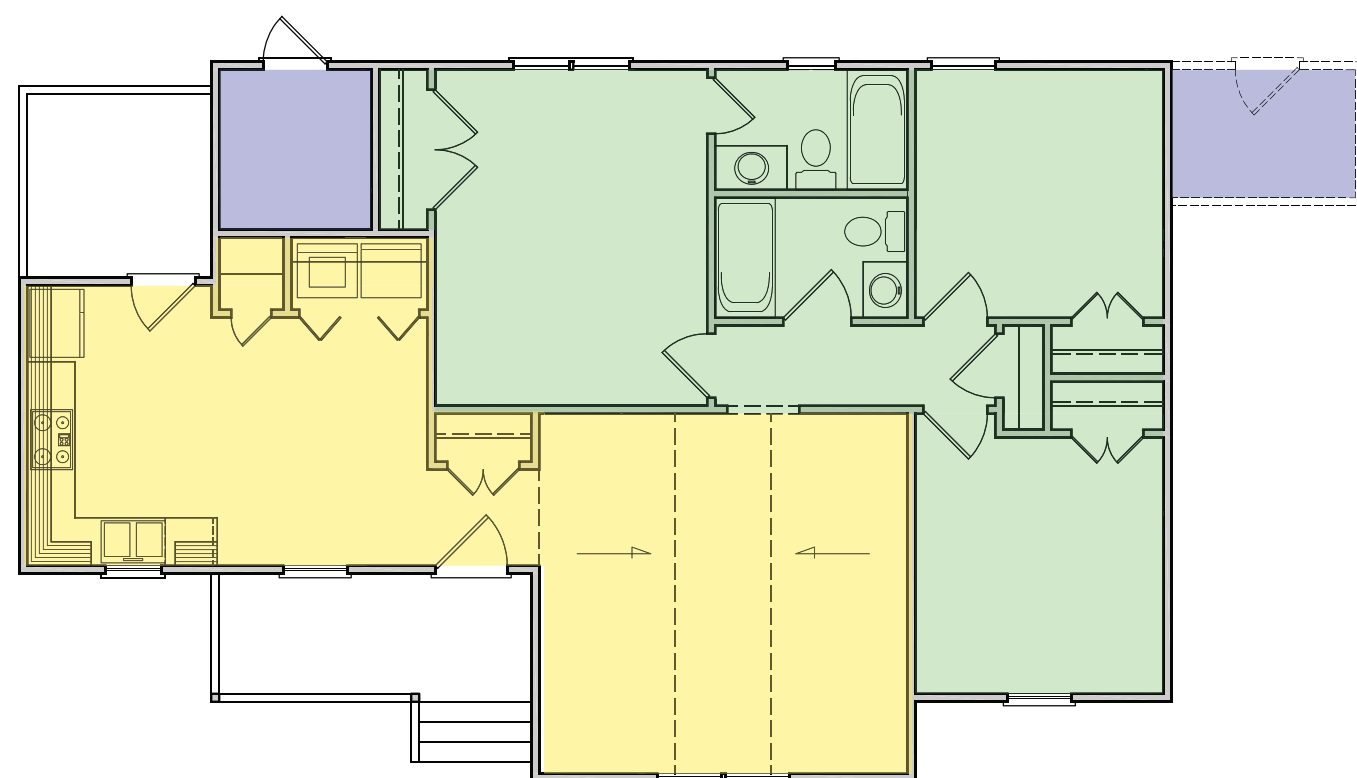
Habitat Plan 1101



FLOOR PLAN
1/4" = 1'-0"



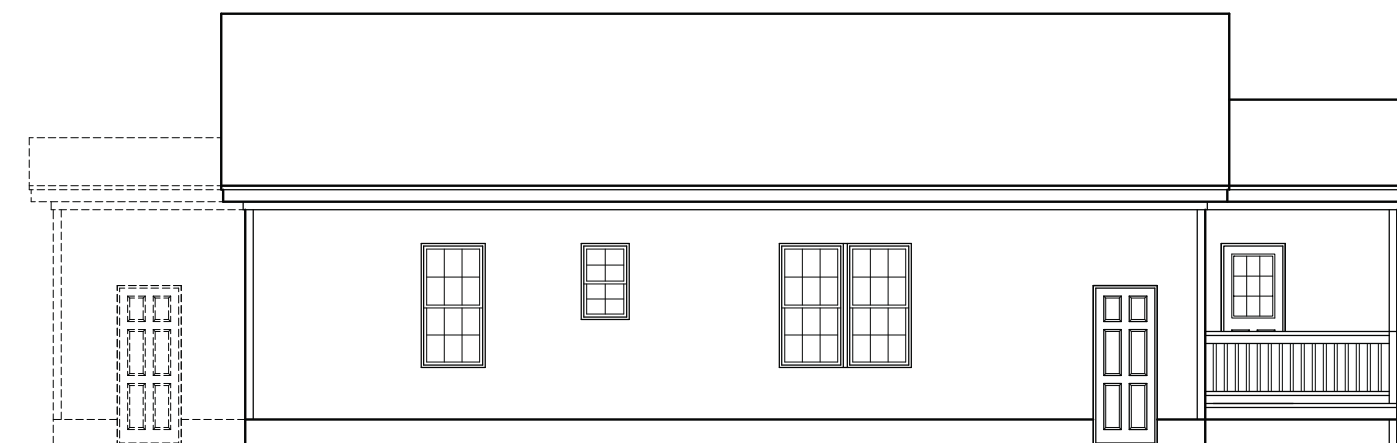
CIRCULATION PLAN
1/8" = 1'-0"



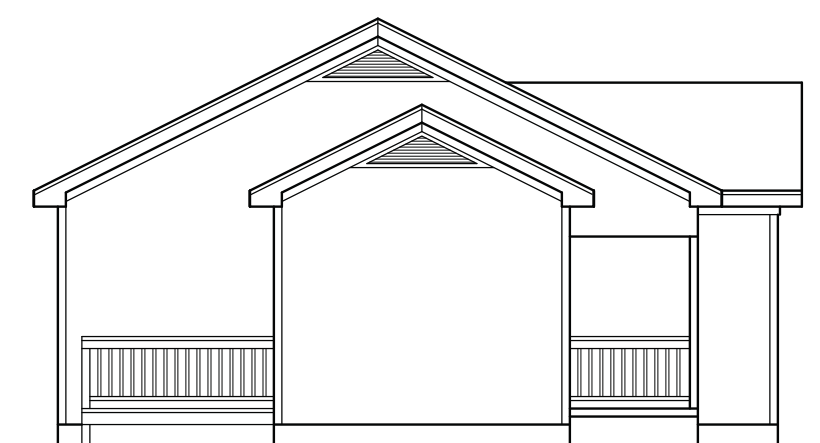
USE OF SPACE
1/8" = 1'-0"



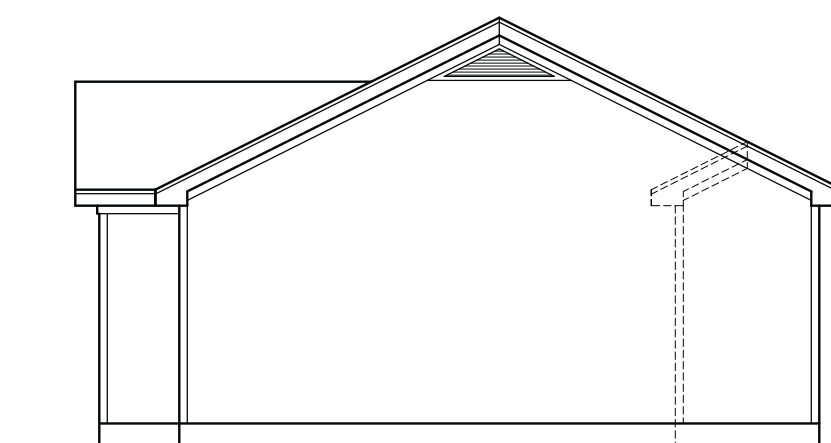
FRONT ELEVATION
1/8" = 1'-0"



REAR ELEVATION
1/8" = 1'-0"



LEFT ELEVATION
1/8" = 1'-0"



RIGHT ELEVATION
1/8" = 1'-0"

PROJECT DATA:

DESCRIPTION:

Three bedroom, two bathroom single family house designed by Habitat for Humanity.

ARCHITECT:

Habitat for Humanity

TOTAL SF: 1101

HOME QUALITIES:

Vaulted ceilings in the living room and 9' ceilings throughout the house give the interior an open feel. The bedrooms are designed as a private section, separated from the public living spaces. An open kitchen with the small dining nook creates an inviting environment. A front porch creates a welcoming entry while the rear deck allows for privacy from the street.

MATERIALS AND ASSEMBLIES:

Using standards construction details and assemblies, all of the Habitat for Humanity houses are designed to be both affordable and easy to build. Standard wood construction on top of either concrete slab foundation or crawl space is used depending on the site. The exteriors may vary from house to house, but typically hardiplank siding is used.

SUSTAINABILITY:

The house implements operable windows for the use of natural ventilation and low-energy fixtures are used on the interior. Without a specific site, it is difficult to implement passive solar strategies because no orientation is certain.

NEGATIVES:

For the most part, the plan is well thought out for a relatively simple, efficient plan. However some wasted space is used for circulation in the bedroom "corridor." Also, the entry is a bit awkward, as the user walks directly into a closet upon opening the front door. The initial storage is well fit into the footprint, but the optional second storage is simply tacked on the exterior.