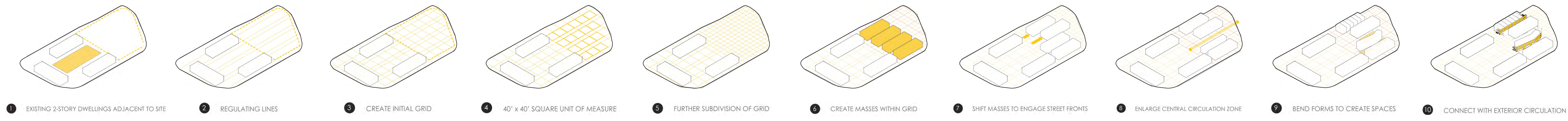
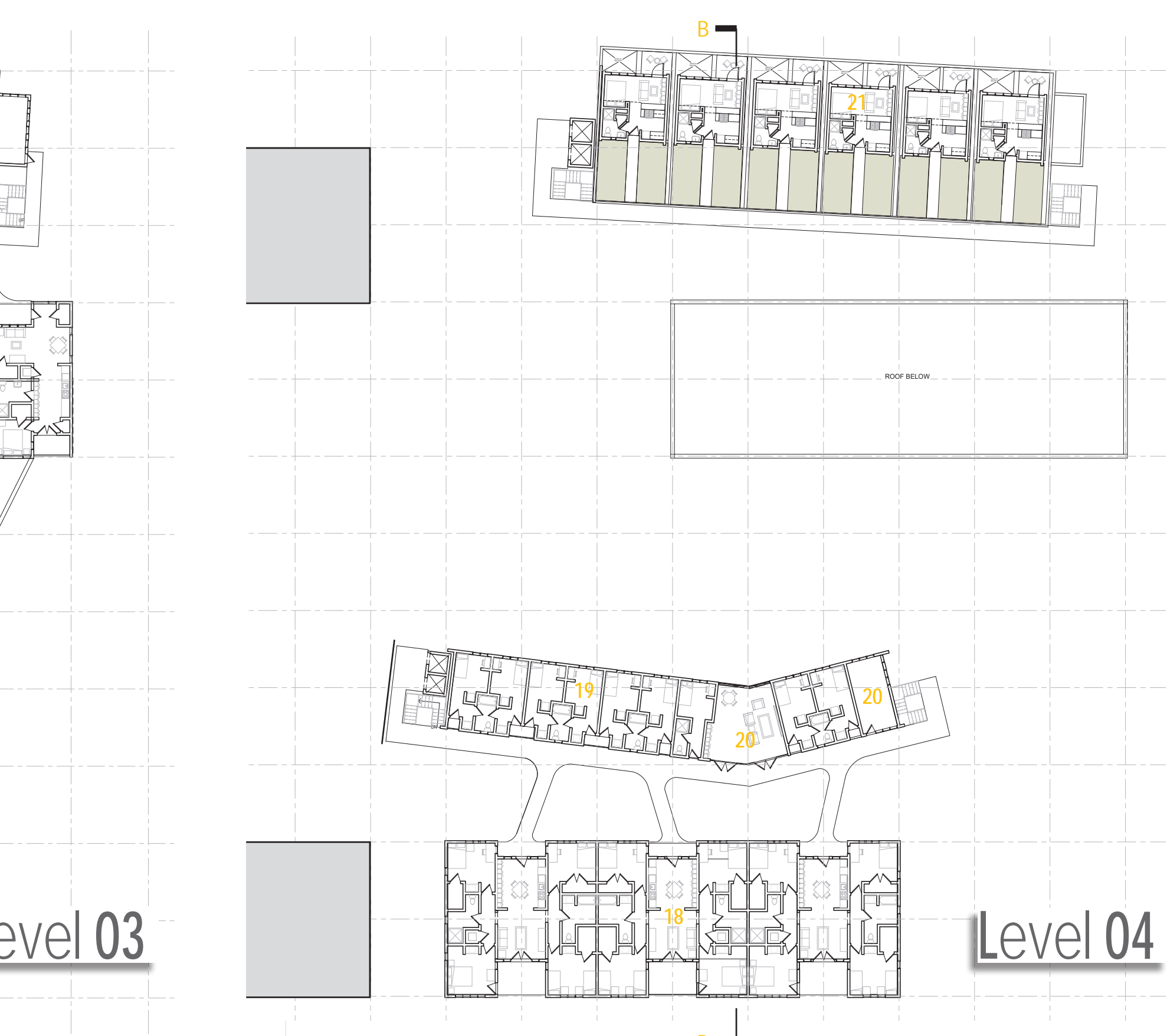
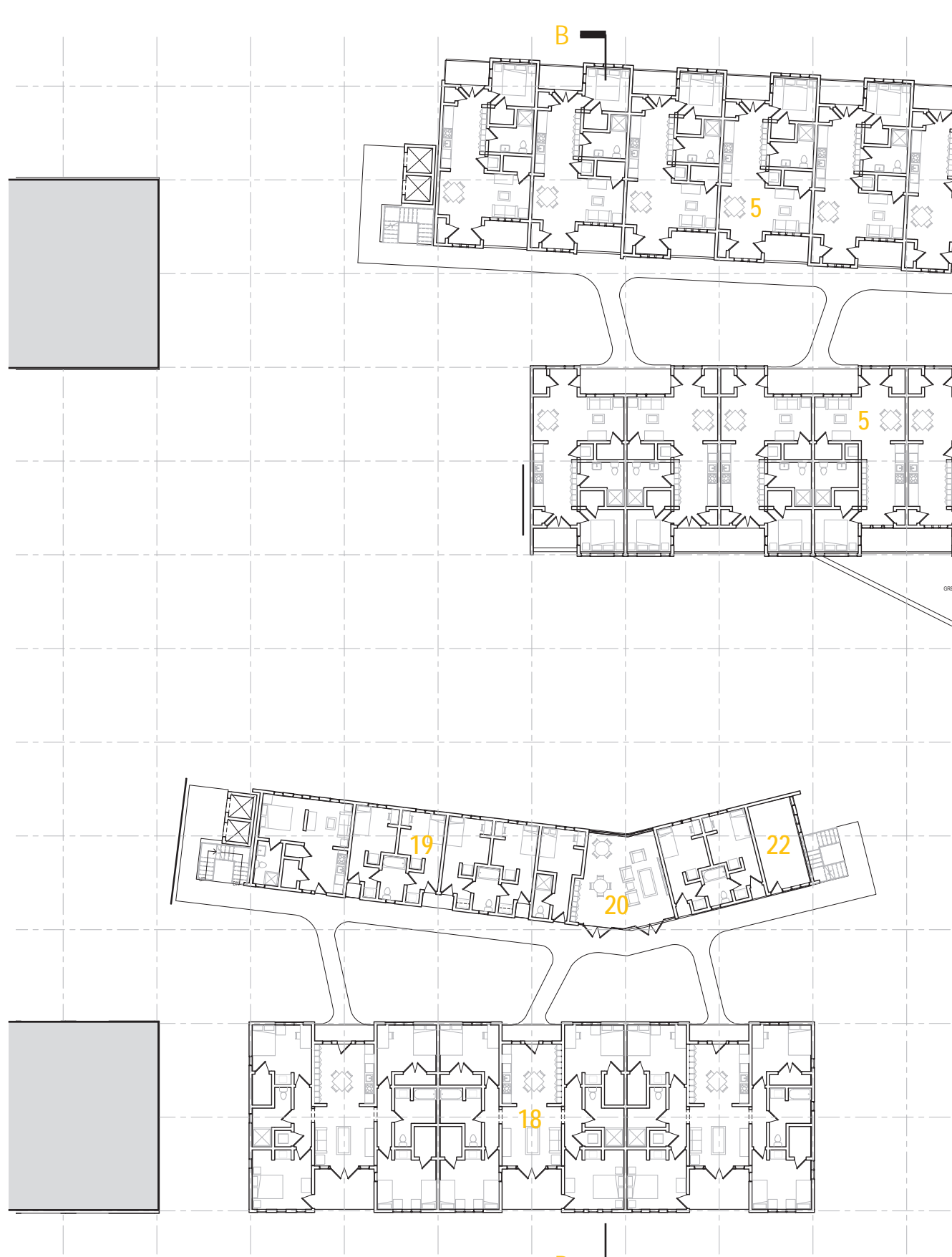
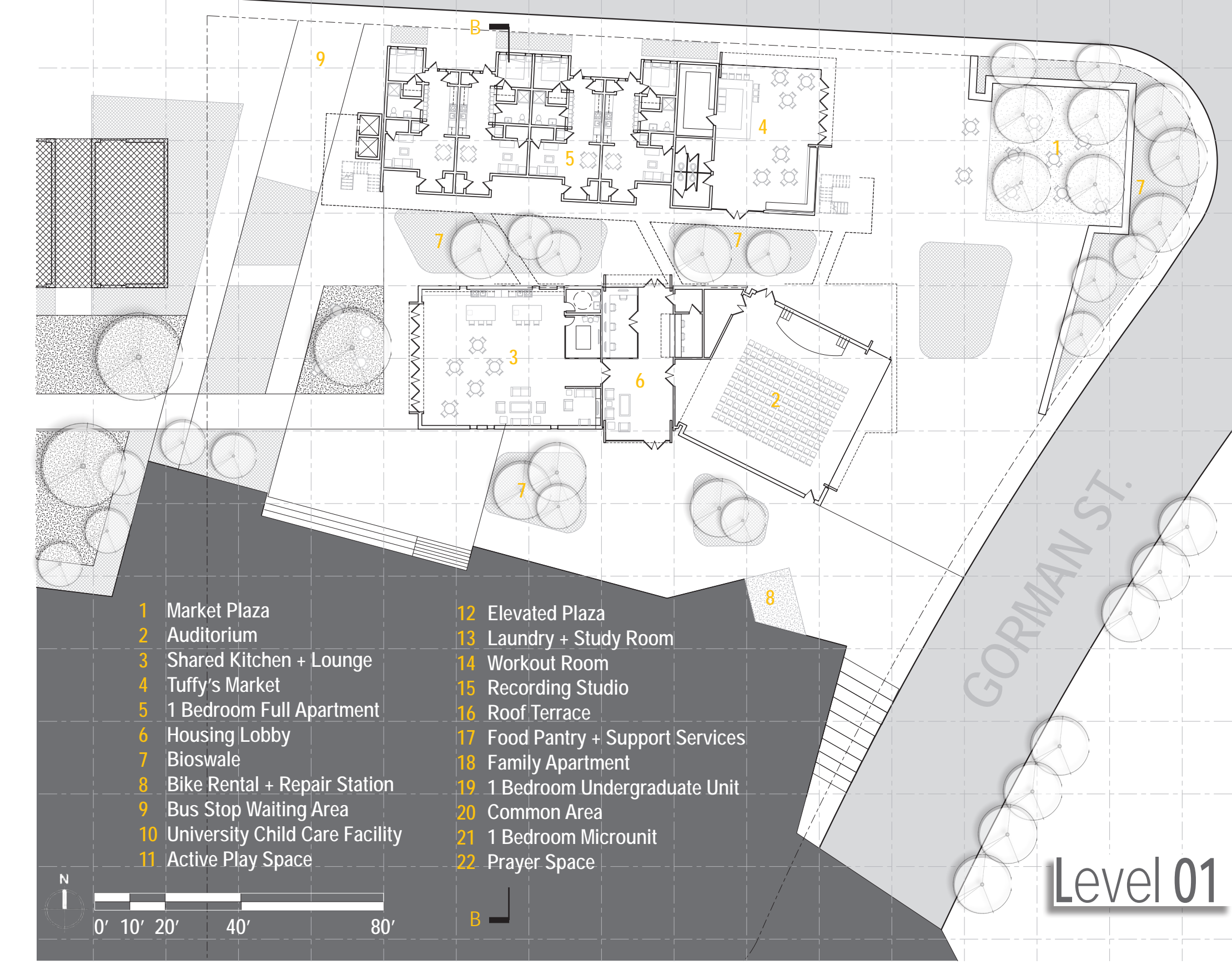


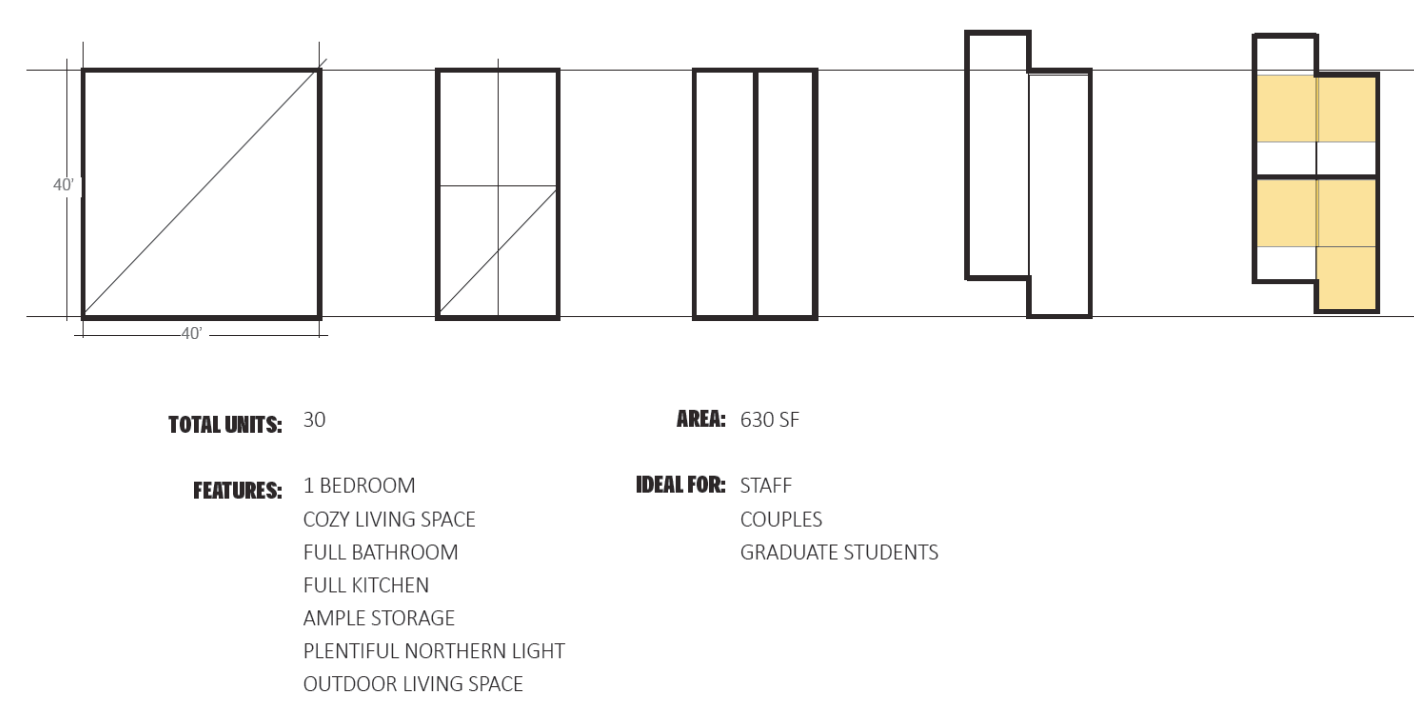
total unit count: 58  
total bed count: 92  
total building SF: 46,000 SF  
total site area: 1.2 acres



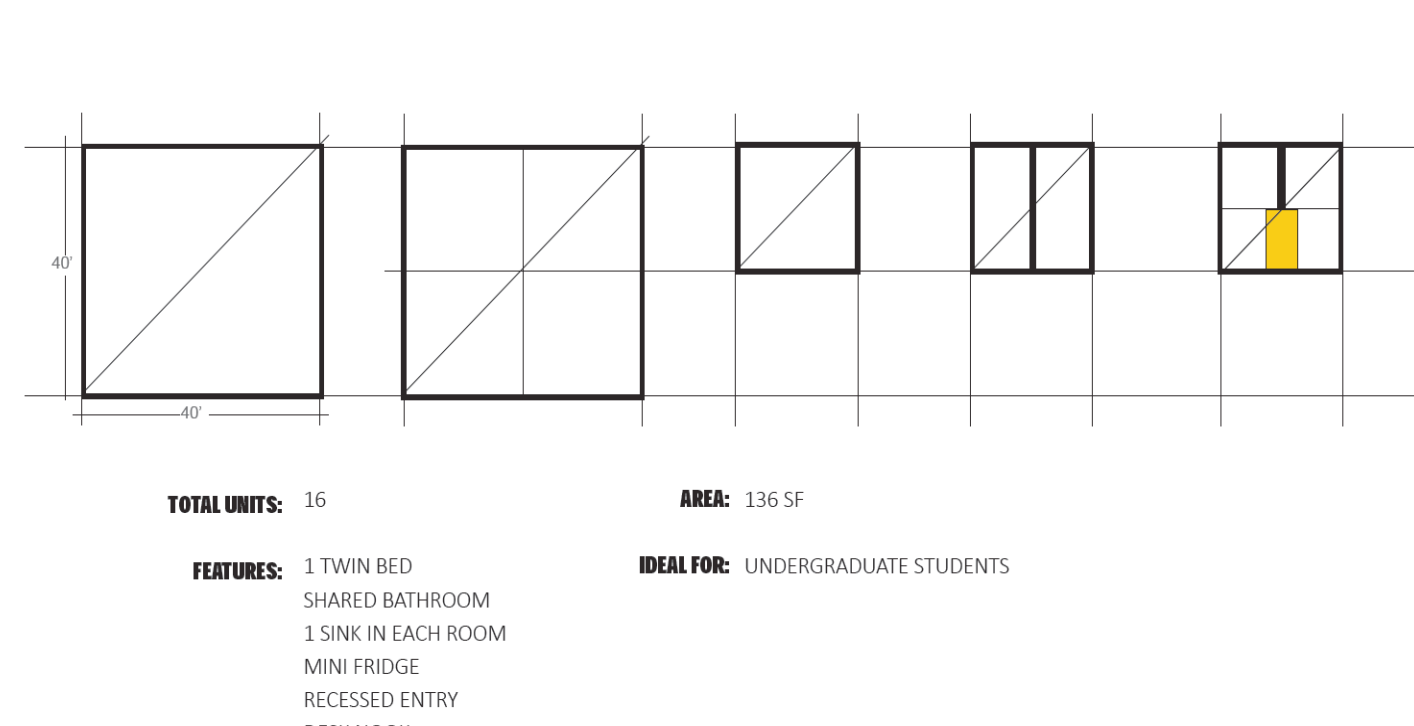
**ALL SQUARED AWAY** This project aims to create a **community-centered** place that provides a **variety of services and housing types** to serve a **diverse range of students**. The densely-planned site will encourage spontaneous interactions and healthy activities. Numerous **sustainable approaches** include microunit living options, bike-friendly amenities, on-site water management, solar energy production, and **repurposing** of existing campus courtyards. The project would serve as an example for **revitalizing** places and spaces on campus as well as raising the bar for future development at NC State and other universities across the country.



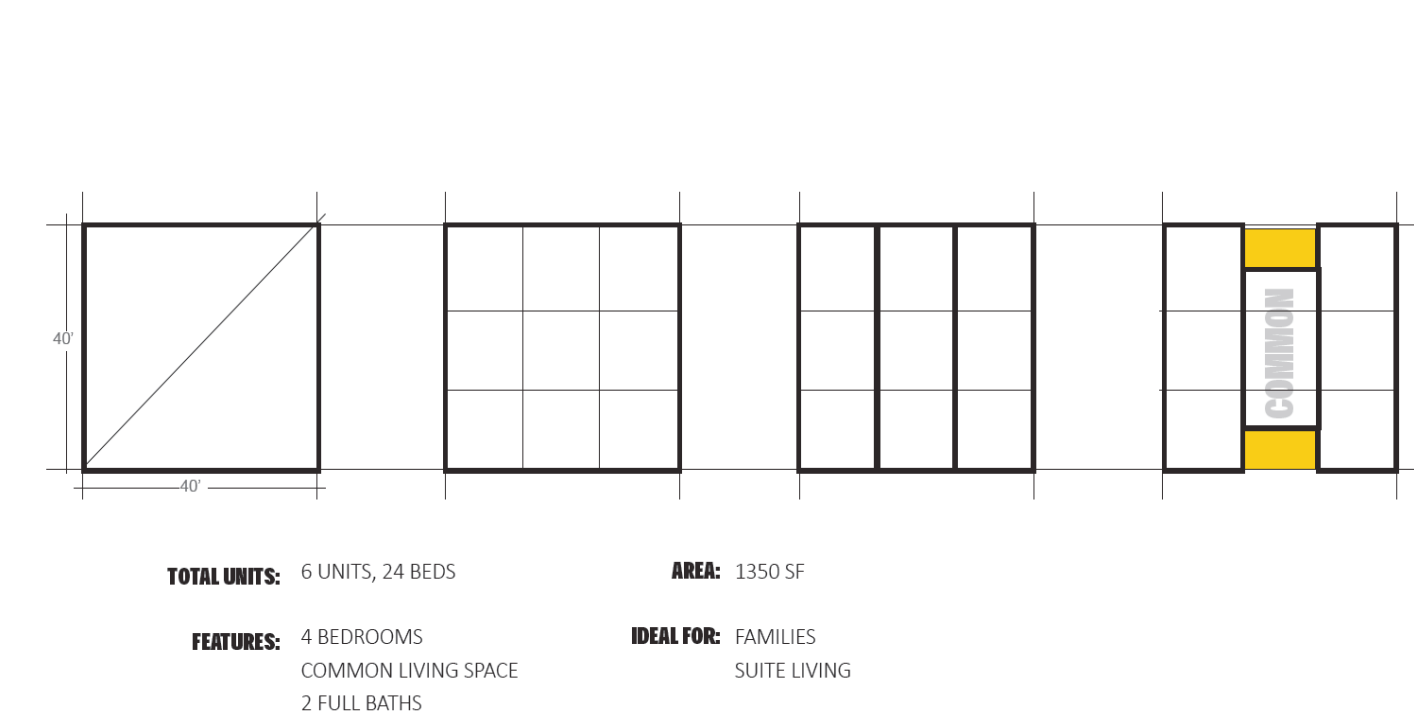
UNIT TYPE: 1 BEDROOM "Z"



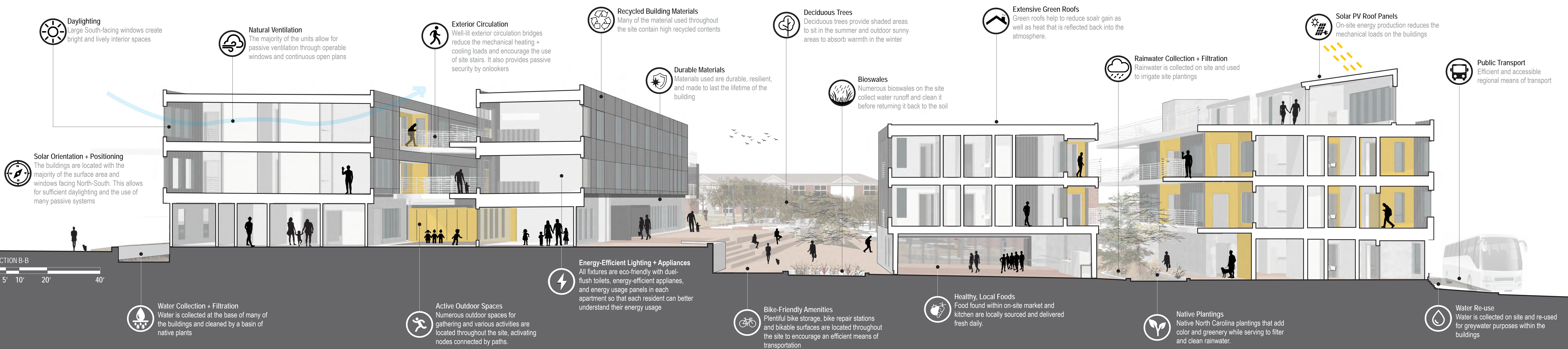
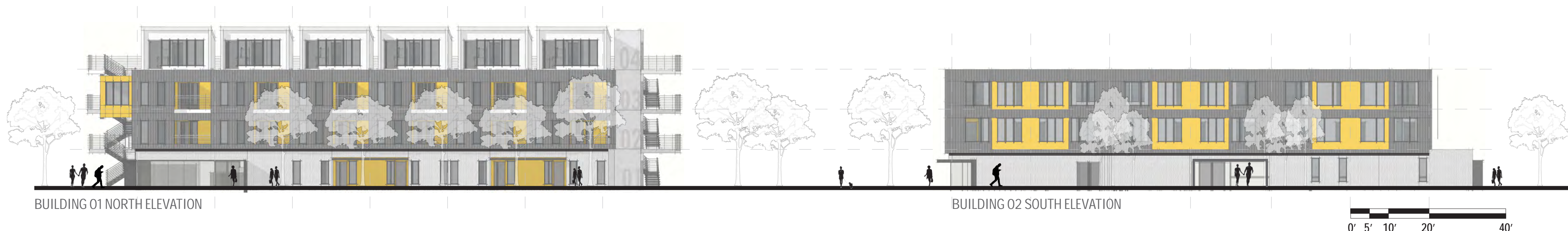
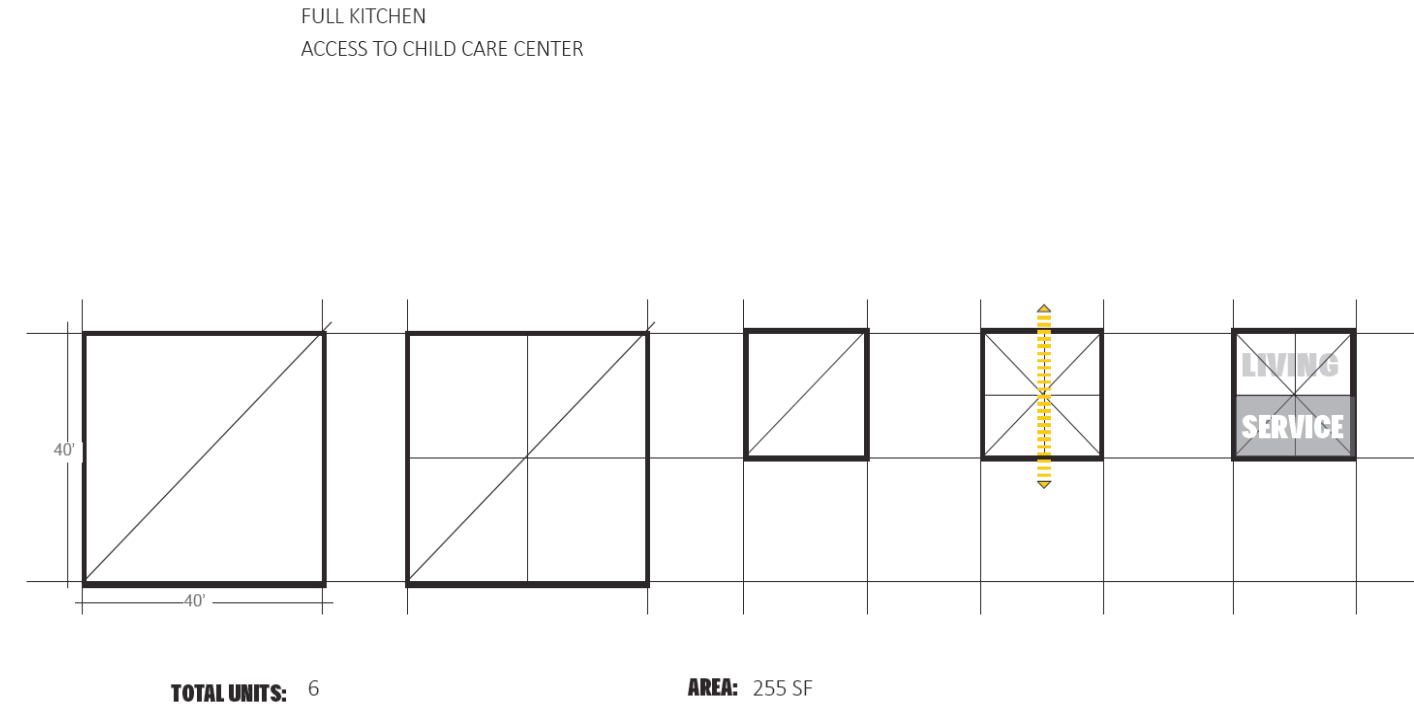
UNIT TYPE: 1 BEDROOM DORM-STYLE



UNIT TYPE: 4 BEDROOM FAMILY-SUITE



UNIT TYPE: 1 BEDROOM MICROUNIT



# AFFORDABLE + SUPPORTIVE HOUSING FOR NC STATE

School of Architecture | College of Design | NC State University