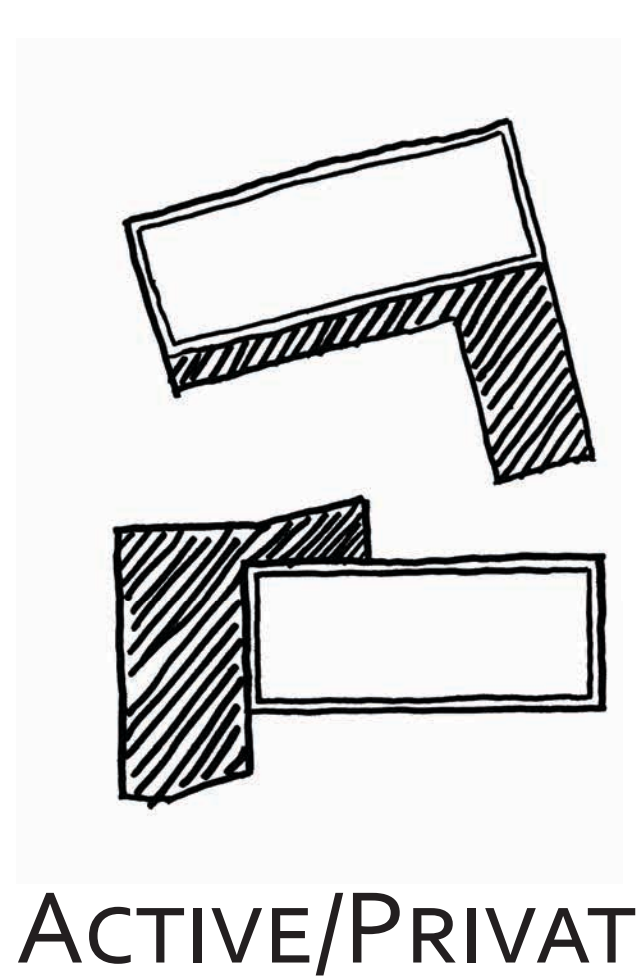


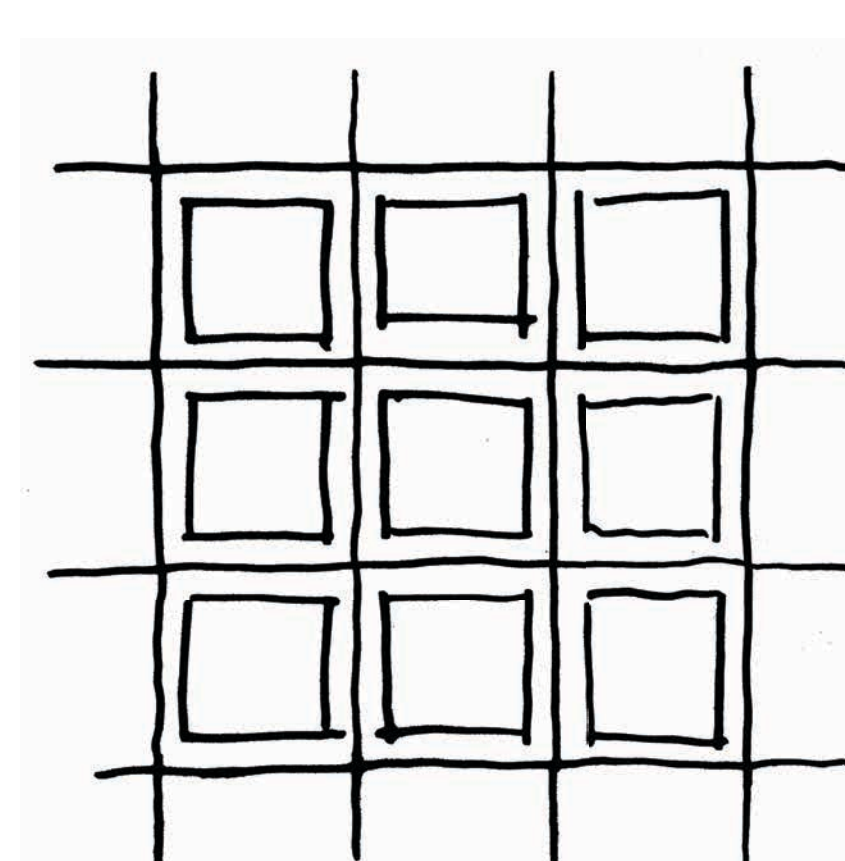
The Oberlin Residences + Student Resource Center fosters community and a supportive living environment through public interfaces and shared living community spaces. The vertically-organized Student Resource Center provides a campus hub for supportive services. Micro-units, apartments, and dorm style living serve a diverse student population. The southern exterior terraces comprise a range of public spaces. Health and wellness spaces are incorporated into the interior courtyard, which includes a shared kitchen, laundry and lounges, and rooftop edible gardens. All foster a healthy and safe environment for visitors and residents to grow and learn together.

30 MICRO UNITS
18 DORM UNITS
10 APARTMENTS

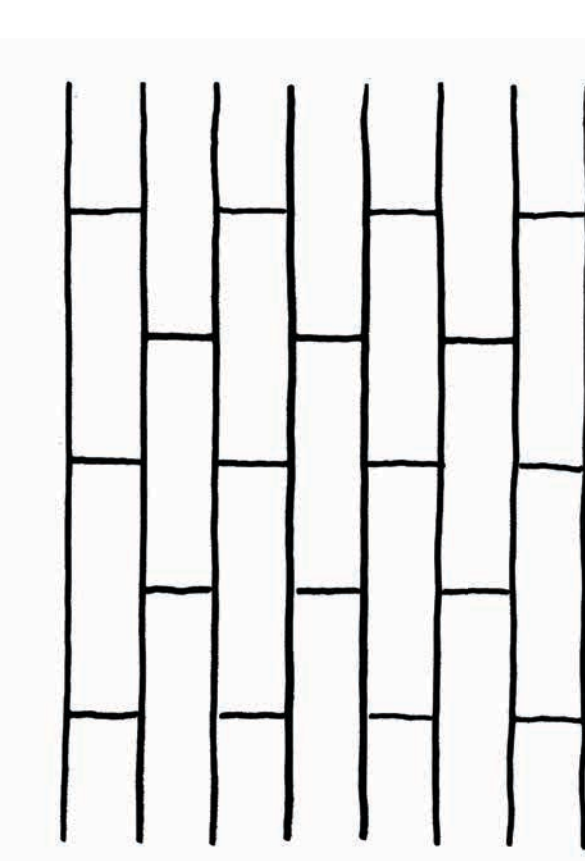
SIZE: 40,000 SF
BED COUNT: 86



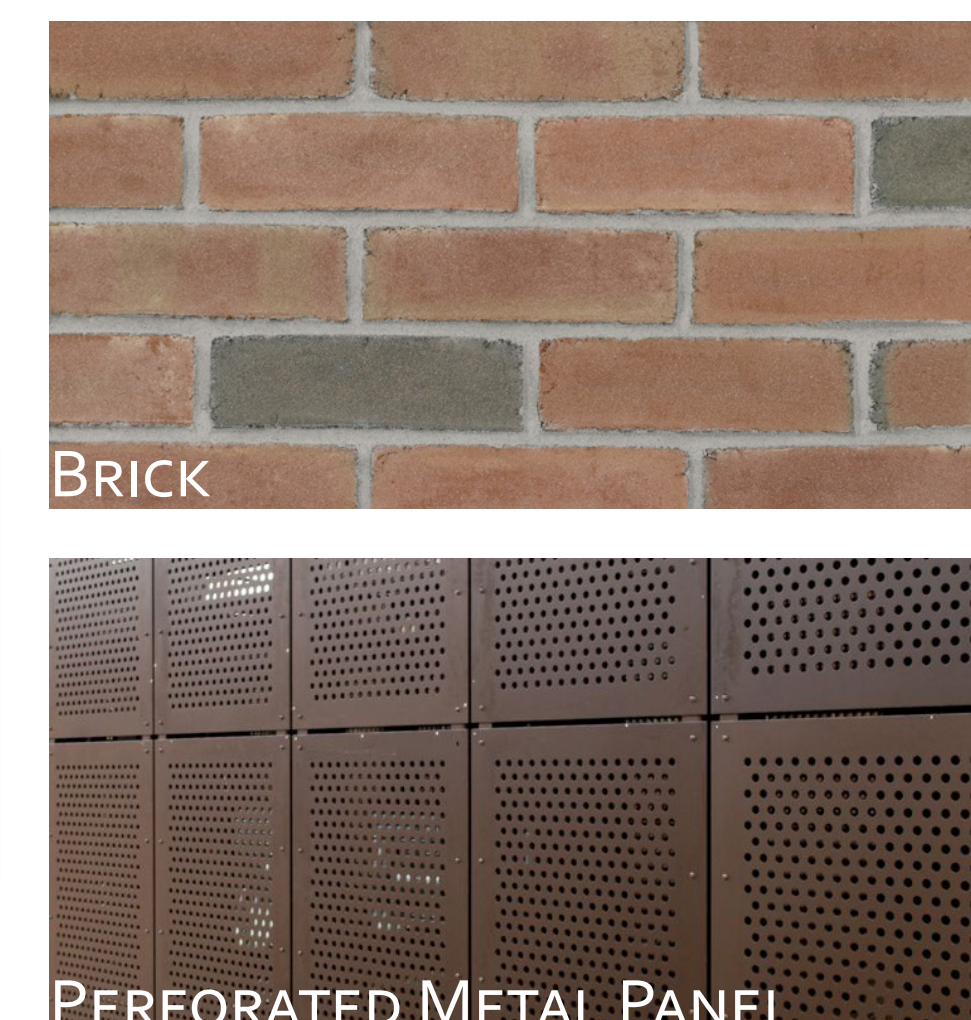
ACTIVE/PRIVATE



PRIVATE CONDITION

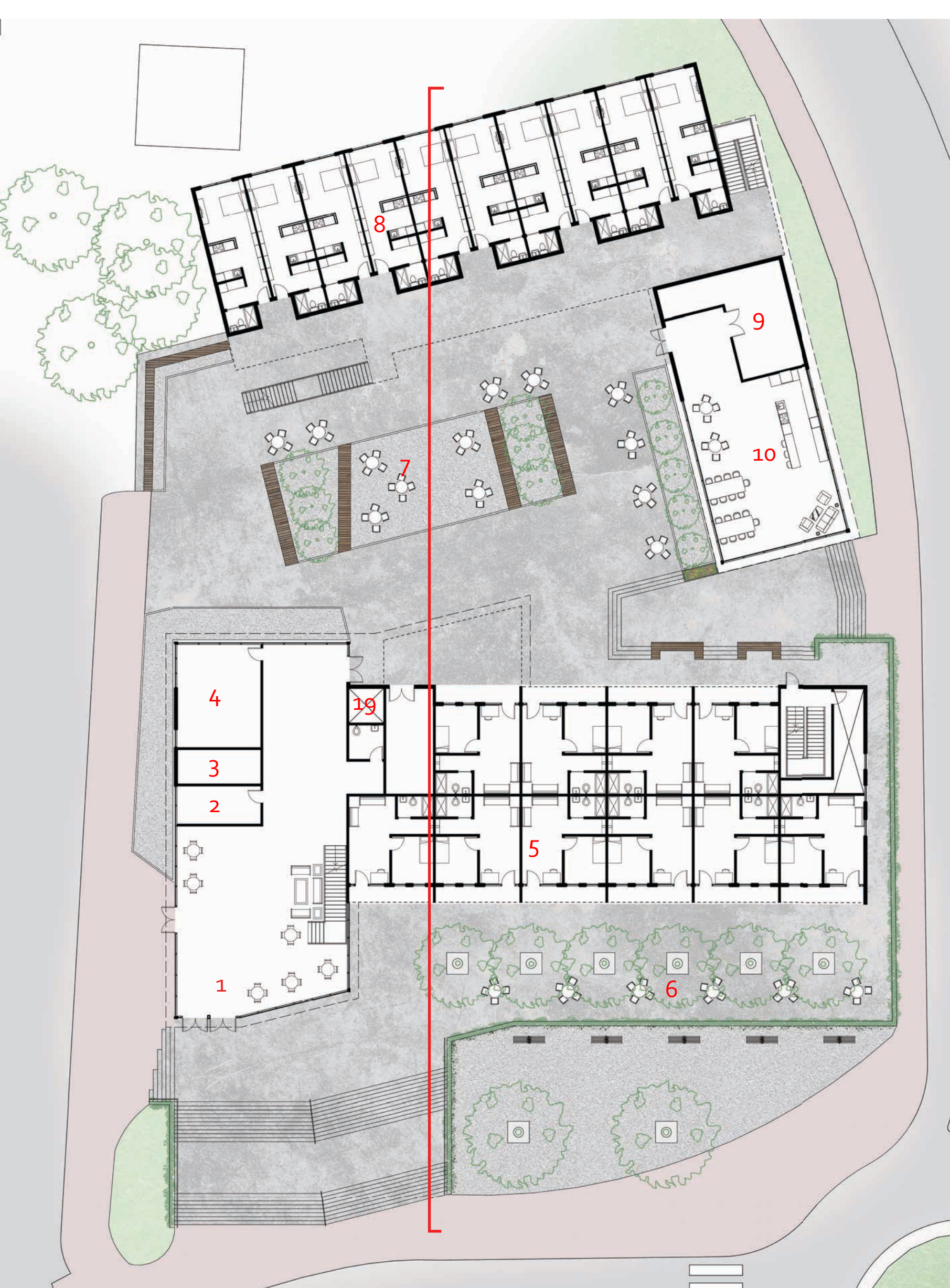
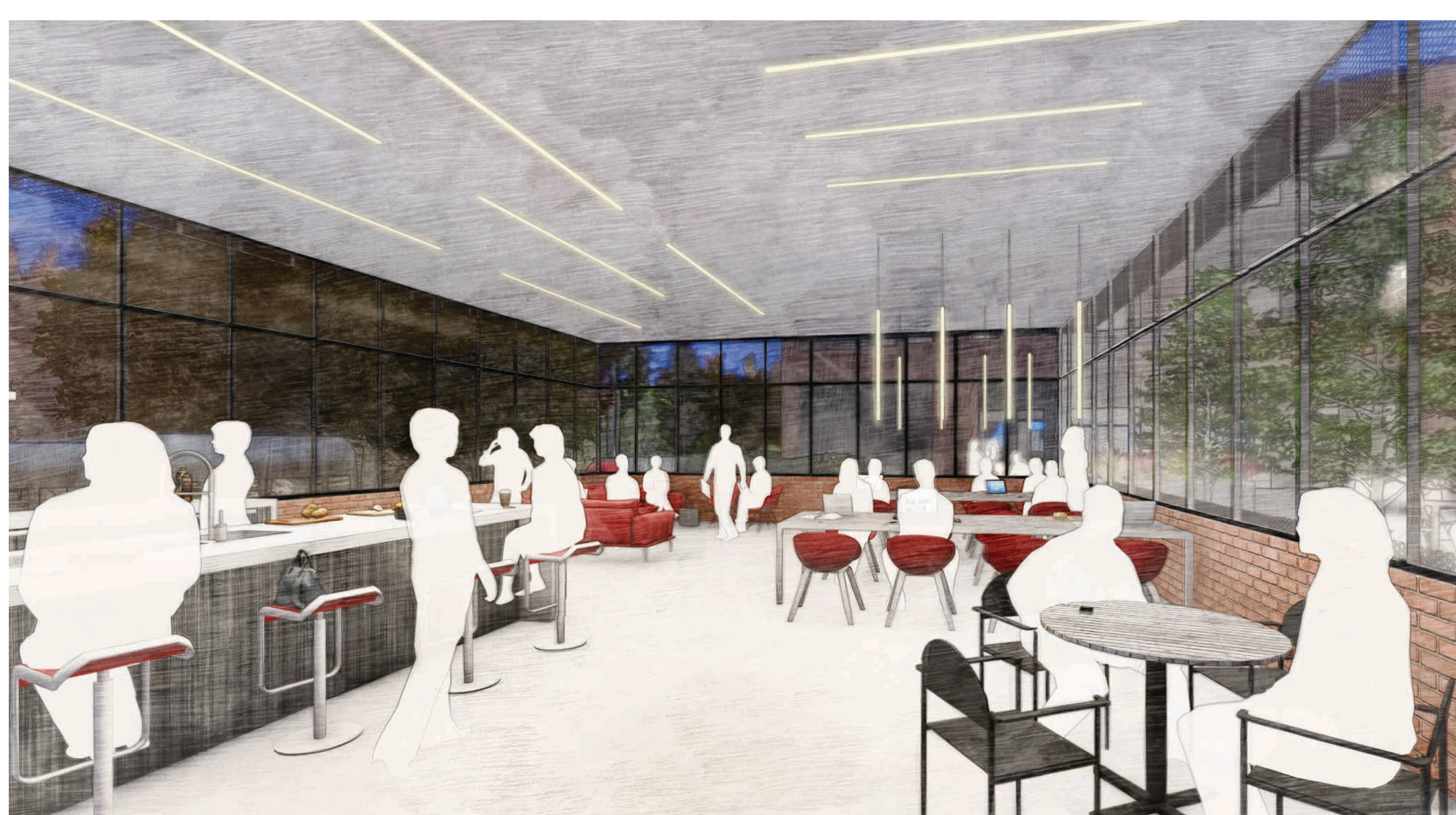


ACTIVE CONDITION

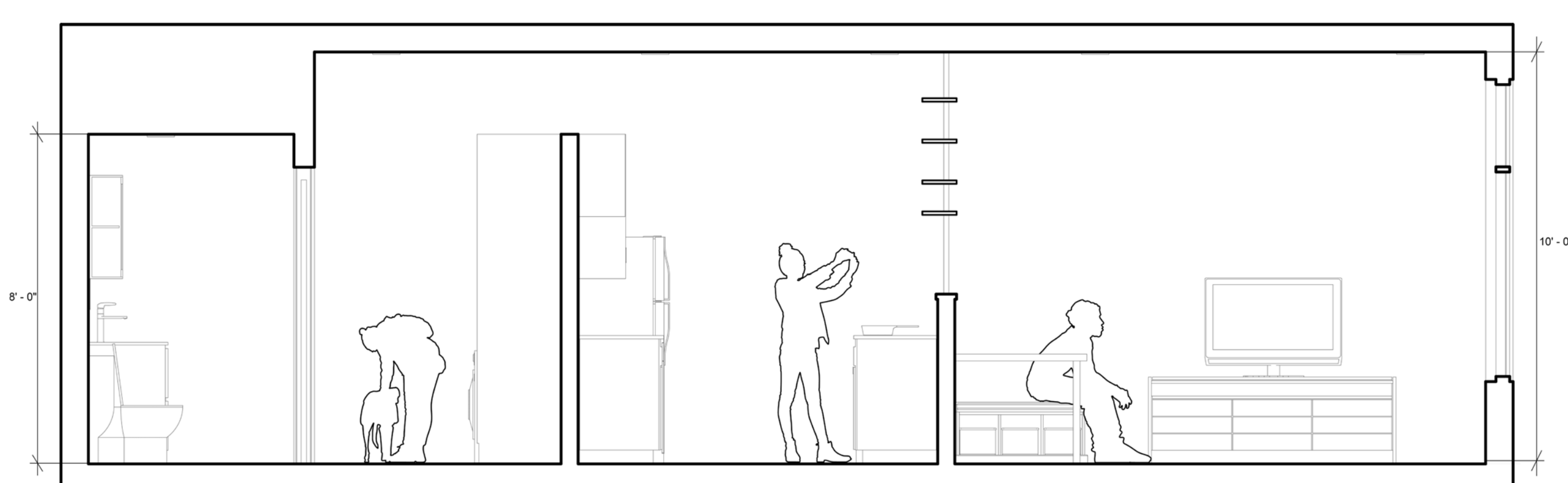
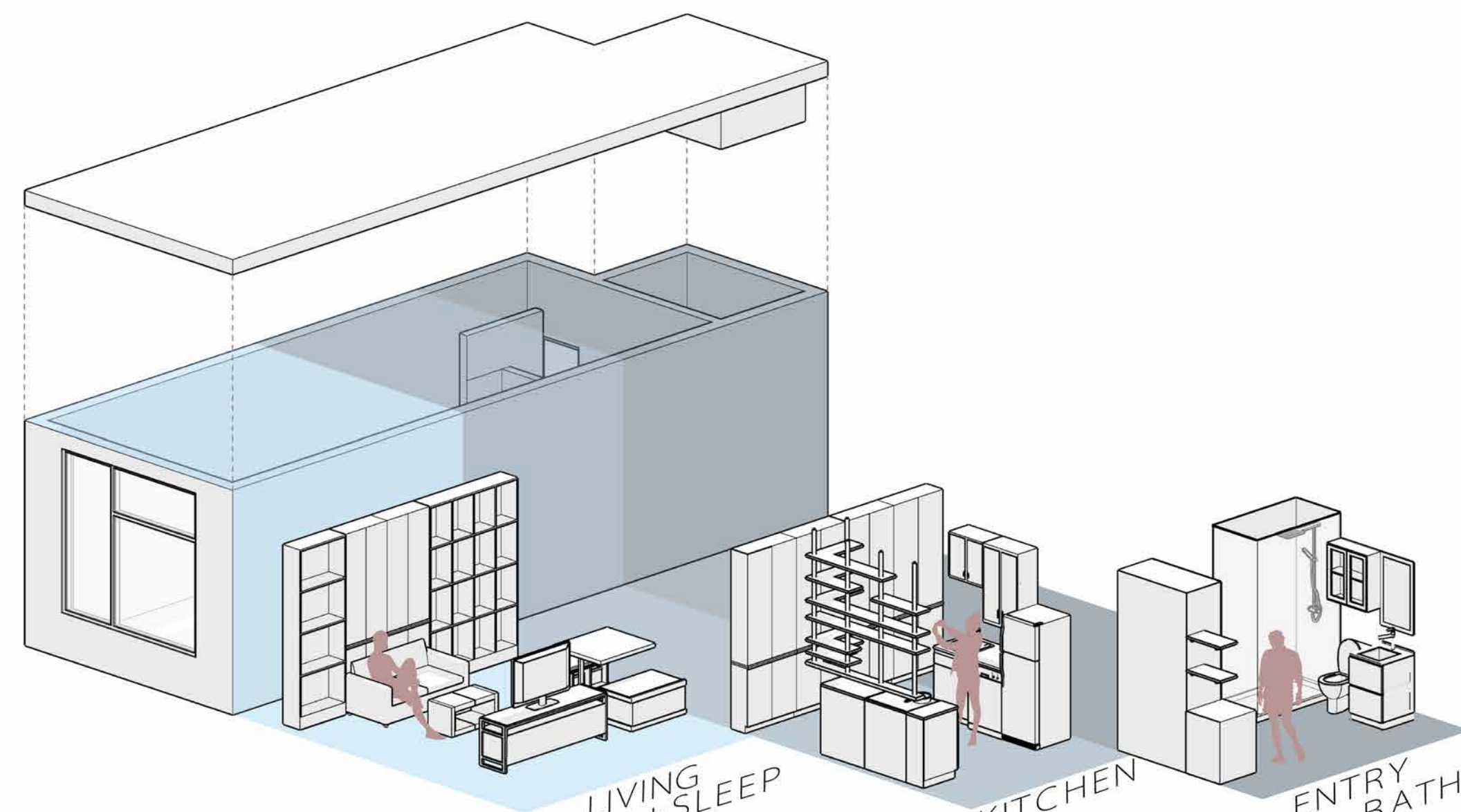
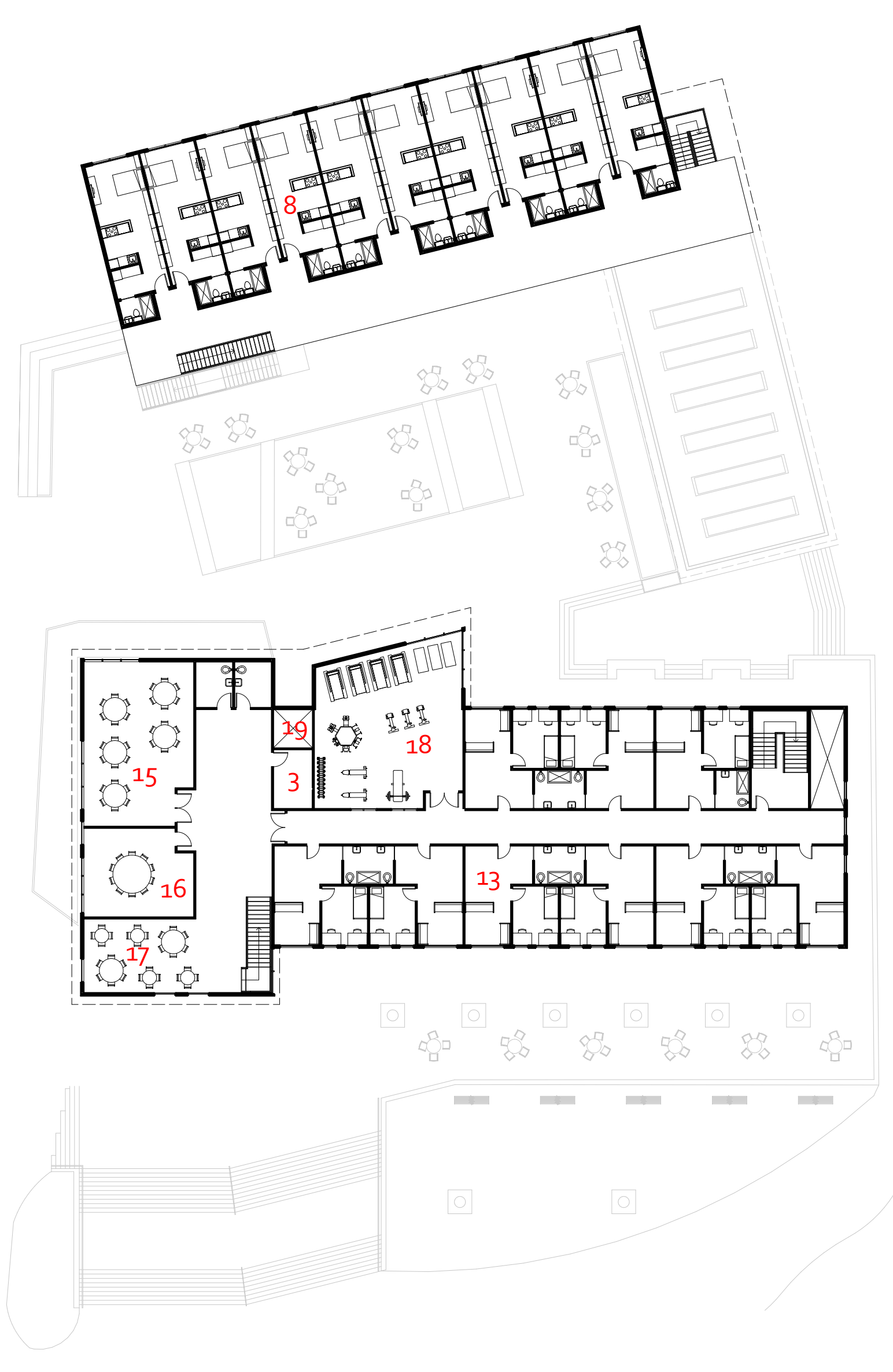
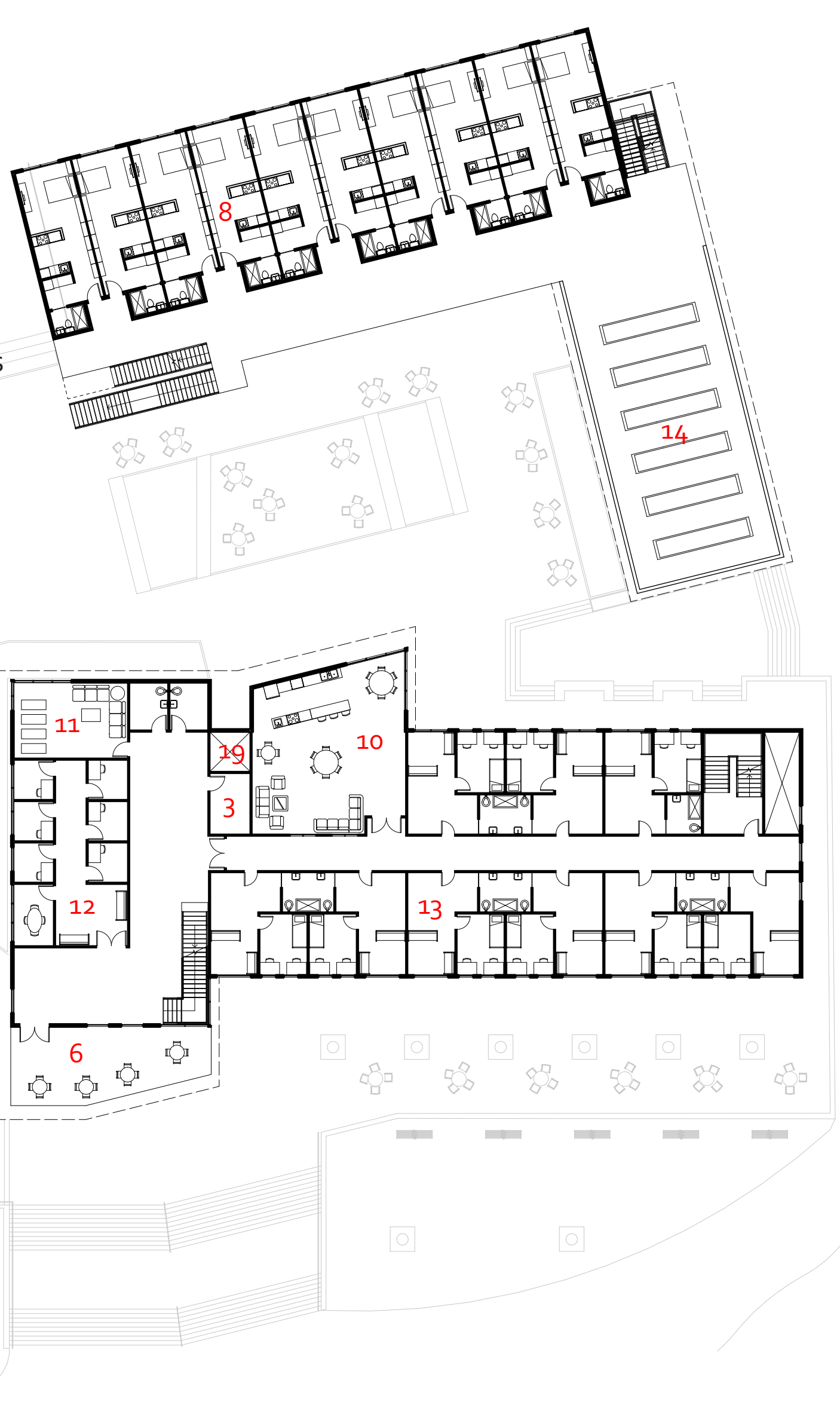


THE OBERLIN RESIDENCES + STUDENT RESOURCE CENTER

OBERLIN ROAD SITE | PAT MEIBURG



- 1 LOBBY
- 2 CAFE COUNTER
- 3 STORAGE
- 4 PACK PANTRY
- 5 APARTMENT
- 6 TERRACE
- 7 COURTYARD
- 8 MICRO-UNIT
- 9 LAUNDRY
- 10 KITCHEN/LOUNGE
- 11 REFLECTION ROOM
- 12 COUNSELING/OFFICES
- 13 DORM
- 14 ROOF GARDEN
- 15 CLASSROOM
- 16 CONFERENCE ROOM
- 17 COLLABORATION
- 18 FITNESS ROOM
- 19 ELEVATOR



- ENERGY EFFICIENT APPLIANCES
- LOW-FLOW FIXTURES
- COMMUNITY GATHERING
- URBAN AGRICULTURE
- SOLAR SHADING
- FITNESS SPACE
- COMMUNITY KITCHEN
- SECURE BIKE STORAGE
- GREEN WALL SYSTEM
- HIGH WALKABILITY

AFFORDABLE + SUPPORTIVE HOUSING FOR NC STATE

School of Architecture | College of Design | NC State University