



OBERLIN PARK - AFFORDABLE AND SUPPORTIVE RESIDENCE HALL - PK HENSEL

SITE PLAN - 1" = 40' - 0"

DESIGN INTENT

N.C. State University is in desperate need of supportive and affordable housing for both its traditional and non-traditional student population. This design hopes to provide an example of beautiful inclusive architecture that not only houses students, but provides a home and community that builds confidence and puts them on a path to success.

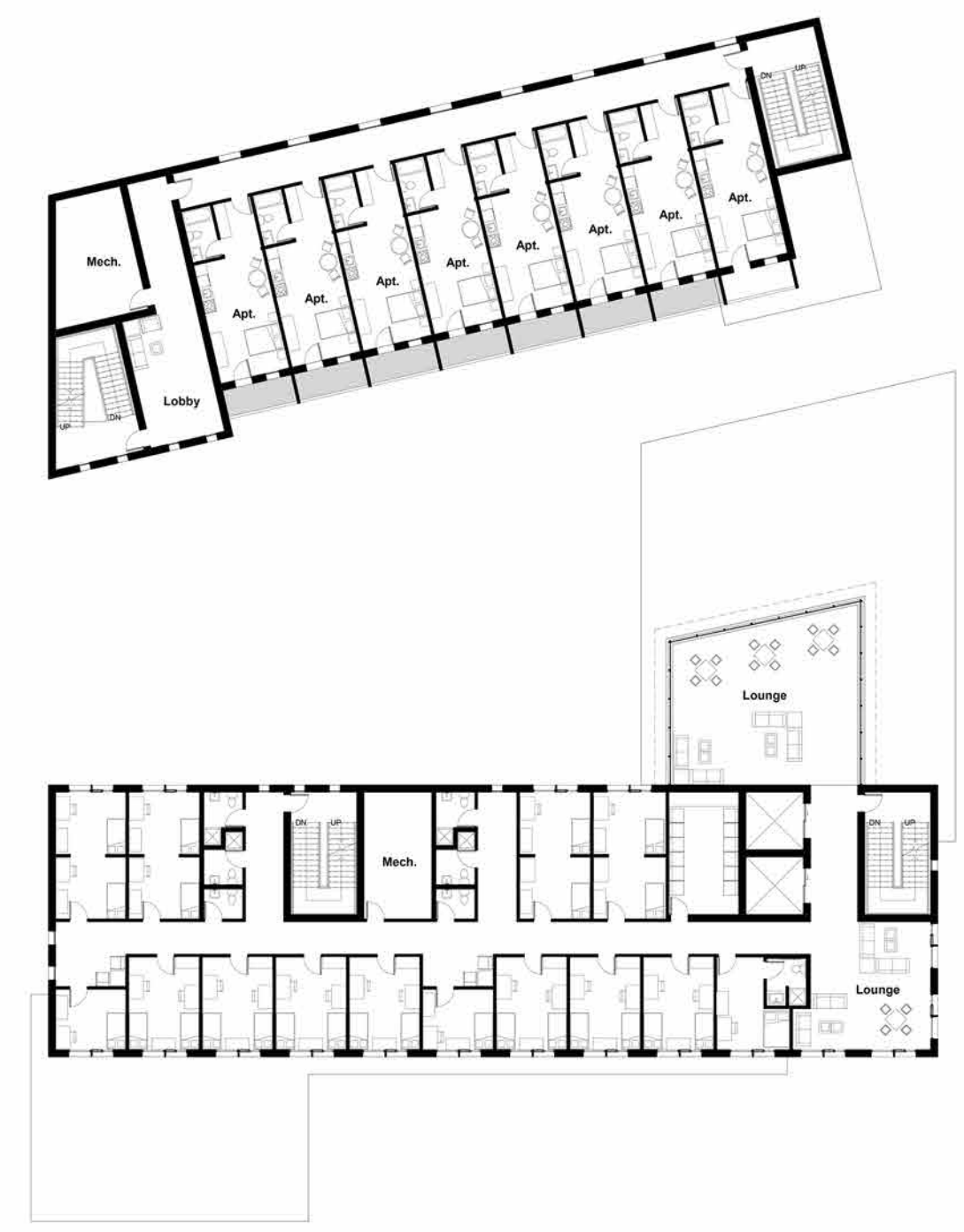
SITE RESPONSE

The Oberlin site is situated at the edge of both residential and commercial districts, each with its own scale and context. The architecture strives to link the two zones by creating a strong street edge facing Hillsborough Street, while remaining open and inviting towards the Cameron Park neighborhood.

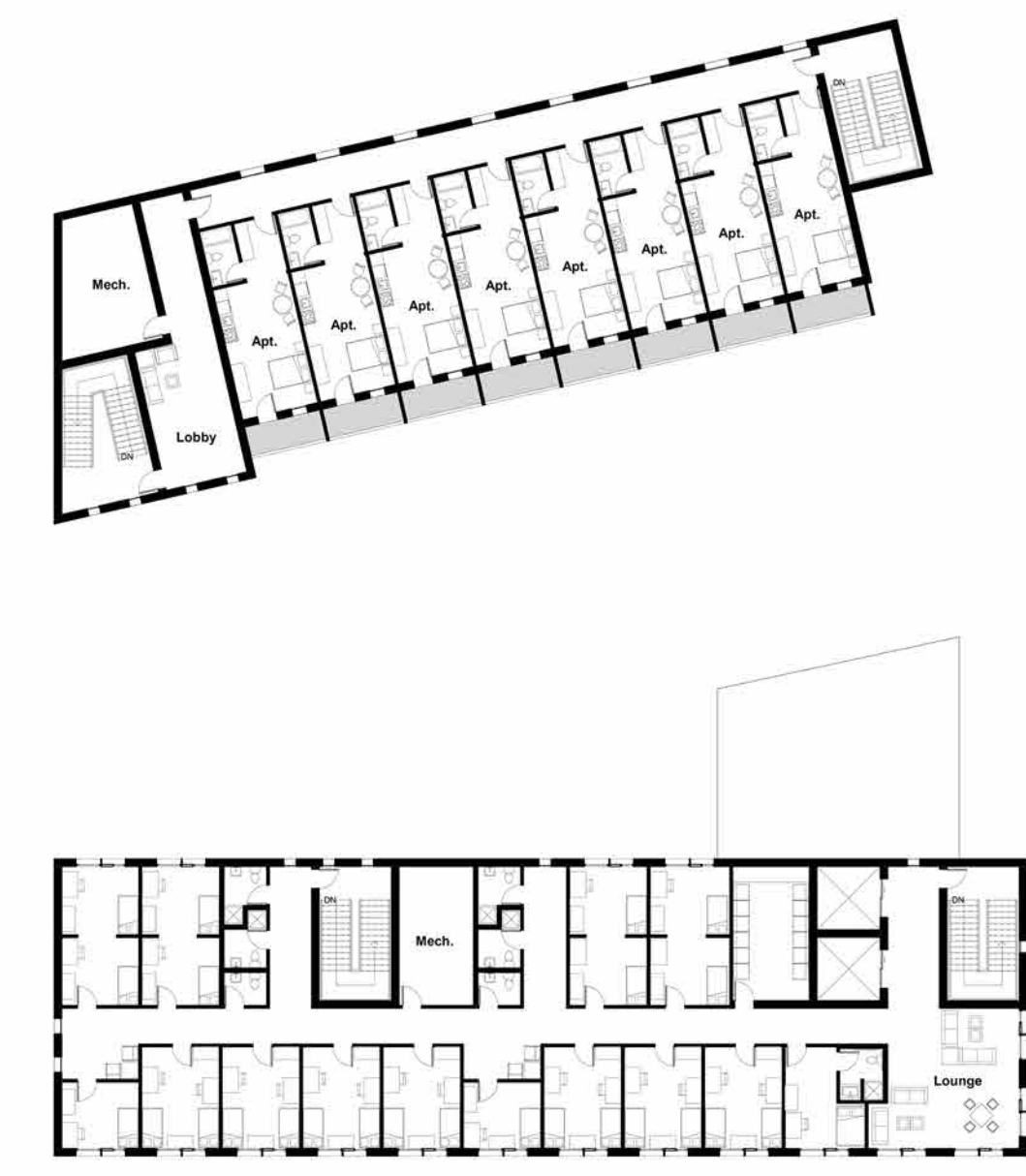
PROGRAM	SQUARE FOOTAGE
Cafe	1820 sq. ft.
Food Pantry	860 sq. ft.
Service Hub	1000 sq. ft.
Support Offices	875 sq. ft.
Community Kitchen	2000 sq. ft.
Resident Lounges	2600 sq. ft.
Bike Storage	750 sq. ft.
Micro Apartments	8050 sq. ft.
Single Units	540 sq. ft.
ADA/Flex Units	340 sq. ft.
Double Units	4800 sq. ft.
Resident Courtyard	6000 sq. ft.
Public Courtyards	3500 sq. ft.



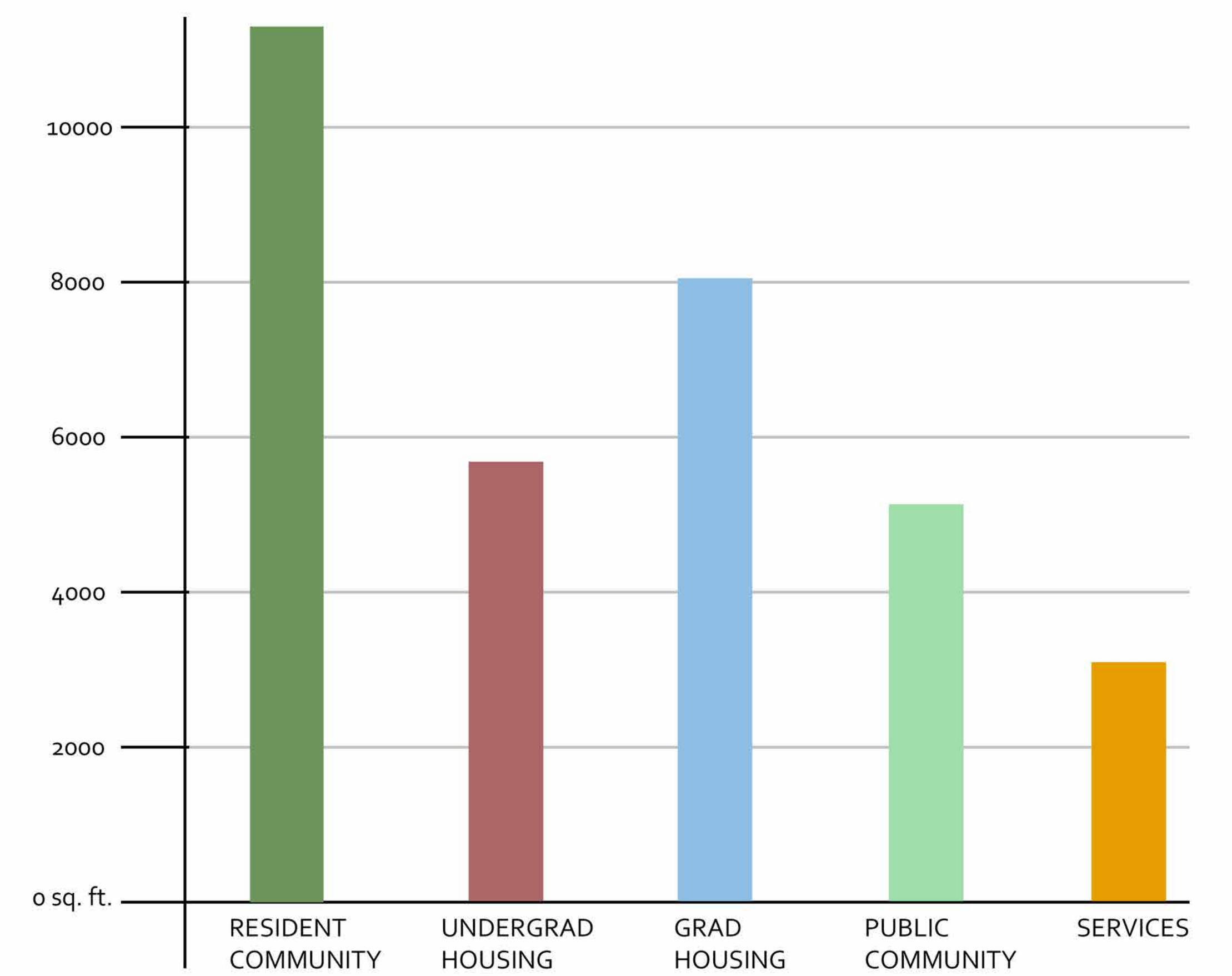
FIRST FLOOR PLAN - 1" = 30' - 0"



SECOND FLOOR PLAN - 1" = 30' - 0"



THIRD FLOOR PLAN - 1" = 30' - 0"



- 1. FARM TO TABLE CAFE
- 2. DEEP OVERHANGS
- 3. NORTH/SOUTH FACING GLAZING
- 4. LOUVERED WINDOWS
- 5. HIGH PERFORMANCE GLAZING
- 6. HIGH EFFICIENCY FIXTURES
- 7. LOW VOC PAINTS AND SEALANTS
- 8. DROUGHT RESISTANT LANDSCAPING
- 9. BIKE STORAGE
- 10. PHOTOVOLTAICS
- 11. GROW WALL S
- 12. STORM WATER COLLECTION SYSTEM

