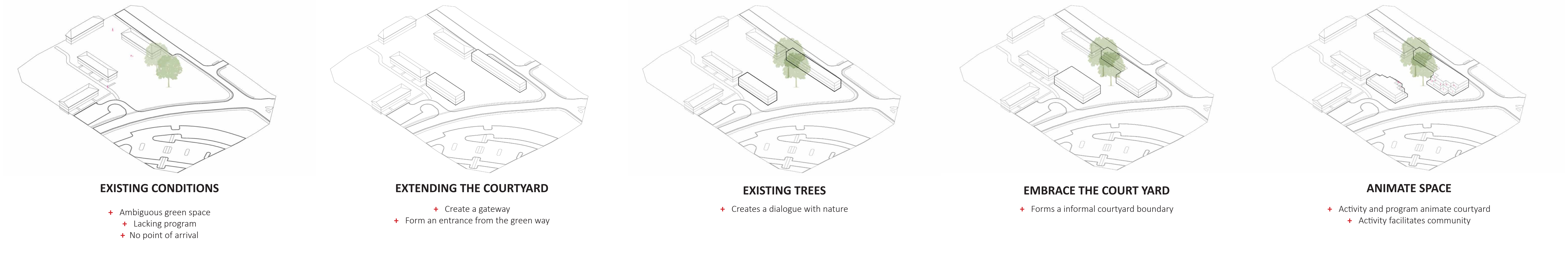
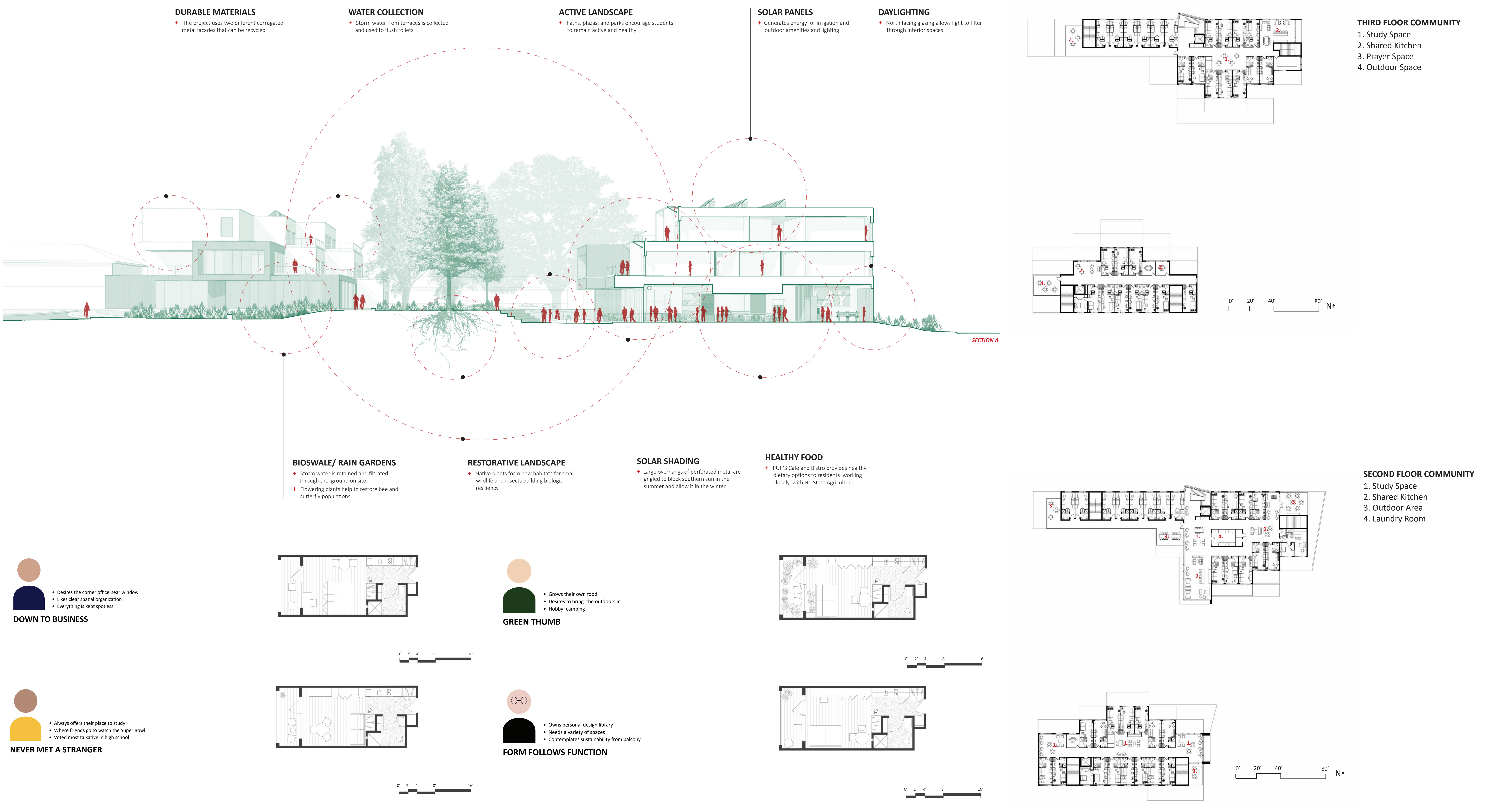


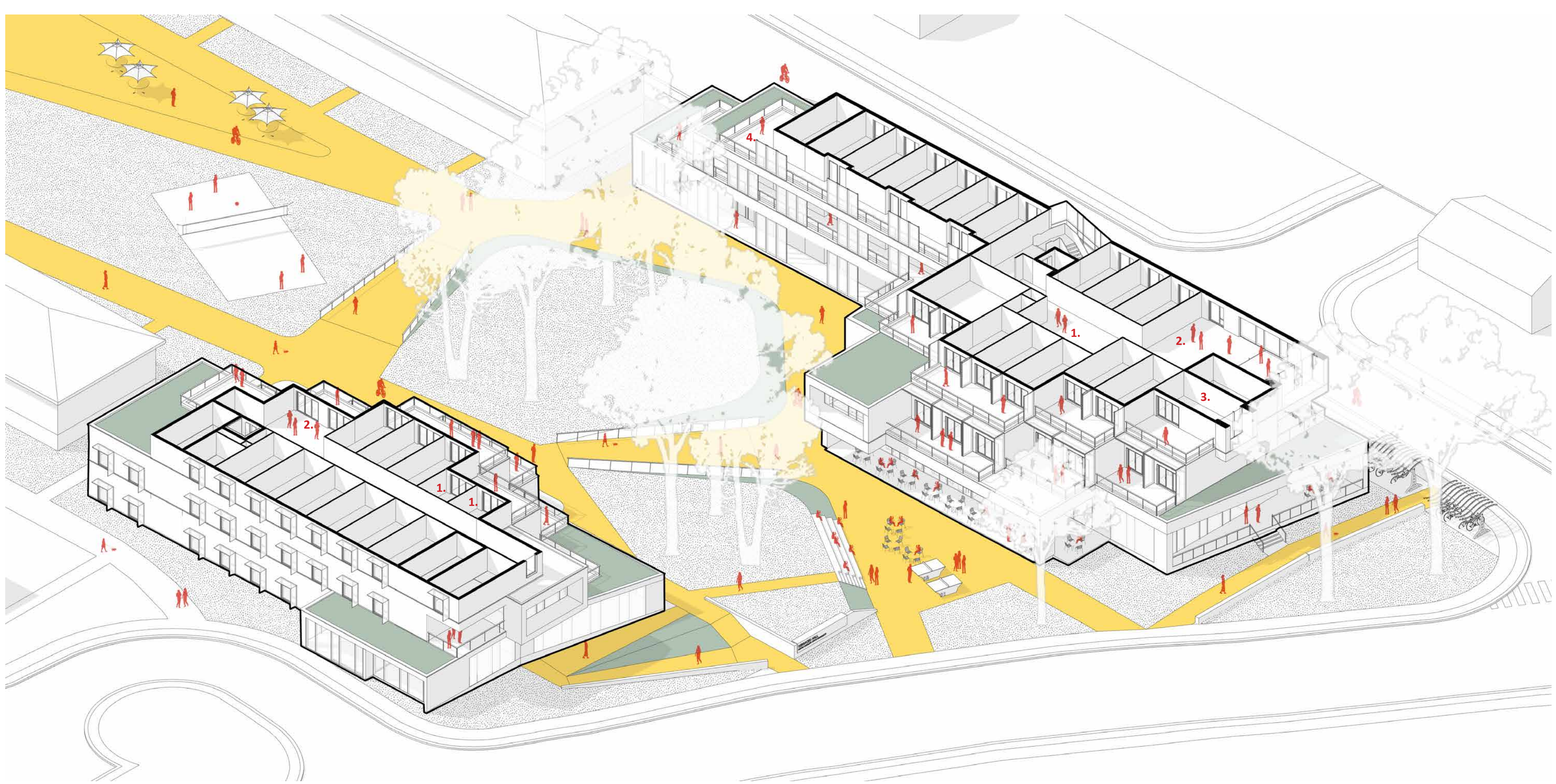
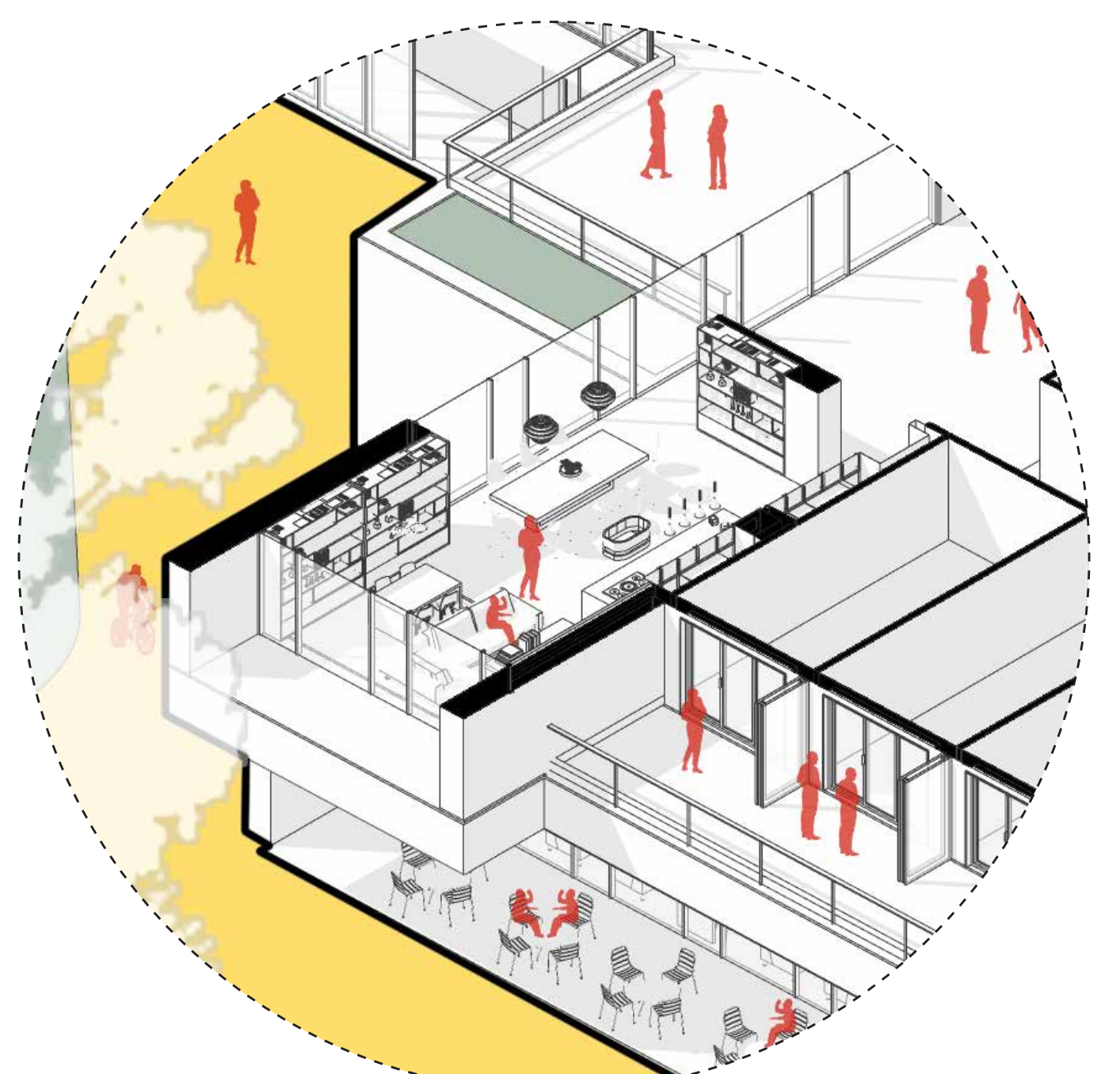
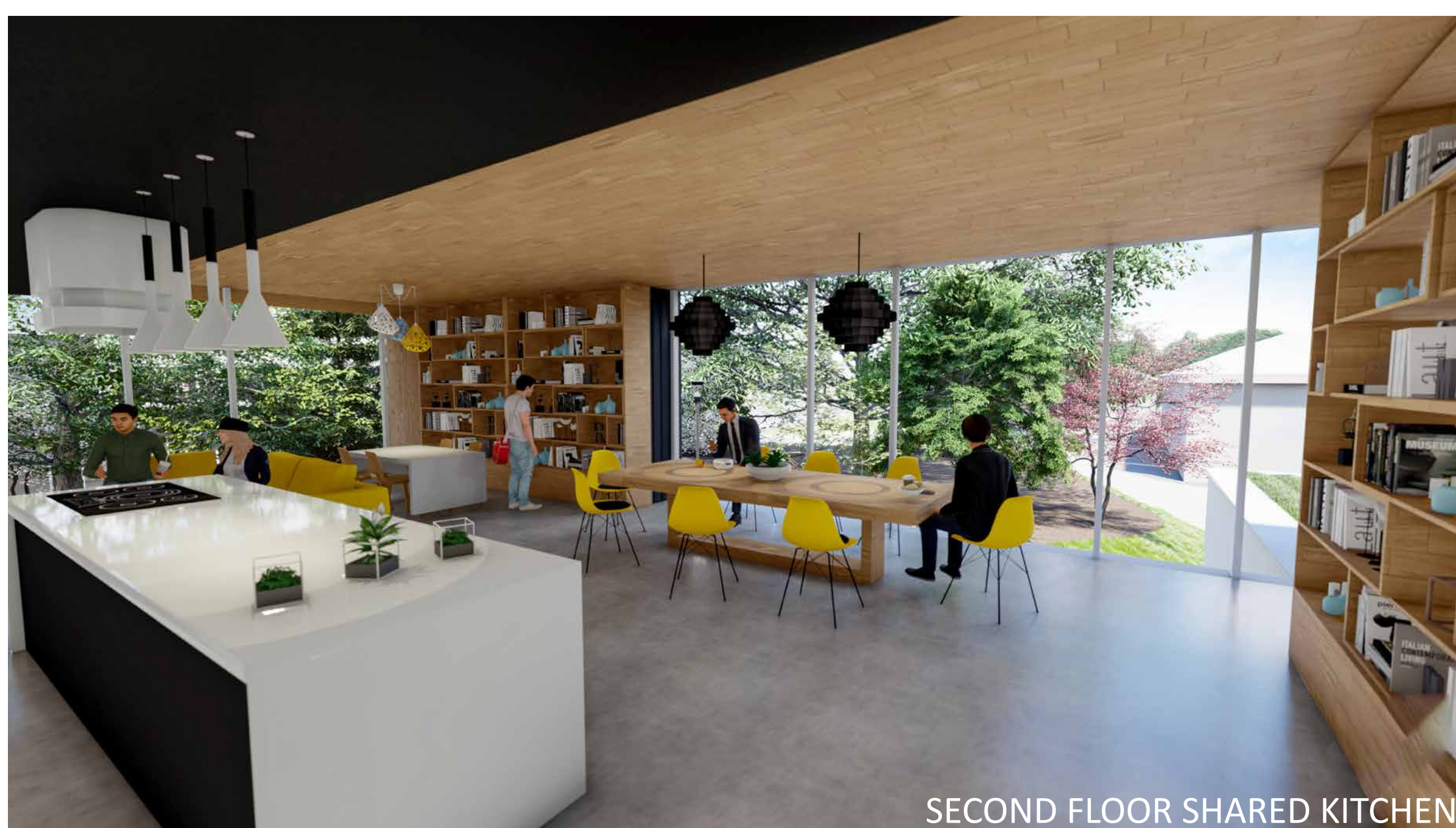
VISION STATEMENT:

Terraced Hall, defines a gateway for physically and socially isolated King Village. It provides innovative and affordable housing options that foster communities on a variety of scales from a central common area to shared spaces on each floor. Pack Lounge, the central hub for both King Village and Wolf Village, features Pup's Bistro, a C-Store, and active plaza that connects seamlessly into the regenerated landscape for residents to collaborate, study, and socialize. Similar to Dickerson Dormitory by Deborah Berke, on residential floors, apartments are clustered around study spaces and shared kitchens. Additionally, terraced balconies are shared by groups of two or three apartments which also serves to activate the plazas and landscape below. Overall, each space is designed to be flexible and adaptable, including the dorm rooms and studios.

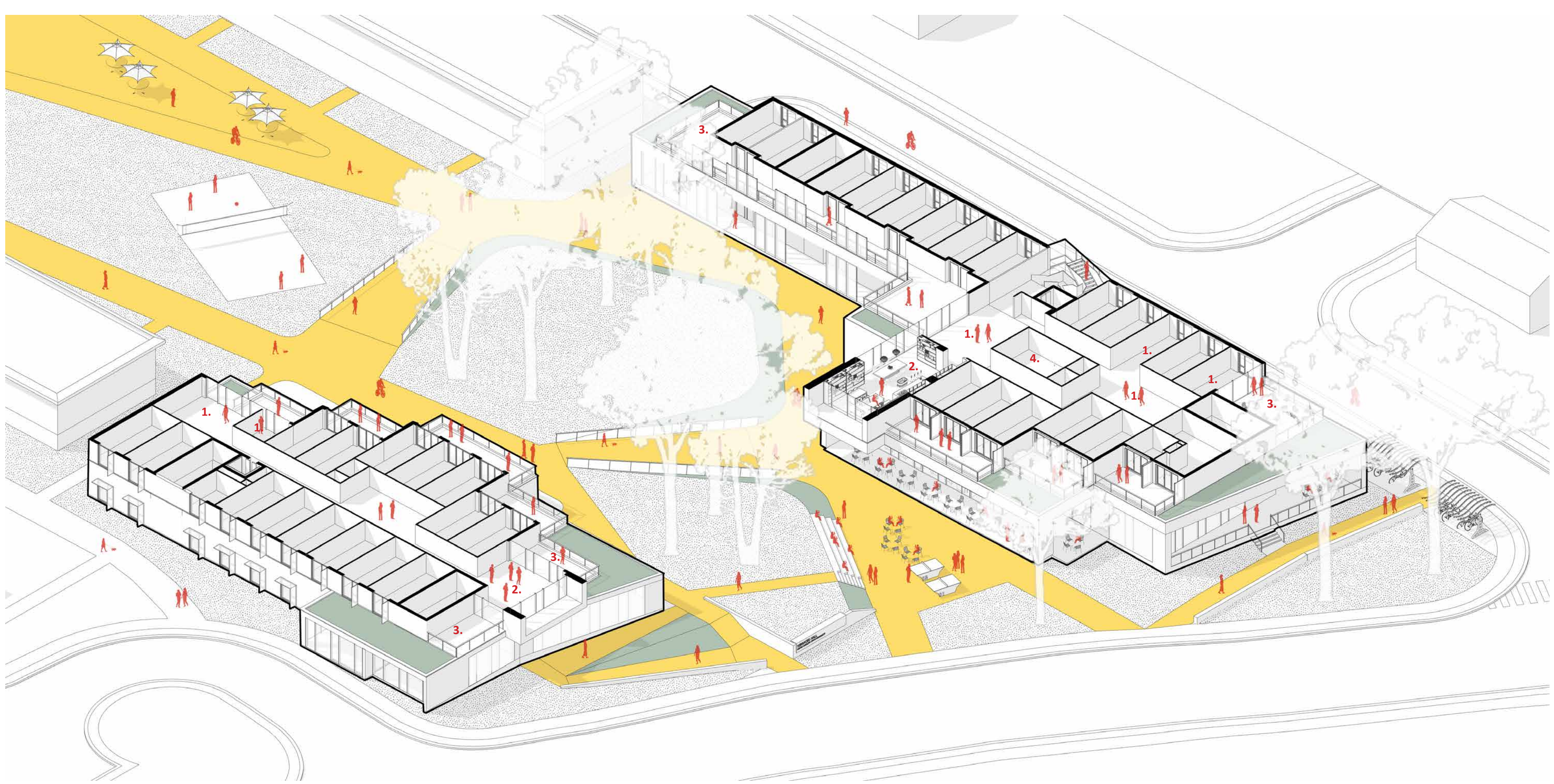


TERRACED HALL : COMMUNITY CENTERED LIVING - JOSH BASHAM - KING VILLAGE

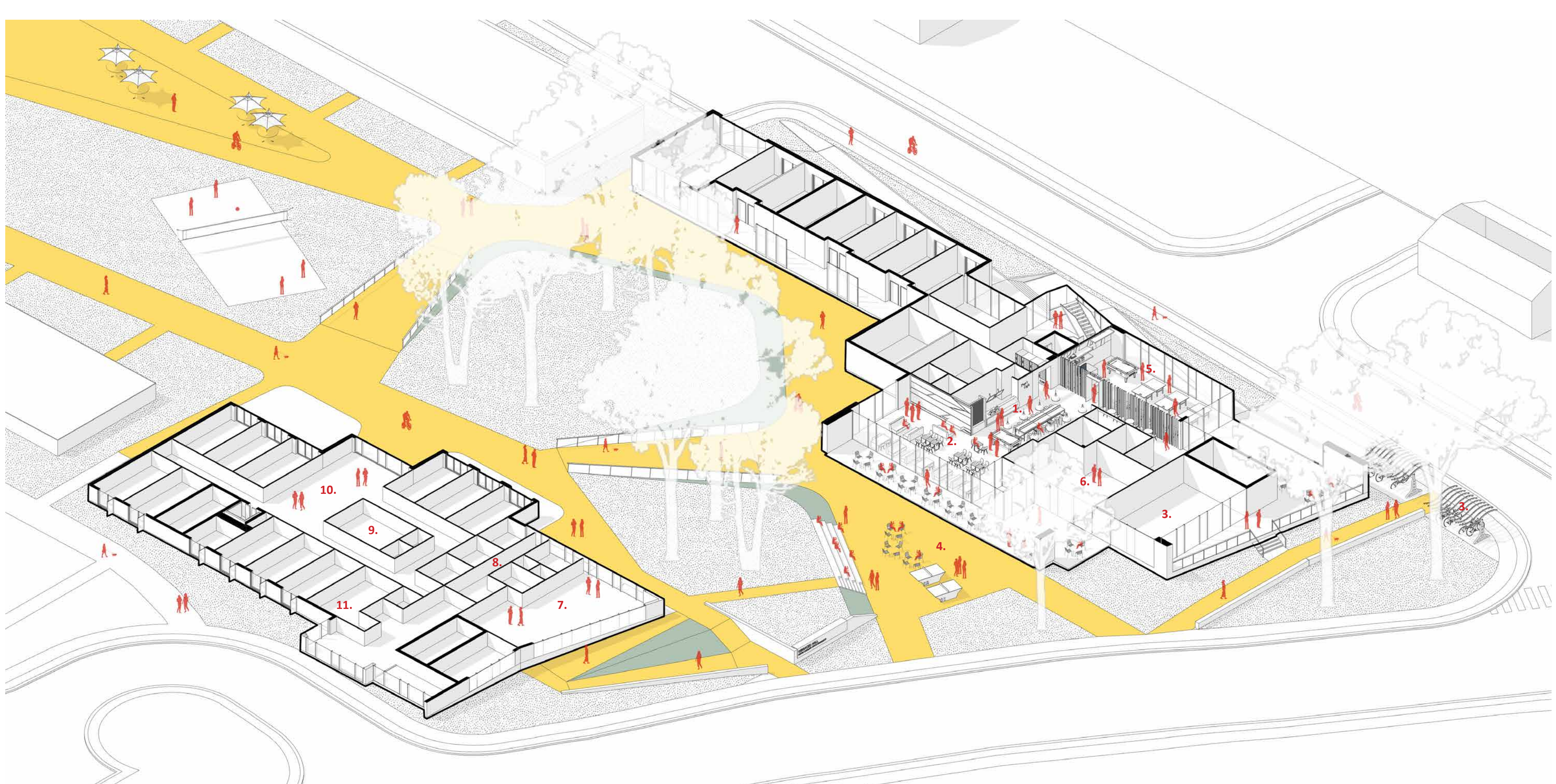




THIRD FLOOR COMMUNITY
1. Study Space
2. Shared Kitchen
3. Prayer Space
4. Outdoor Space



SECOND FLOOR COMMUNITY
1. Study Space
2. Shared Kitchen
3. Outdoor Area
4. Laundry Room



GROUND FLOOR COMMUNITY
1. Pup's Bistro
2. Pup's Lounge
3. Bike Shop/ Storage
4. Plaza
5. Game Room
6. C- Store/ Food Pantry
7. Library
8. Social Services
9. Laundry Room
10. Shared Kitchen
11. Mail