

Oberlin Hall aims to integrate within the contexts, express the student supportive services program, and animate the public spaces to facilitate social interaction and destigmatize affordable and supportive housing.

Integrate with the site and its contexts to provide innovative housing that incorporates a range of social spaces for residents and the public to interact.

Express the program, materials, forms and spaces of the architecture to create a building that announces its social and supportive roles.

Animate spaces and places to create flexibility, adaptability and personalization of use and function.

1. COMMUNITY

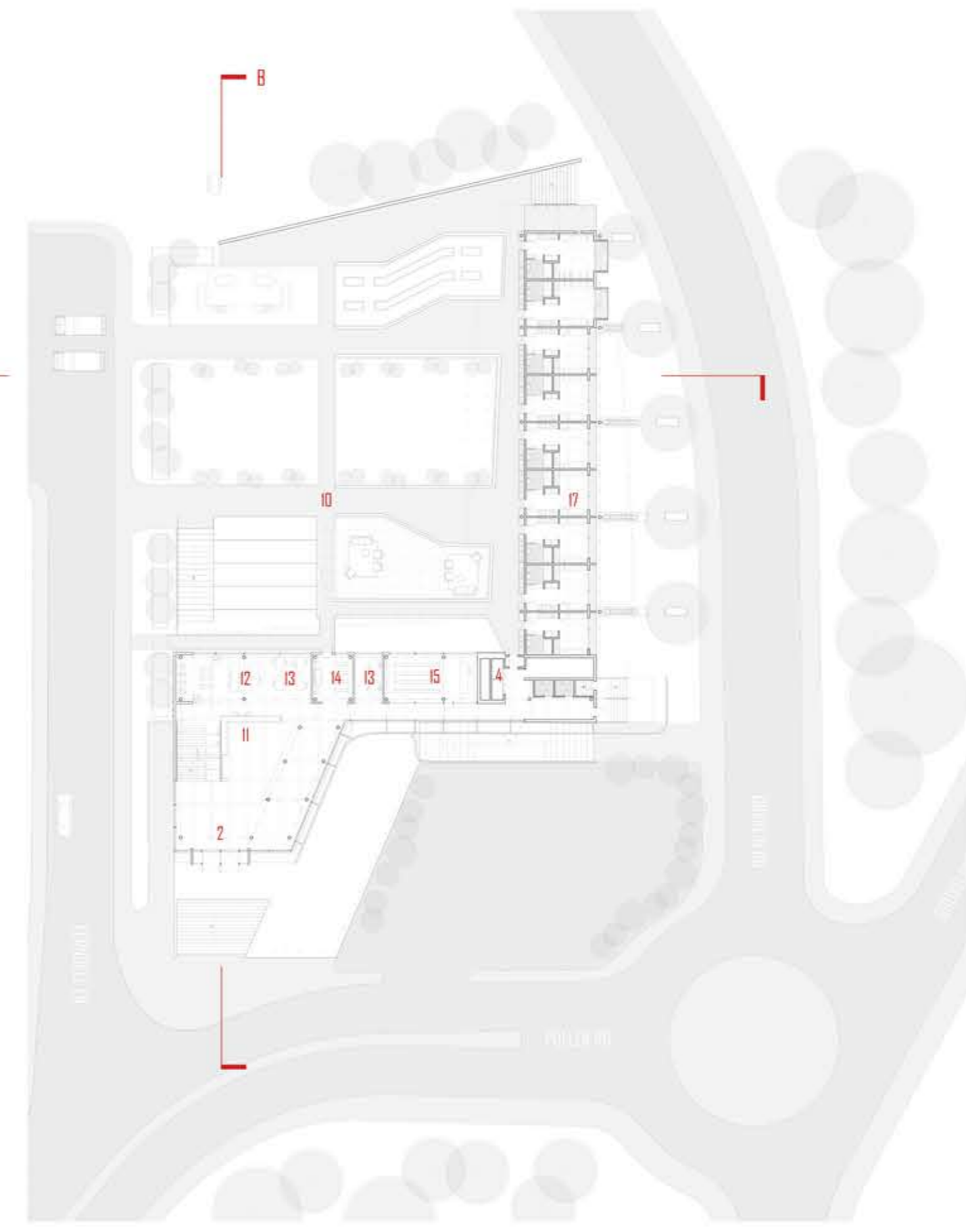
- Reception
- Case worker offices
- Counseling rooms
- Cafe + Pantry
- Digital media + Maker space
- Classrooms + Learning space
- Common rooms + Study spaces
- Gaming room
- Shared kitchens
- Wellness space
- Prayer space
- Conference rooms

2. RESIDENTIAL

- Micro Apartments 10 400 SQ FT
- Multi Family Apartments 2 800 SQ FT
- Two Bed Suite Style Dorms 10 800 SQ FT
- Three Bed Suite Style Dorms 8 800 SQ FT

3. EXTERIOR

- Flexible courtyard
- Outdoor theatre + Classroom
- Retail space + Pop-up market
- Covered bike storage
- Seating



- 1 RETAIL
- 2 ENTRY
- 3 STAIRS
- 4 ELEVATOR
- 5 STORAGE
- 6 CLASSROOM
- 7 BIKES STORAGE
- 8 BIKE REPAIR
- 9 OUTDOOR THEATRE
- 10 COURTYARD
- 11 RECEPTION
- 12 MAKER SPACE
- 13 CASE OFFICES
- 14 HALL
- 15 PANTRY/STORE
- 16 RESTROOM
- 17 MICRO APARTMENTS
- 18 WELLNESS
- 19 GAMING ROOM
- 20 COMMUNITY ROOM
- 21 THREE PERSON SUITE
- 22 SHARED KITCHEN
- 23 TWO PERSON SUITE
- 24 MULTI FAMILY UNIT
- 25 PRAYER SPACE
- 26 STUDY ROOM
- 27 CONFERENCE ROOM
- 28 VIEWING PLATFORM

