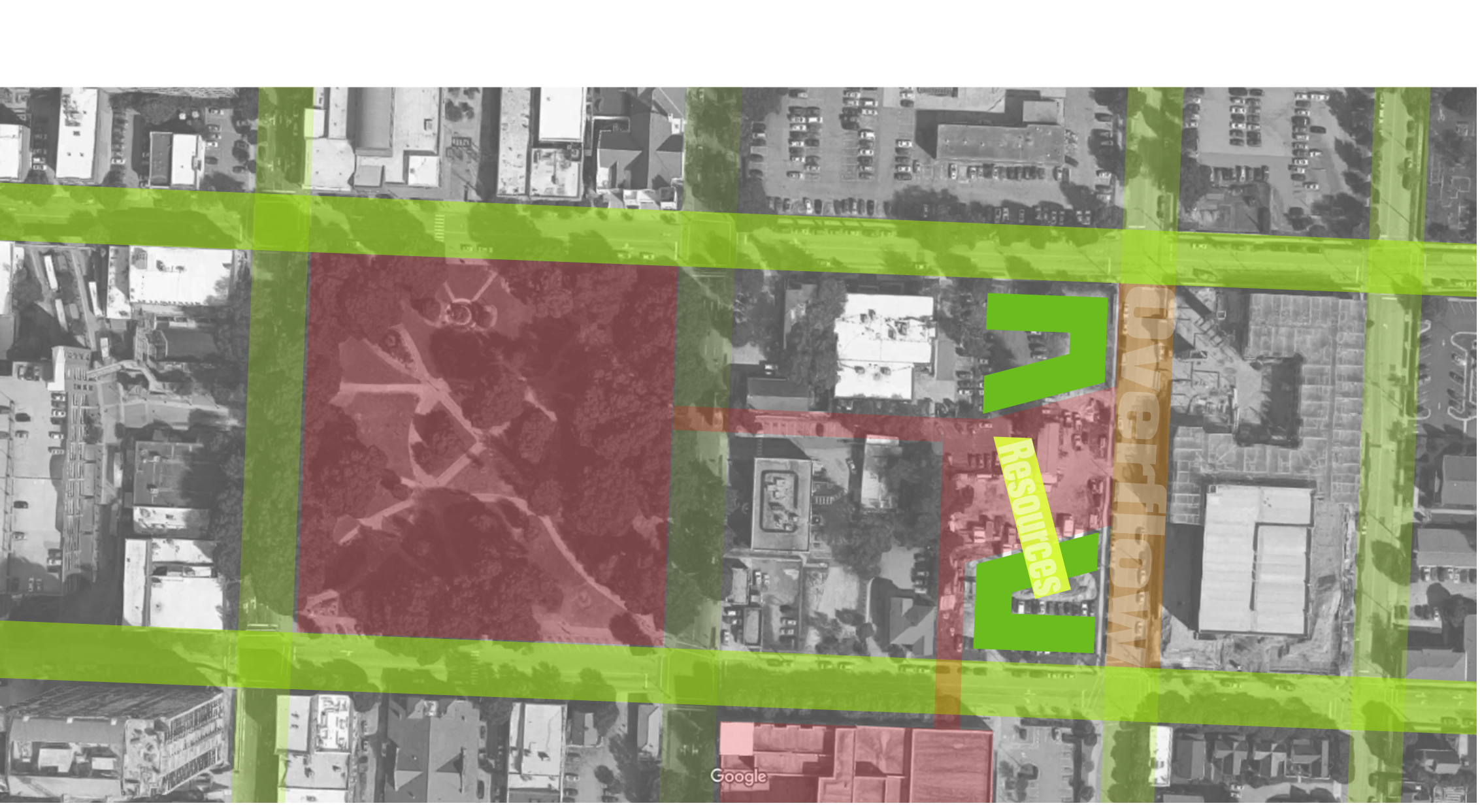
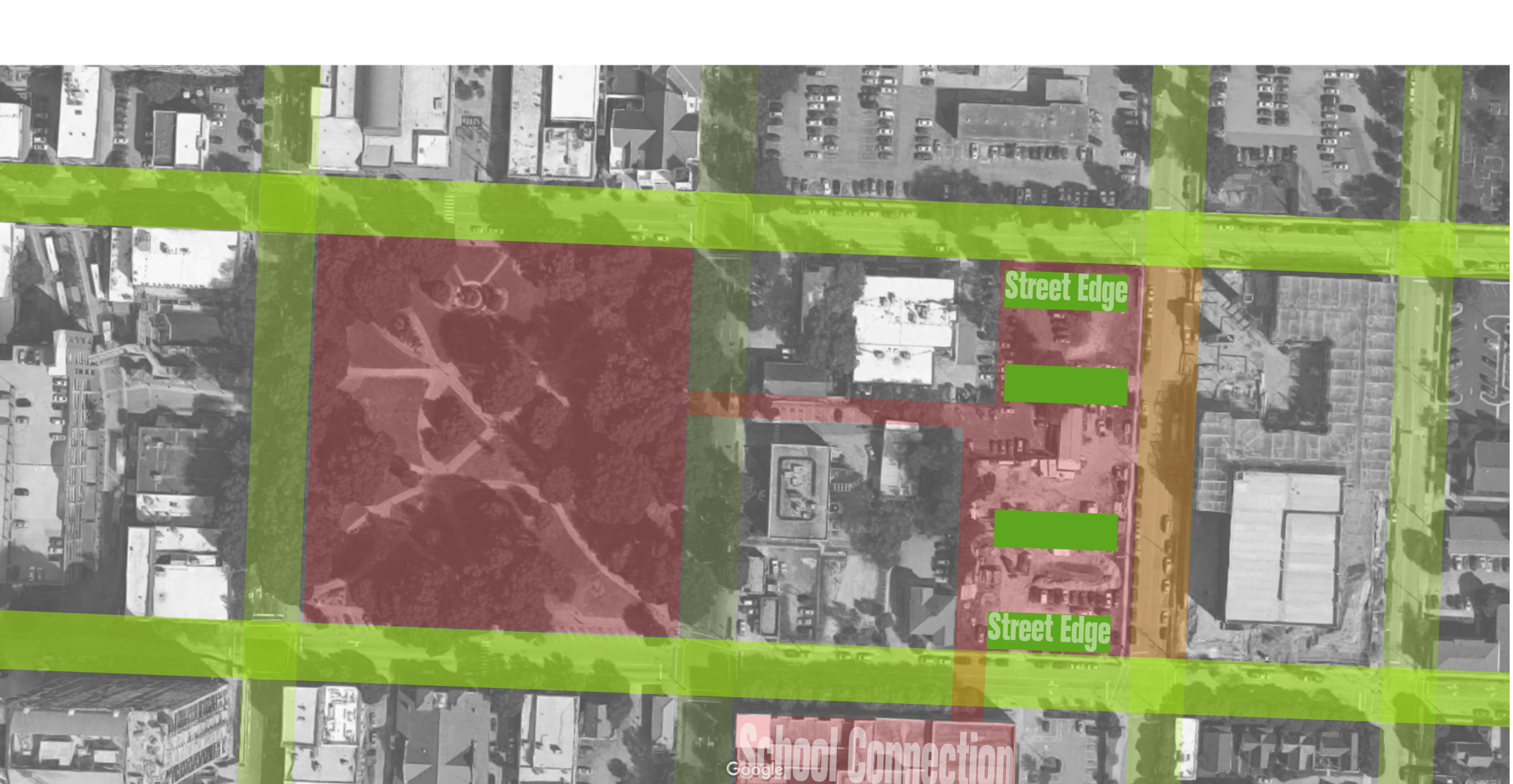


# A HUB FOR FOLK MUSIC

ZACHARY BRADSHAW

NGSU | ARC503 TOM BARRIE | FALL 2016



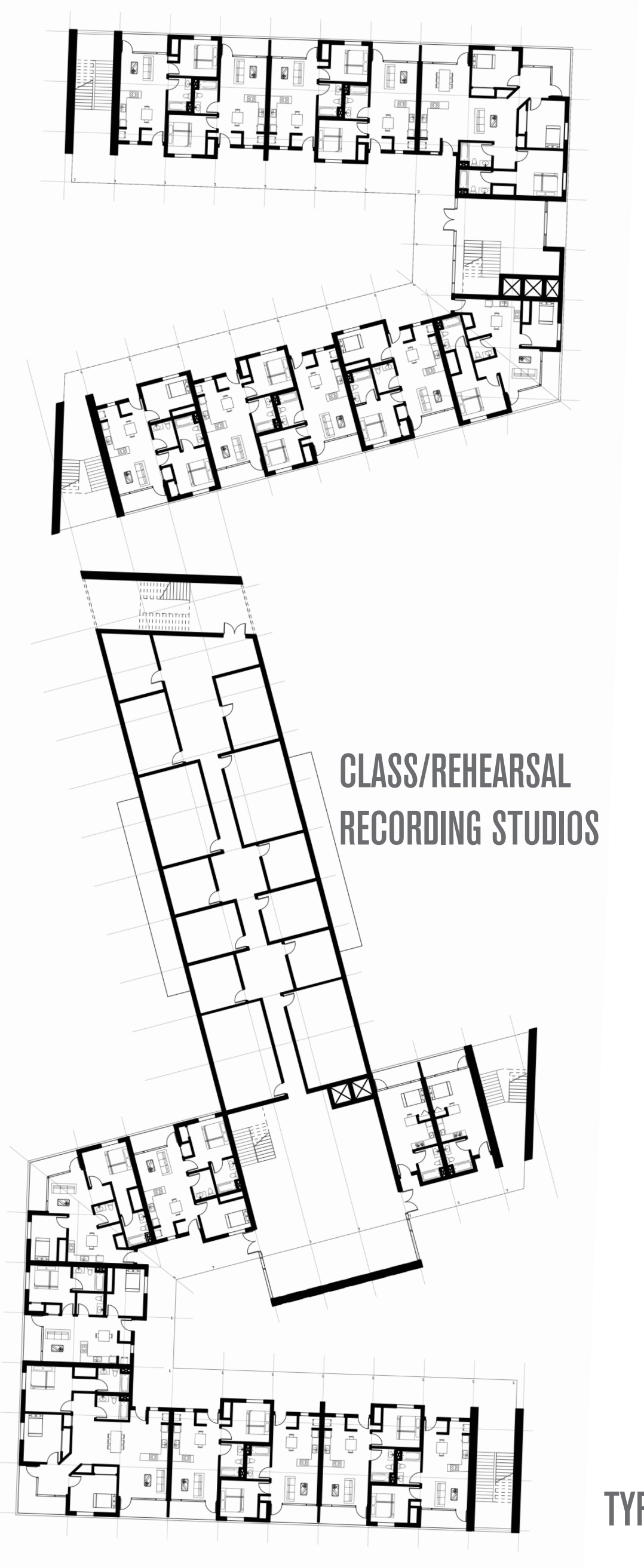
## WHAT'S THE BIG IDEA?

### PROJECT STATEMENT

Folk music is deeply tied to the culture of a community, and has grown, as such, in many diverse manners. Starting artists learn from their predecessors and experiment anew to develop the music further while preserving what defines the genre. To foster this cultural aspect, this project aims to provide a multitudinous variety of spaces for a community developed around folk music to practice, teach, and perform. This space will serve as a hub from which the culture developed around the music will disseminate, providing resources for Pinecone's members both in terms of venues and practice spaces, while fostering interaction with the local community in many shared spaces and small public venues. For individuals seeking to simply practice privately, or who are uncomfortable in front of a large crowd, more intimate spaces will encourage these new talents to emerge. Public venues at multiple scales will provide more large scale options, and the opportunity to spill out into the street could even encourage small festivals throughout the year. The project becomes a matter of holding the pedestrian street edges, while opening up the interior of the site to the public.

## FLOOR PLANS

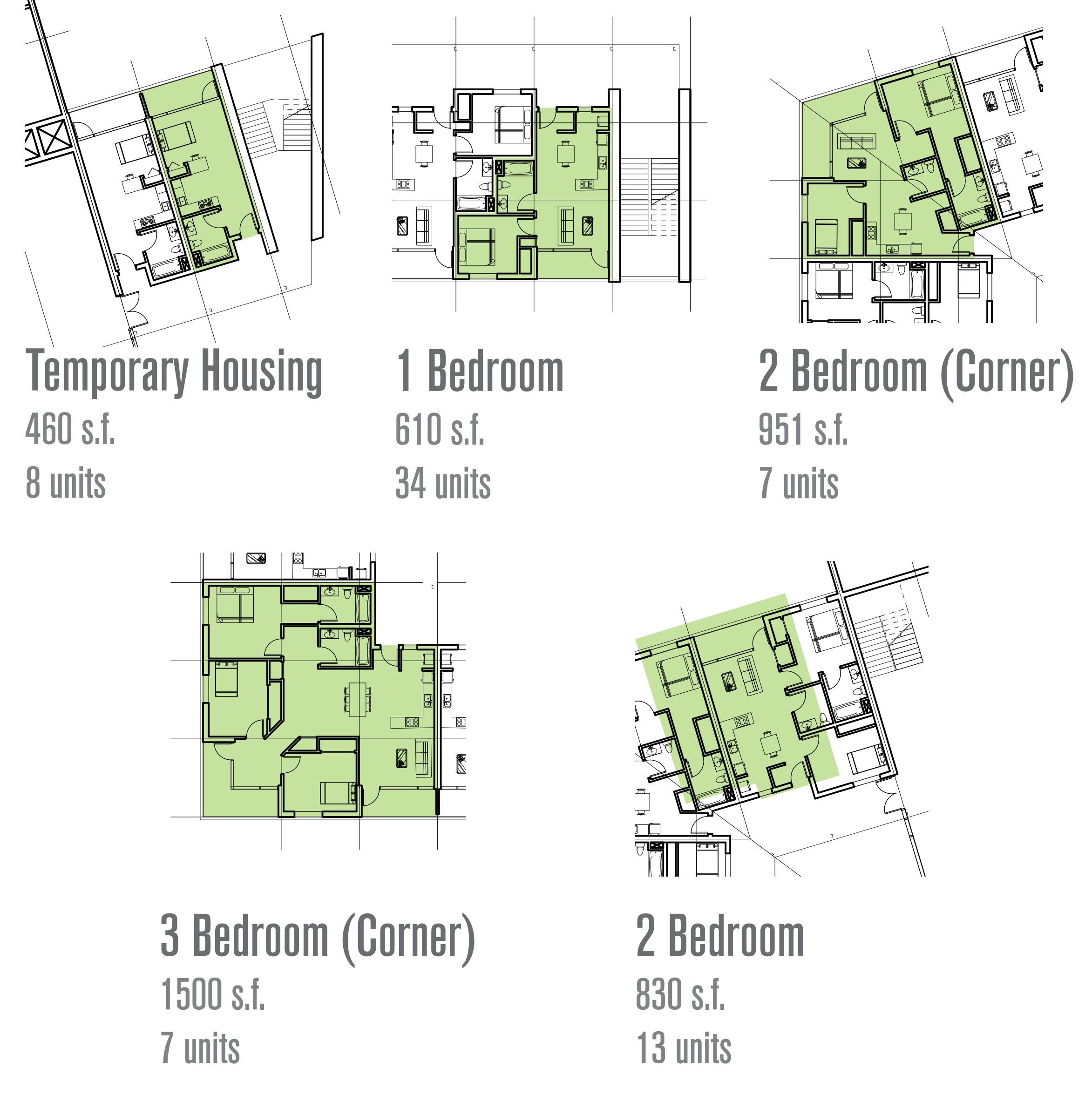
1/8" = 1'



TYPICAL FLOOR PLAN

## UNIT PLANS

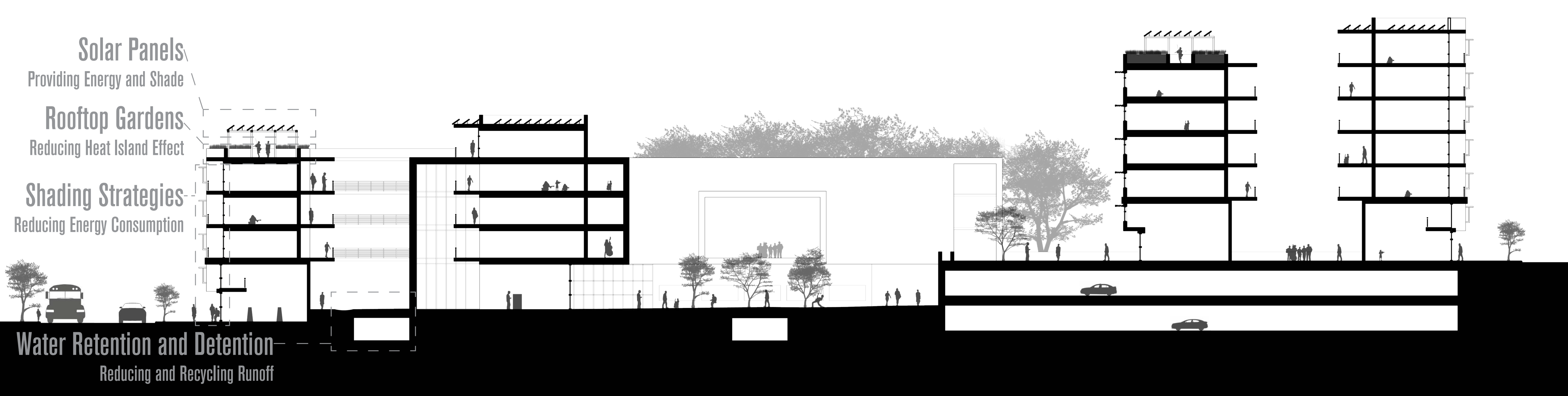
69 units  
1/16" = 1'



2ND FLOOR PLAN



GROUND FLOOR PLAN



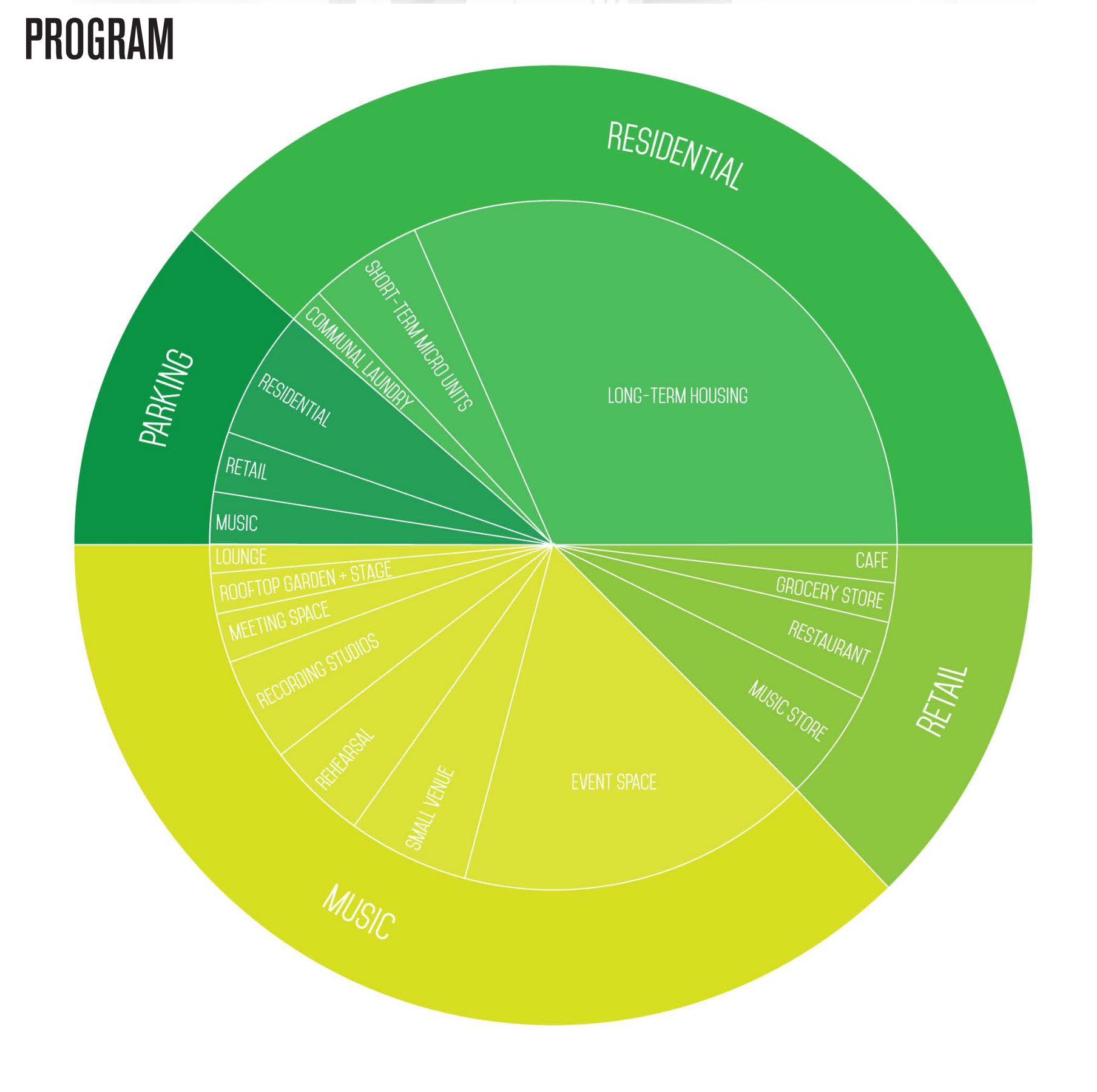
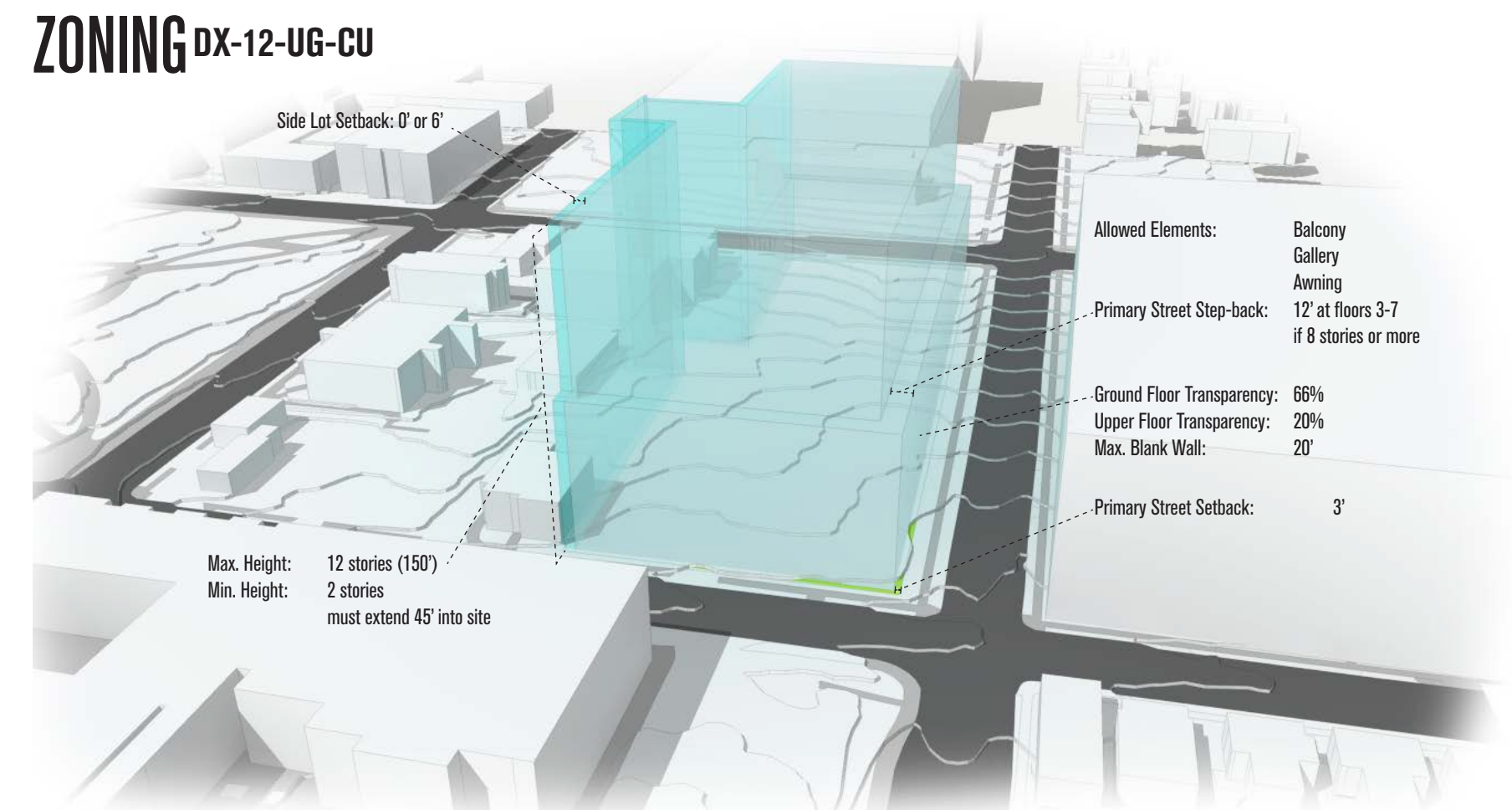
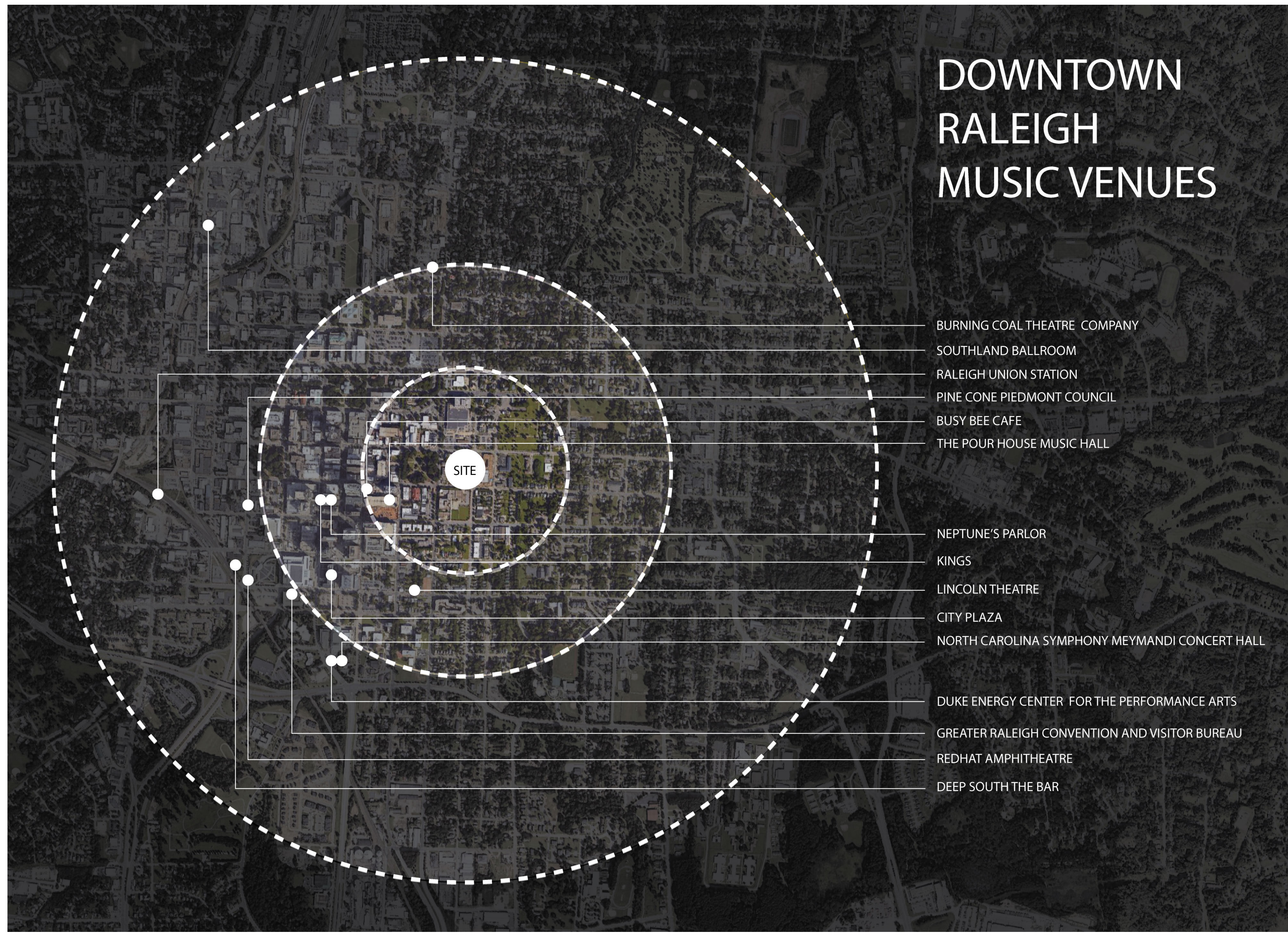
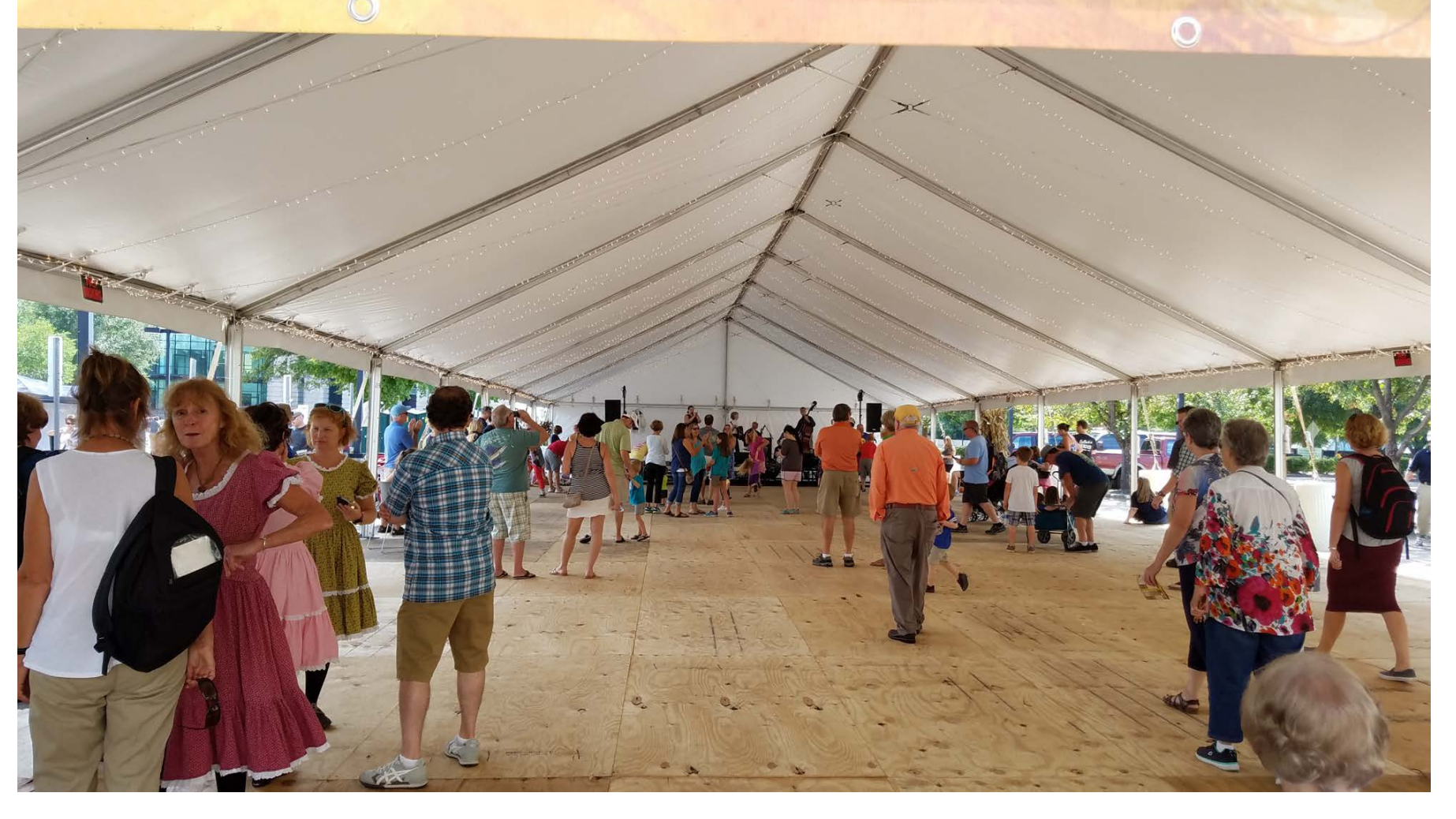
SITE SECTION  
3/32" = 1'

- Solar Panels  
Providing Energy and Shade
- Rooftop Gardens  
Reducing Heat Island Effect
- Shading Strategies  
Reducing Energy Consumption
- Water Retention and Detention  
Reducing and Recycling Runoff

# PINECONE : FOLK MUSIC IN DOWNTOWN RALEIGH



**THE CLIENT**  
 Pinecone is a Raleigh-based organization dedicated to the development of folk music in the area. North Carolina's music scene is shaped by a deep culture often tracing back to more traditional methods of composition. Pinecone seeks to foster these traditional styles alongside the modern vernacular. Also within their scope of interest is the realm of folk dance and traditional performing arts. Pinecone is most well-known for the Raleigh Wide Open Bluegrass Festival that overtakes Fayetteville Street every fall. In the meantime, they also host smaller events, such as Jam Sessions, in local venues and cafes.



## PINECONE HOUSE OF MUSIC

MATTHEW HIRSCH | NCSU | ARC 503 | TOM BARRIE | FALL 2016

