

## SUSTAINABILITY

LWPAC emphasizes live/ work spaces as sustainable. They argue that flexible space allows for people to work where they live and therefore eliminating a commute.

Porosity allows for natural light and ventilation. These features in combination with passive solar design and operator controls help regulate temperature and light with little energy use.

## CONNECTIONS

The project is located near the core of downtown Vancouver. The project has a direct connection to the street with a combination of storefronts and entrances at the street level. The units then share a central atrium space on the interior of the complex.

## OPEN SPACES

The main public open space in this project is the shared interior atrium. Then each unit is provided with a private exterior space.

## CONTEXT

The project is within the diverse city of Vancouver. An urban model that would be sensitive to surrounding buildings while providing flexible space that would appeal to a variety of cultures.

## HOME QUALITIES

10 stacked units (6 live/work studios, 4 penthouses) + Commercial retail units at the ground level.

Each unit offers a nice mix of sectional complexity and natural light. Each unit has a patio and each unit is two storeys with a double height space.

## ECONOMIC + SOCIAL DEVELOPMENT

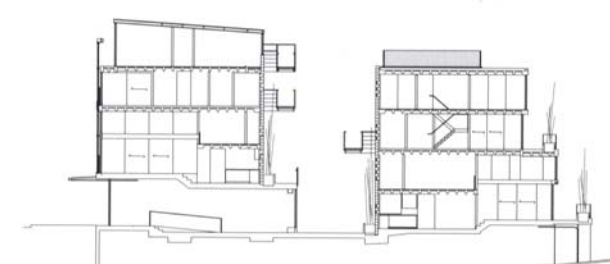
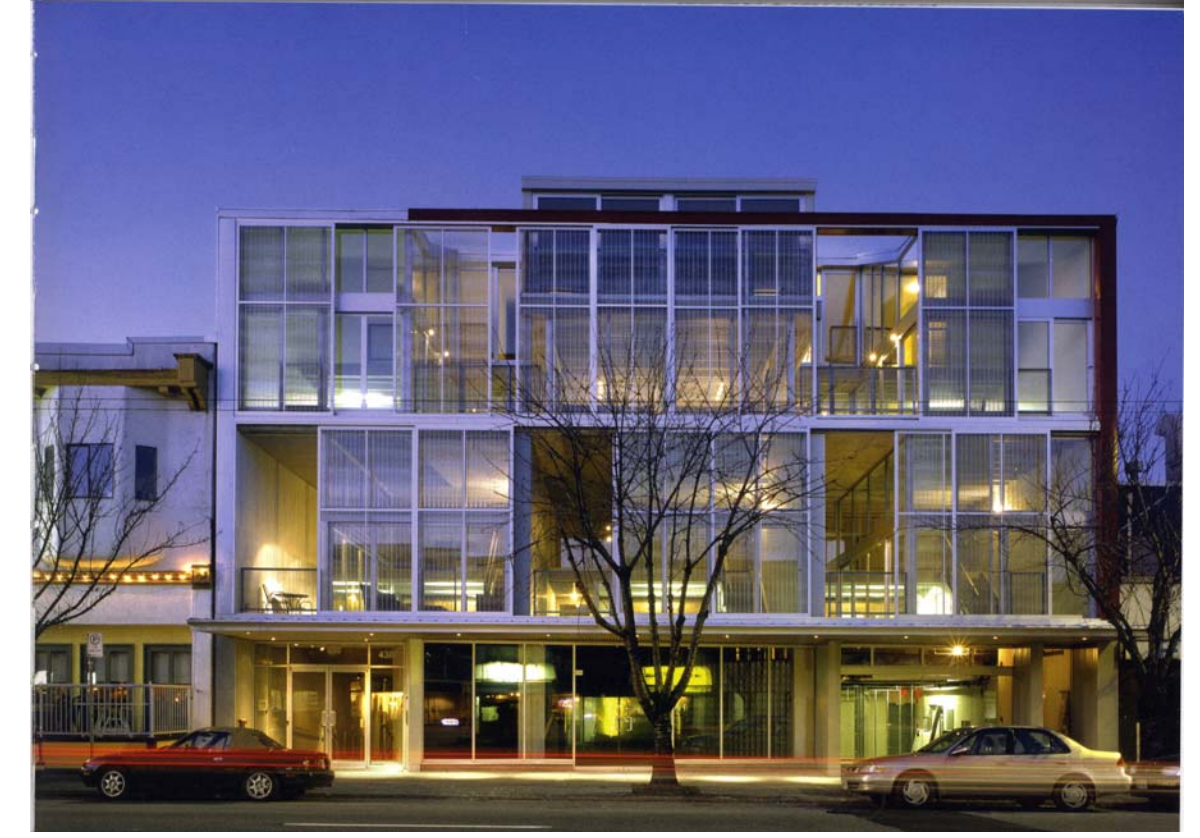
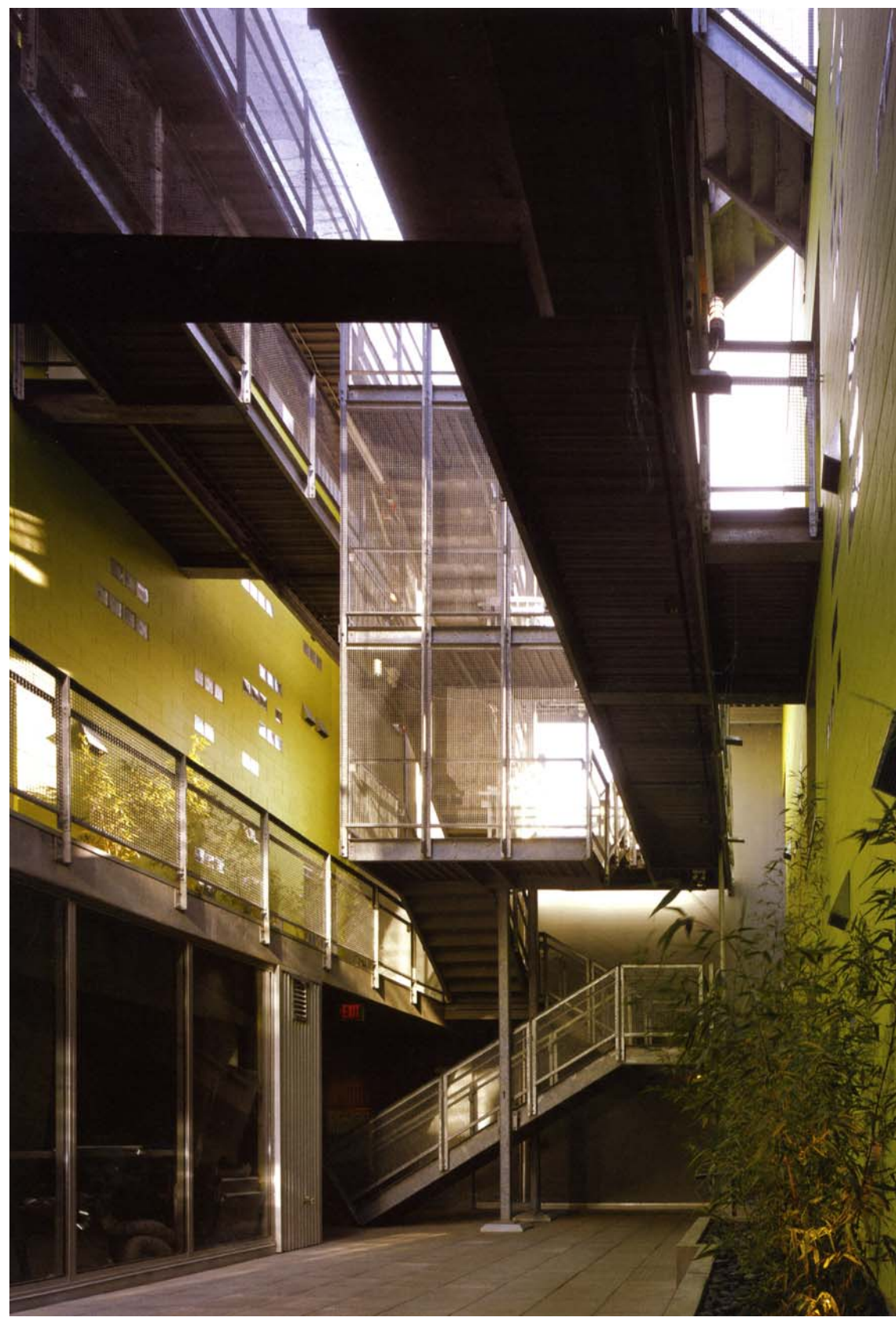
The inclusion of live work spaces as well as retail is the architects attempt to diversify the space.

# ROAR\_one Vancouver

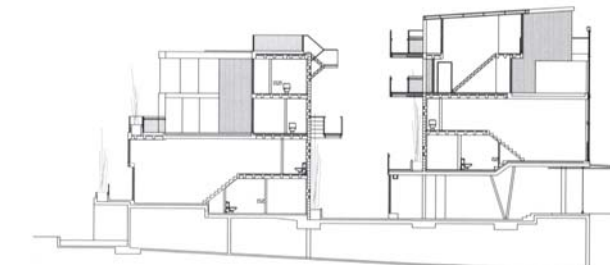
## LWPAC - Market Rate

Lang Wilson Pracie in Architecture and Culture

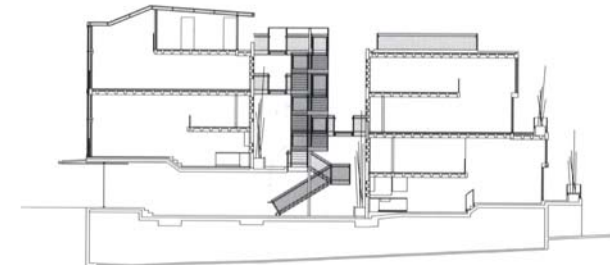
Completed: 2005



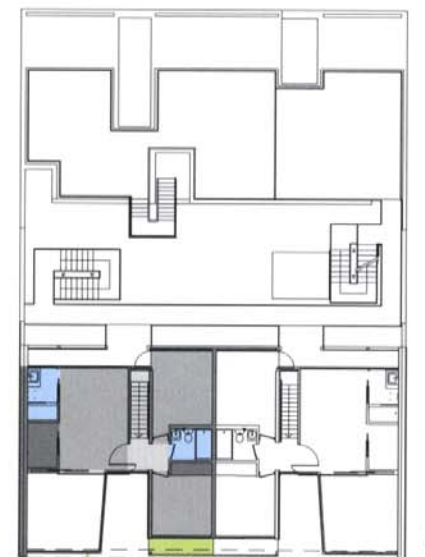
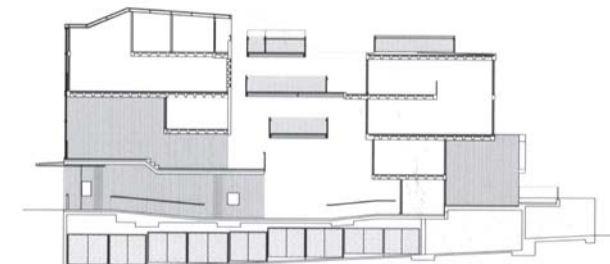
Sección A Section



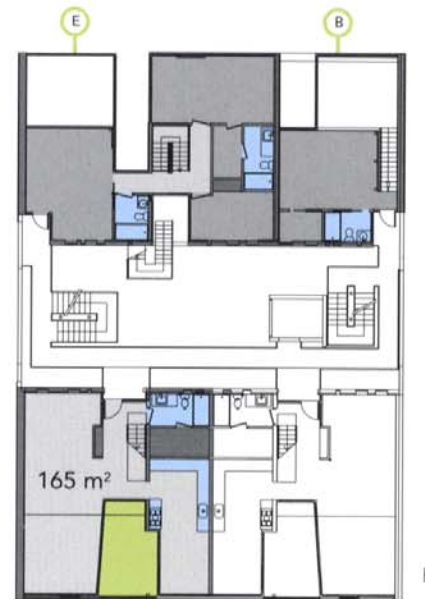
Sección B Section



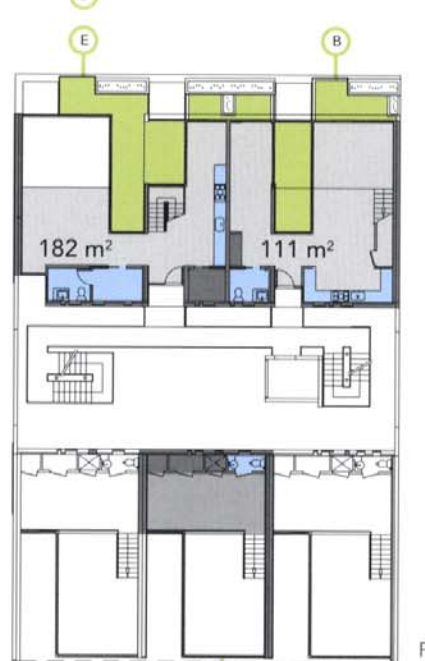
Sección C Section



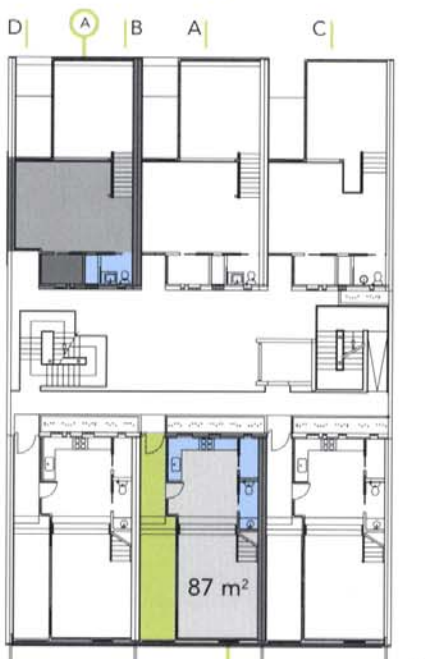
Planta cuarta Fourth floor plan



Planta tercera Third floor plan



Planta segunda Second floor plan



Planta primera First floor plan

